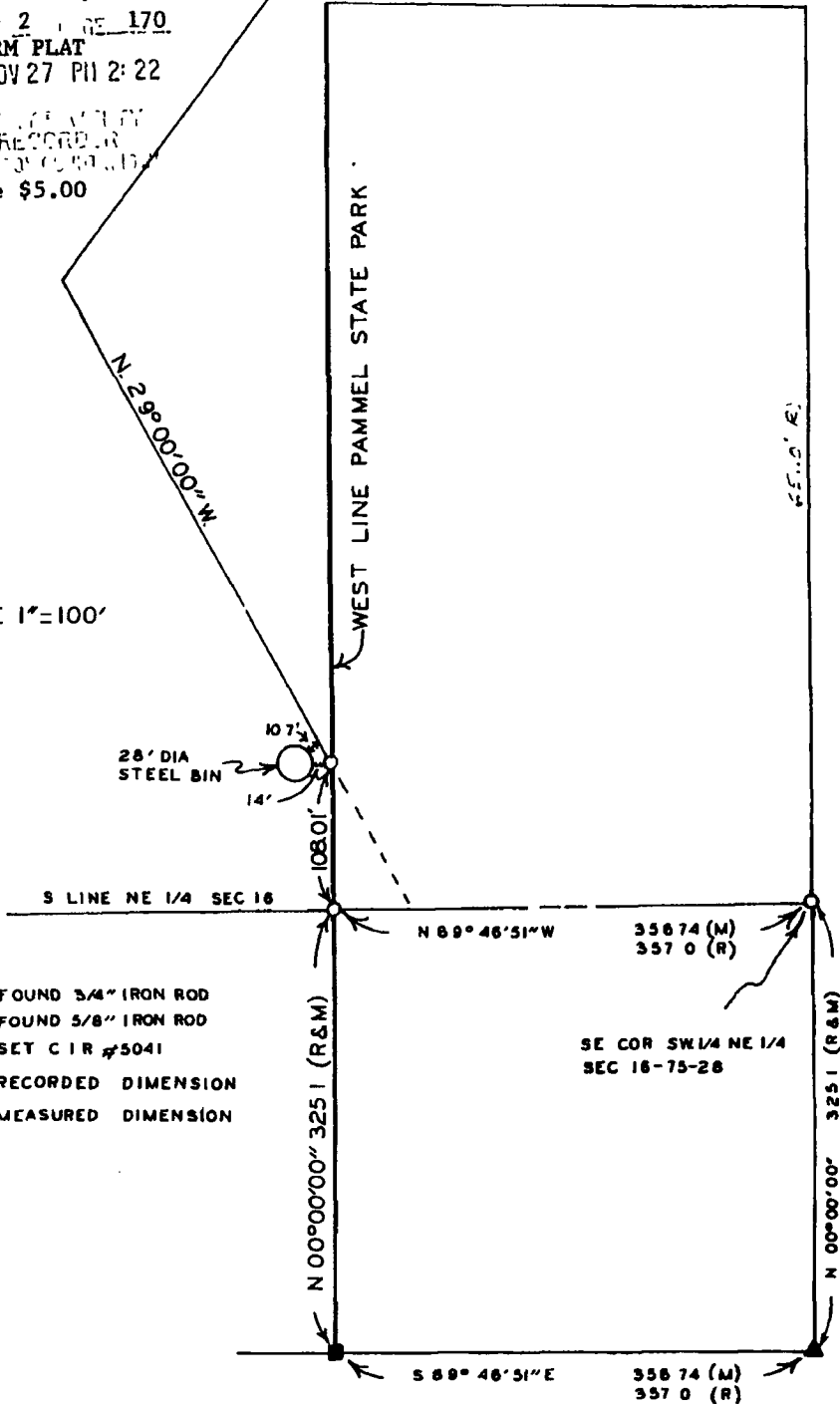
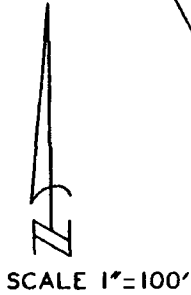


PLAT OF SURVEY FOR GENE DAUGHERTY
IN THE SW. 1/4 OF THE NE. 1/4 AND IN
THE NW. 1/4 OF THE SE. 1/4 OF SECTION
16, T75N, R28W OF THE 5 TH P.M.,
MADISON COUNTY, IOWA

Compared

FILED NO. **1116**
COPY 2 OF RE 170
FARM PLAT
63 NOV 27 PM 2:22

RECORDED
MADISON COUNTY IOWA
Fee \$5.00



- FOUND 3/4" IRON ROD
- ▲ FOUND 5/8" IRON ROD
- SET C I R #5041
- (R) RECORDED DIMENSION
- (M) MEASURED DIMENSION

I HEREBY CERTIFY THAT THIS PLAN, SPECIFICATION, PLAT, MAP, SURVEY OR REPORT WAS MADE BY ME OR UNDER MY DIRECT PERSONAL SUPERVISION AND THAT I AM A DULY REGISTERED PROFESSIONAL ENGINEER AND LAND SURVEYOR UNDER THE LAWS OF THE STATE OF IOWA

SIGNED *Charles T. Vance* DATE *3 April 1989*
Charles T. Vance, P.E. & L.S. Iowa Reg No 5041

VANCE & HOCHSTETLER, P.C.
CONSULTING ENGINEERS
71 JEFFERSON
WINTERSET, IOWA 50273