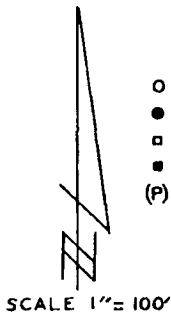
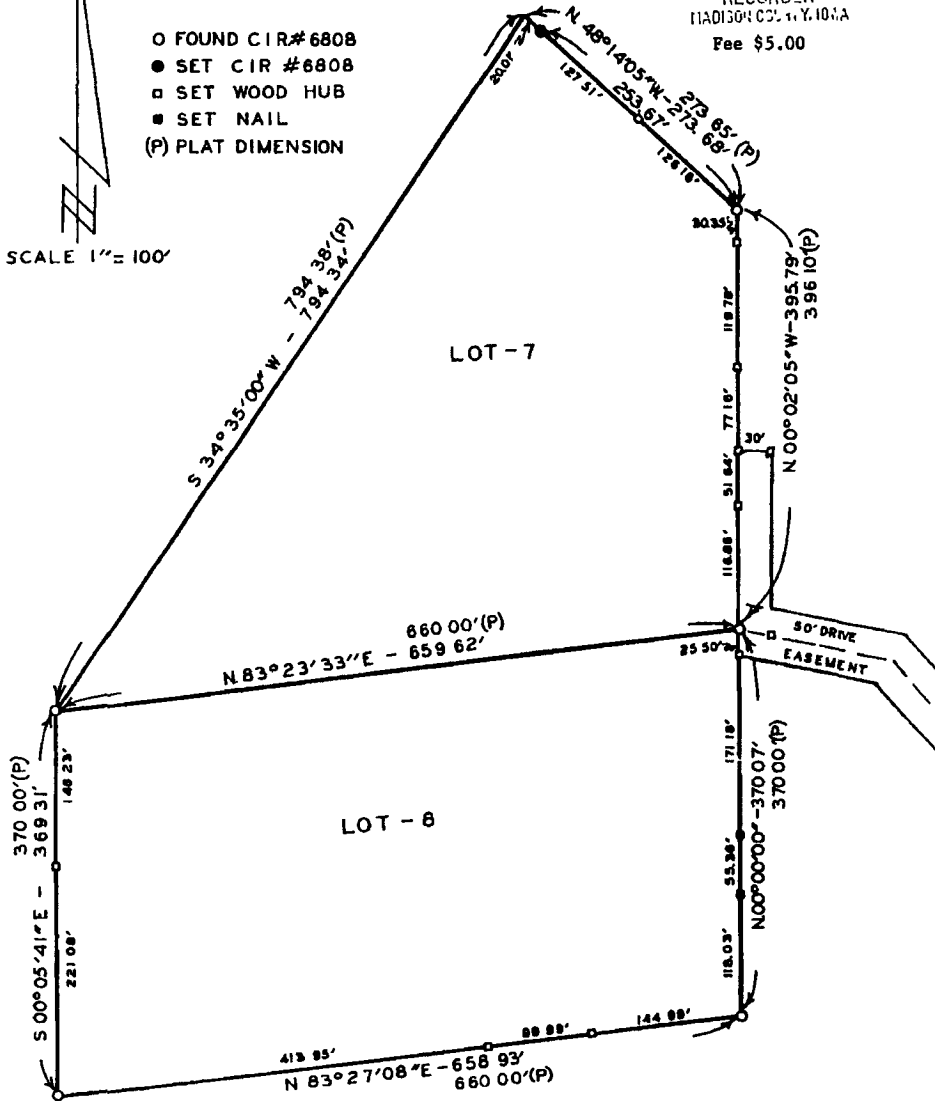


PLAT OF SURVEY FOR DAVID HERRIAM OF LOTS 7 AND 8,
LAKE VIEW RURAL ESTATES IN THE NE ¼ OF SECTION 28,
T77N, R26W OF THE 5TH P M, MADISON COUNTY, IOWA.

FILED NO 600
BOOK 2 PAGE 165
FARM PLAT
89 SEP 28 AM 10:20
JAMES E. WELTY
RECORDER
MADISON COUNTY, IOWA
Fee \$5.00



- FOUND CIR #6808
- SET CIR #6808
- SET WOOD HUB
- SET NAIL
- (P) PLAT DIMENSION



I HEREBY CERTIFY THAT THIS PLAN, SPECIFICATION, PLAT, MAP, SURVEY OR REPORT WAS MADE BY ME OR UNDER MY DIRECT PERSONAL SUPERVISION AND THAT I AM A FULLY REGISTERED PROFESSIONAL ENGINEER AND LAND SURVEYOR UNDER THE LAWS OF THE STATE OF IOWA.

SIGNED Charles Y. Vance DATE 15 Aug 1989
Charles Y. Vance, P.E. & L.S. Iowa Reg No 5041

VANCE & HOCHSTETLER, P.C.
CONSULTING ENGINEERS
71 JEFFERSON
WINTERSSET, IOWA 50273