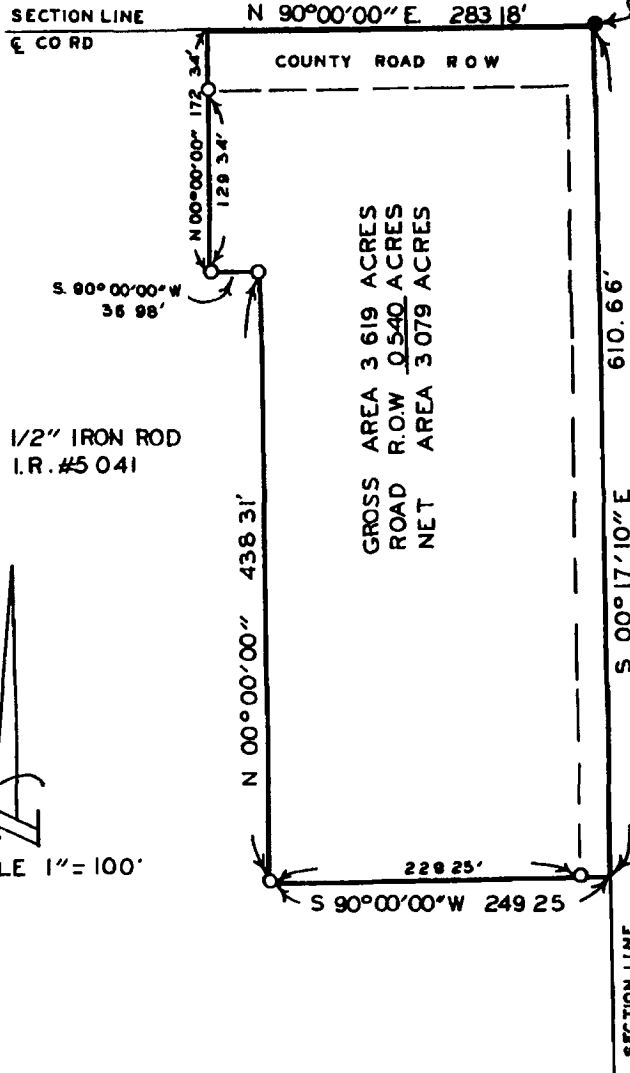


FILED NO. **595**
BOOK 2 PAGE 162
FARM PLAT
89 SEP 28 AM 10:11

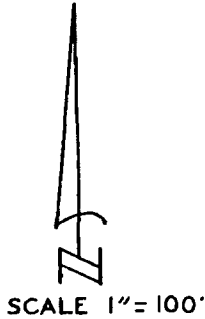
PLAT OF SURVEY FOR DAVID YOUNG
IN THE NE. 1/4 OF THE NE. 1/4 OF
SECTION 31, T76N, R28W OF THE
5TH P.M., MADISON COUNTY, IOWA.

MARY E. WELT,
RECORDER
MADISON COUNTY, IOWA
Fee \$5.00

NE. COR
SEC. 31-76-28



- FOUND 1/2" IRON ROD
- SET C.I.R. #5041



GROSS AREA 3 619 ACRES
ROAD R.O.W 0.540 ACRES
NET AREA 3 079 ACRES

DESCRIPTION:

A parcel of land located in the Northeast Quarter of the Northeast Quarter of Section 31, Township 76 North, Range 28 West of the 5th Principal Meridian, Madison County, Iowa, more particularly described as follows:

Beginning at the Northeast Corner of Section 31, T76N, R28W of the 5th P.M., Madison County, Iowa; thence, along the East line of the NE. 1/4 of said Section 31, South 00°17'10" East 610.66 feet; thence South 90°00'00" West 249.25 feet; thence North 00°00'00" 438.31 feet; thence South 90°00'00" West 36.98 feet; thence North 00°00'00" 172.34 feet to the North line of said NE. 1/4; thence, along said North line, North 90°00'00" East 283.18 feet to the Point of Beginning. Said parcel of land contains 3,619 acres, including 0.540 acres of county road right of way.

I HEREBY CERTIFY THAT THIS PLAN, SPECIFICATION, PLAT, MAP, SURVEY OR REPORT WAS MADE BY ME OR UNDER MY DIRECT PERSONAL SUPERVISION AND THAT I AM A FULLY REGISTERED PROFESSIONAL ENGINEER AND LAND SURVEYOR UNDER THE LAWS OF THE STATE OF IOWA

SIGNED *Charles T. Vance* DATE 3 Aug. 1999
Charles T. Vance, P.E. & L.S. Iowa Reg. No. 5041

VANCE & HOCHSTETLER, P.C
CONSULTING ENGINEERS
71 JEFFERSON
WINTERSSET, IOWA 50273