

PLAT OF SURVEY FOR TED GRAUER  
 IN THE NW.¼ OF THE NE.¼ OF SECTION  
 21, T77N, R26W OF THE 5 TH P.M.,  
 MADISON COUNTY, IOWA.

FILED NO. 358  
 BOOK 2 PAGE 161  
 FARM PLAT  
 89 AUG 25 PH 2: 29

□ FOUND GATE POST  
 ○ SET CIR #5041

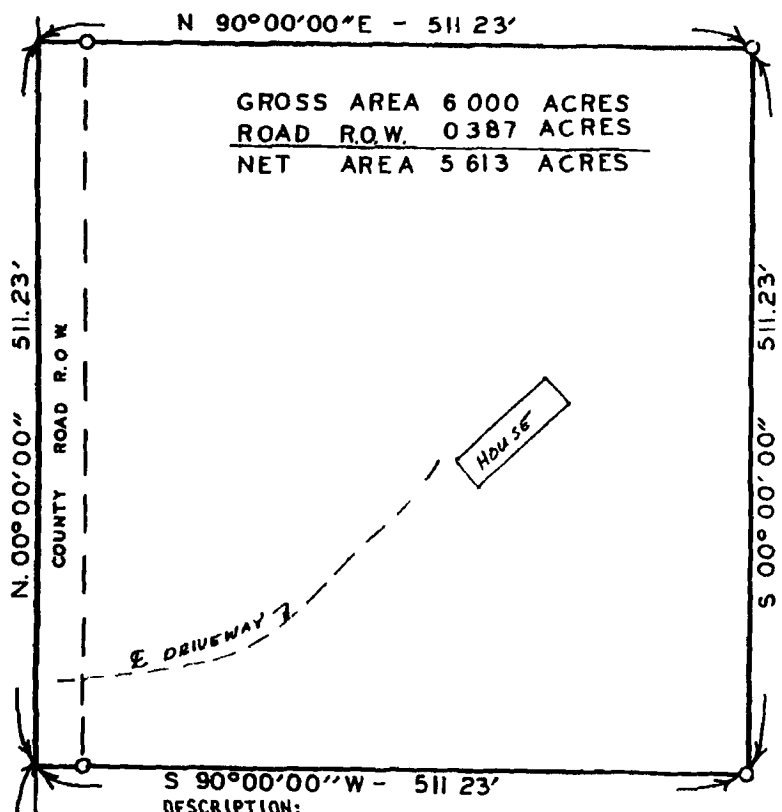
N

SCALE: 1"=100'

Compared

MARY E WELTY  
 RECORDER  
 MADISON COUNTY, IOWA  
 Fee \$5.00

ING  
 h/c  
 n/c



GROSS AREA 6 000 ACRES  
 ROAD R.O.W. 0 387 ACRES  
 NET AREA 5 613 ACRES

S 90°00'00" W - 511.23'  
 DESCRIPTION:

A parcel of land located in the Northwest Quarter of the North-east Quarter of Section 21, Township 77 North, Range 26 West of the Principal Meridian, Madison County, Iowa, more particularly described as follows:

Commencing at the Southwest Corner of the NW.¼ of the NE.¼ of Section 21, T77N, R26W of the 5th P.M., Madison County, Iowa; thence, along the West line of said NW.¼ of the NE.¼, North 00°00'00" 260.00 feet to the Point of Beginning; Thence, continuing along said West line, North 00°00'00" 511.23 feet; thence North 90°00'00" East 511.23 feet; thence South 00°00'00" 511.23 feet; thence South 90°00'00" West 511.23 feet to the Point of Beginning. Said parcel of land contains 6.000 acres including 0.387 acres of county road right of way.

SW COR. NW 1/4 NE. 1/4  
 SEC. 21-77-26

I HEREBY CERTIFY THAT THIS PLAN, SPECIFICATION, PLAT, MAP, SURVEY OR REPORT WAS MADE BY ME OR UNDER MY DIRECT PERSONAL SUPERVISION AND THAT I AM A DULY REGISTERED PROFESSIONAL ENGINEER AND LAND SURVEYOR UNDER THE LAWS OF THE STATE OF IOWA

SIGNED Charles T. Vance DATE 15 Aug 1989  
 Charles T. Vance, P.E. & L.S. Iowa Reg No 5041

VANCE & HOCHSTETLER, P.C.  
 CONSULTING ENGINEERS  
 71 JEFFERSON  
 WINTERSET, IOWA 50273