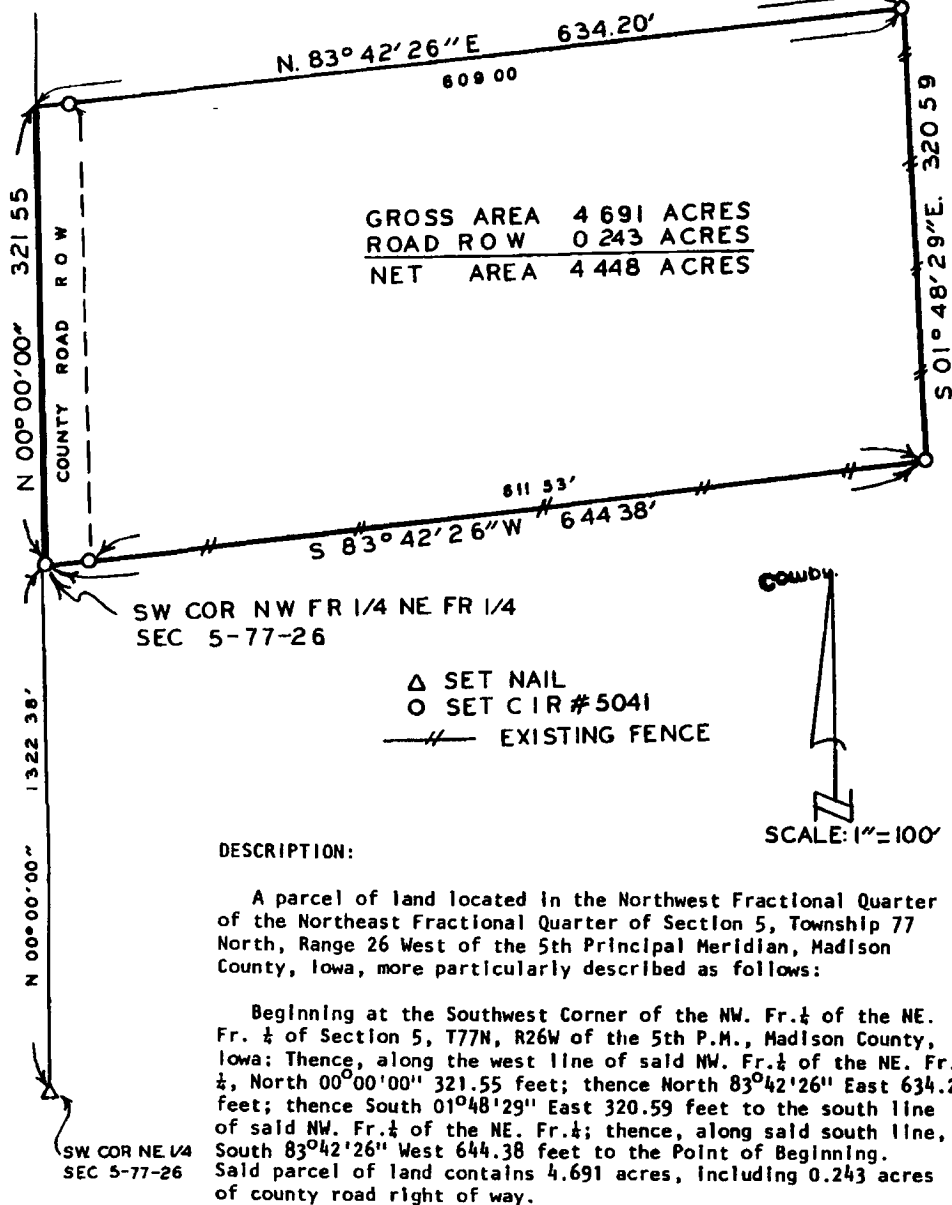


PLAT OF SURVEY FOR R.E. WEIDNER  
IN THE NW. FR.  $\frac{1}{4}$  OF THE NE. FR.  $\frac{1}{4}$   
OF SECTION 5, T77N, R26W OF THE  
5TH P.M., MADISON COUNTY, IOWA.

FILED NO. **324**  
BOOK **2** PAGE **160**  
FARM PLAT  
89 AUG 22 AM 10:48

Comptroller

MARY E WELTY  
RECORDER  
MADISON COUNTY, IOWA  
Fee \$5.00



I HEREBY CERTIFY THAT THIS PLAN, SPECIFICATION, PLAT, MAP, SURVEY OR REPORT WAS MADE BY ME OR UNDER MY DIRECT PERSONAL SUPERVISION AND THAT I AM A DULY REGISTERED PROFESSIONAL ENGINEER AND LAND SURVEYOR UNDER THE LAWS OF THE STATE OF IOWA

SIGNED *Charles T. Vance* DATE *11 Aug. 1989*  
Charles T. Vance, P.E. & L.S. Iowa Reg. No. 5041

VANCE & HOCHSTETLER, P.C.  
CONSULTING ENGINEERS  
71 JEFFERSON  
WINTERSET, IOWA 50273