

FARM PLAT 2

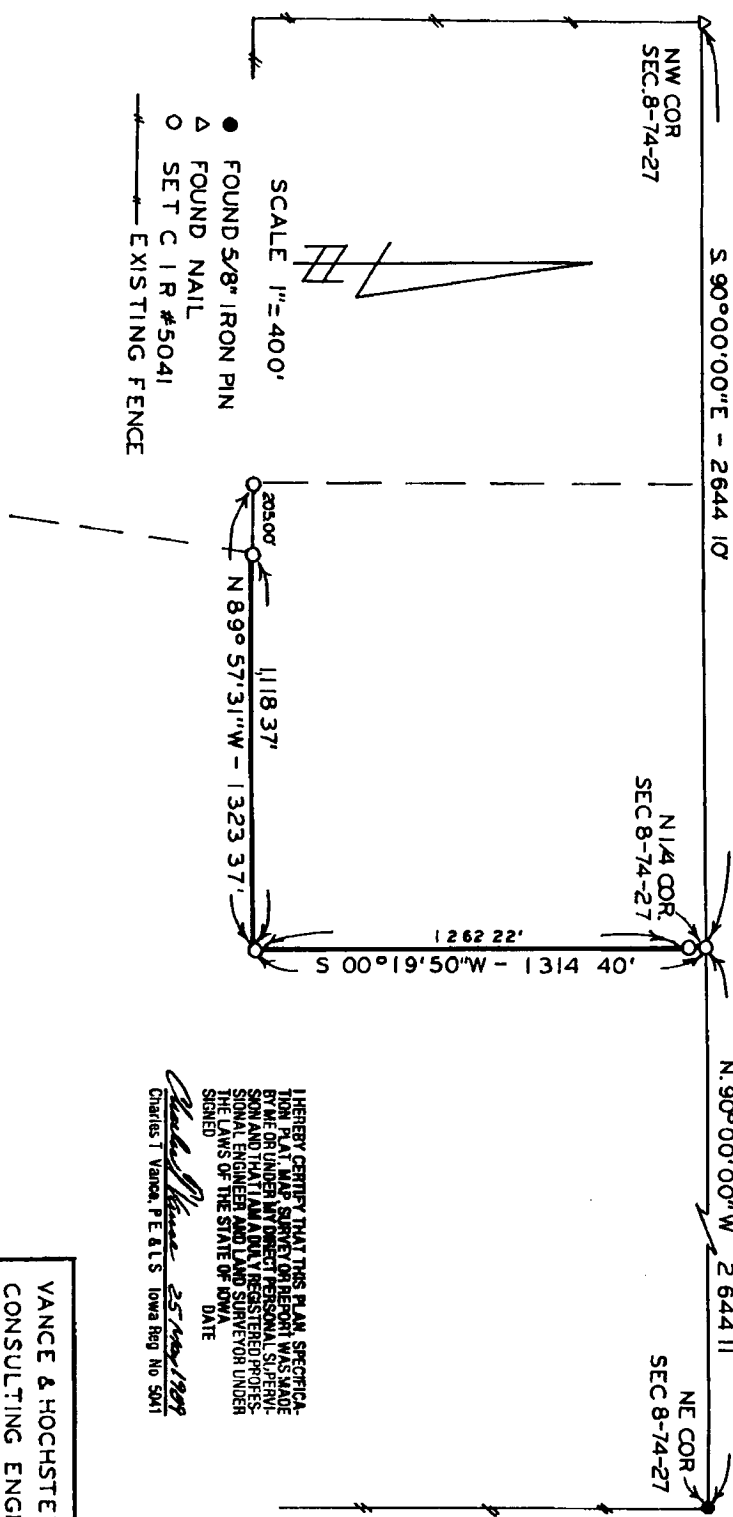
PLAT OF SURVEY FOR HARRISON VOWELL OF THE WEST LINE OF THE NW. 1/4 OF THE NE. 1/4, AND THE NORTH LINE OF THE SE. 1/4 OF THE NW. 1/4 OF SECTION 8, T74N, R27W OF THE 5TH P.M., MADISON COUNTY, IOWA.

COMPUTER



FILED NO. 79
BOOK 2 PAGE 156
FARM PLAT
89 JUL 17 PM 3:16
MARY E WELTY
RECORDER
MADISON COUNTY, IOWA
Fee \$5.00

NO. 1
REV. 1
PAGE 1



- FOUND 5/8" IRON PIN
- △ FOUND NAIL
- SET CIR #5041
- EXISTING FENCE

SCALE 1" = 400'

I HEREBY CERTIFY THAT THIS PLAN SPECIFICALLY
 SHOWS THE TRUE AND CORRECT LOCATION OF THE
 CORNERS AND THAT I AM A duly REGISTERED PROFESSIONAL
 SURVEYOR AND THAT I AM AN INDEPENDENT PROFESSIONAL
 ENGINEER AND LAND SURVEYOR UNDER
 THE LAWS OF THE STATE OF IOWA
 SIGNED _____ DATE _____

Charles J. Vance 25 May 1989
 Charles J. Vance, P.E. & L.S. Iowa Reg. No. 5041

VANCE & HOCHSTETLER, P.C
 CONSULTING ENGINEERS
 71 JEFFERSON
 WINTERSET, IOWA 50273