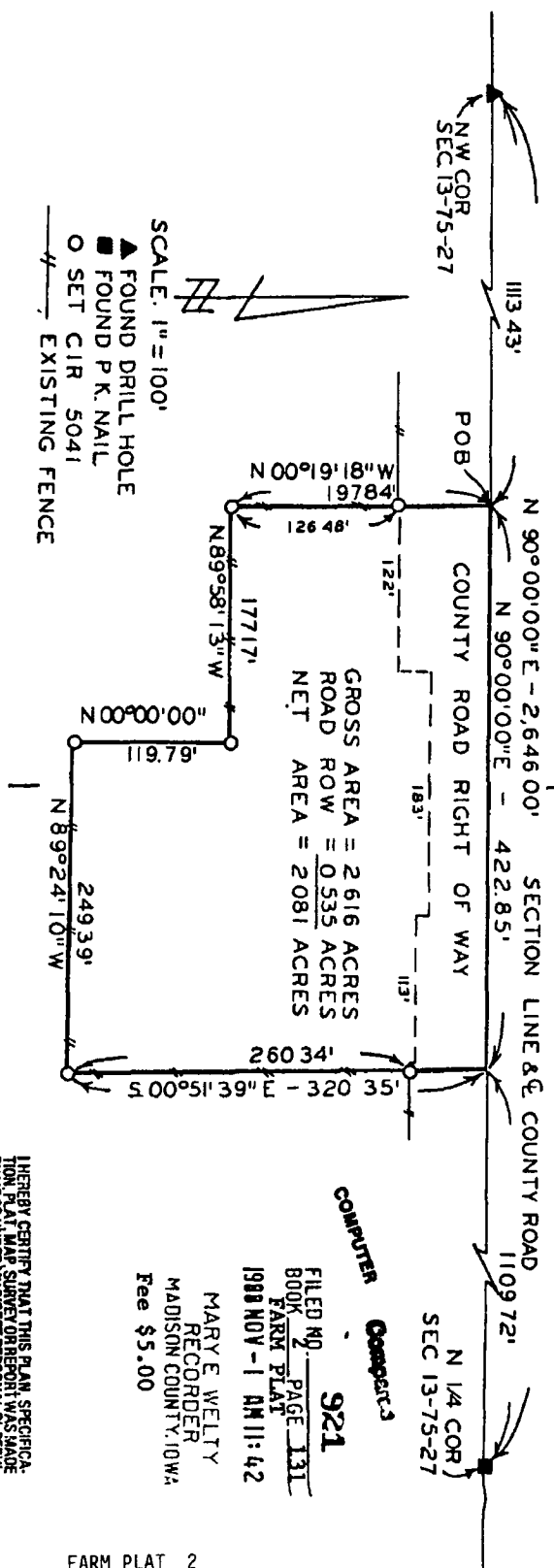






82-157-131

PLAT OF SURVEY MADE FOR PAT CORREAN IN THE N. 1/4 OF THE NW. 1/4 OF SECTION 13, T75N, R27W OF THE 5TH P.M., MADISON COUNTY, IOWA.



GROSS AREA = 2 616 ACRES  
ROAD ROW = 0 535 ACRES  
NET AREA = 2 081 ACRES

SCALE: 1" = 100'  
▲ FOUND DRILL HOLE  
■ FOUND P.K. NAIL  
○ SET CIR 5041  
--- EXISTING FENCE

DESCRIPTION:

A tract of land in the North Half of the Northwest Quarter of Section 13, Township 75 North, Range 27 West of the 5th Principal Meridian, Madison County, Iowa, more particularly described as follows:

Commencing at the Northwest Corner of Section 13, T75N, R27W of the 5th P.M., Madison County, Iowa; thence North 90°00'00" East 1,113.43 feet, along the North line of the NW 1/4 of said Section 13, to the point of beginning. Thence continuing along said North line, North 90°00'00" East 422.85 feet; thence South 00°51'39" East 320.35 feet; thence North 89°24'10" West 249.39 feet; thence North 00°00'00" 119.79 feet; thence North 89°58'13" West 177.17 feet; thence North 00°19'18" West 197.84 feet to the point of beginning. Said tract of land contains 2.616 Acres including 0.535 Acres of County Road Right of Way.

COMPUTER **Computer's**  
921

FILED NO. 2 PAGE 131  
BOOK FARM PLAT  
1988 NOV - 1 AM 11:42

MARYE WELTY  
RECORDER  
MADISON COUNTY, IOWA  
Fee \$5.00

I HEREBY CERTIFY THAT THIS PLAN SPECIFICALLY DESCRIBED HEREIN WAS MADE BY ME OR UNDER MY DIRECT PERSONAL SUPERVISION AND THAT I AM A DULY REGISTERED PROFESSIONAL ENGINEER AND LAND SURVEYOR UNDER THE LAWS OF THE STATE OF IOWA.  
DATE  
SIGNED

*Charles T Vance*  
Charles T Vance, P.E. & L.S., Iowa Reg. No. 5041

VANCE & HOCHSTETLER, P.C.  
CONSULTING ENGINEERS  
71 JEFFERSON  
WINTERSET, IOWA 50273