

Reduced

PLAT OF SURVEY FOR DARRELL LUKE IN THE
S. 3 OF THE SW. 1/4 AC. 1/2 OF SECTION 6, T74N,
R28W OF THE 5th P.M., MADISON COUNTY, IOWA.

COMPUTER

FILED NO. 111
BOOK PAGE 116
Part of Plat
1988 JUL 12 PM 4:03

MARY E. WELTY
RECORDER
4401 SWIN COUNTY IOWA
Fee \$5.00

A = 20°18'43"
P = 262.01'
L.C. = 13.86'
N. 70°40'25 1/2" W

N 80°49'50"W
13.86'

L = 206.37'

S. 1/4 COR
SEC. 6-74-28

I HEREBY CERTIFY THAT THIS PLAT, SPECIFICA
TION PLAT MAP SURVEY AND REPORT WAS MADE
BY ME OR UNDER MY CLOSE PERSONAL SUPERVISION
AND THAT I AM A LICENSED PROFESSIONAL
SURVEYOR ENGINEER AND LAND SURVEYOR UNDER
THE LAWS OF THE STATE OF IOWA
DATE
Mary E. Welty 30 June 1988
District 1, Vance, P.E. & L.S., Iowa Reg. No. 5041

VANCE & HOCHSTETLER, P.C.
CONSULTING ENGINEERS
71 JEFFERSON
WINTERSET, IOWA 50273

A = 73°22'56"
P = 318.31'
L.C. = 15.50'
S. 62°47'25" W

L = 407.68'

GROSS AREA = 28659 ACRES
ROAD ROW = 2778 ACRES
NET AREA = 25880 ACRES

SECTION LINE 2
S. 89°56'19" E - 2,418.91'

A = 90°25'56"
P = 195.91'
L.C. = 115.91'
S. 41°21'2" W

L = 1907'

SCALE 1" = 200'
● FOUND IRON PIN
○ SET C.I.R. #5041

A = 48°25'53"
P = 325.00'
L.C. = 287.47'
S. 60°54'57 1/2" W

S 00°04'19" W
52.78'

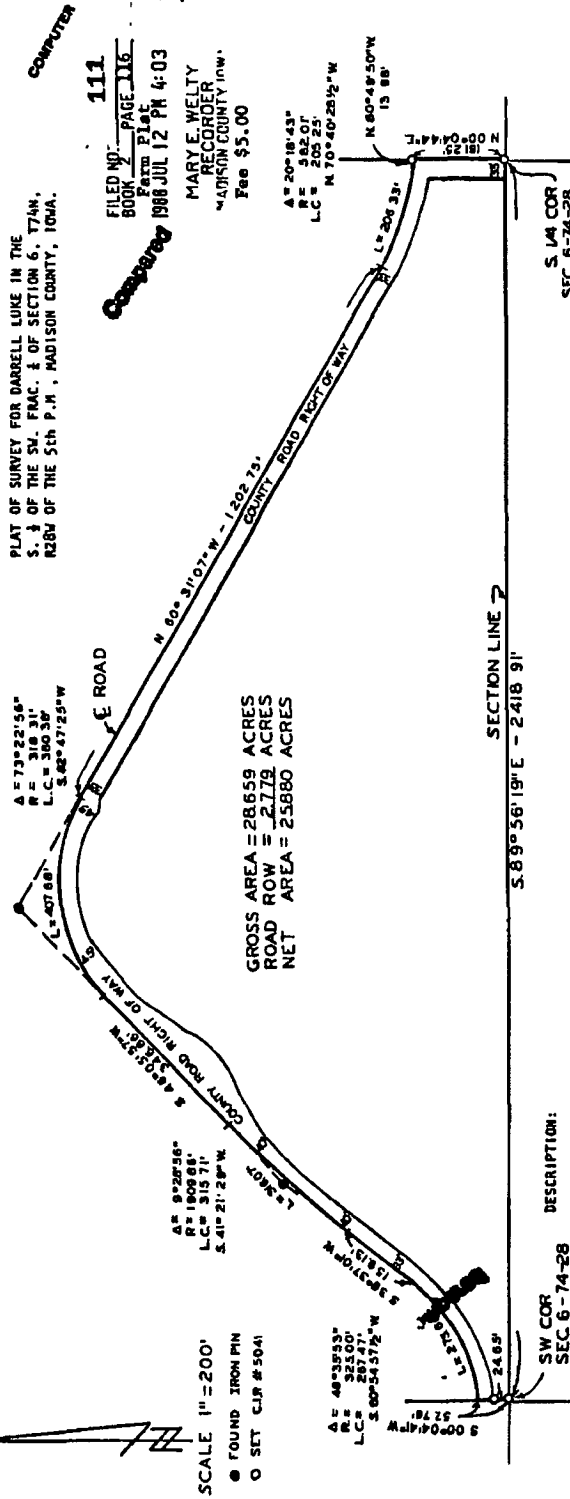
SW COR
SEC. 6-74-28

DESCRIPTION:

A tract of land in the South Half of the Southwest Fractional Quarter of Section 6, Township 74 North, Range 28 West of the 5th Principal Meridian, Madison County, Iowa, more particularly described as follows:

Beginning at the Southwest Corner of the SW. 1/4 of Section 6, T74N, R28W of the 5th P.M., Madison County, Iowa; thence South 89°56'19" East 2,418.91 feet along the south line of said SW. 1/4 to the South Quarter Corner of said Section 6; thence North 00°04'19" East 181.25 feet along the east line of said SW. 1/4; thence North 80°49'50" West 13.86 feet; thence Northwesterly, concave Southwesterly, having a central angle of 20°18'43", a long chord bearing North 70°40'25 1/2" West 206.37 feet; thence Southwesterly, concave Southwesterly, having a central angle of 73°22'56", a long chord bearing North 62°47'25" West 407.68 feet; thence South 41°21'2" West 1,907 feet along a 318.31 foot radius curve, concave Southwesterly, having a central angle of 90°25'56", a long chord bearing North 90°25'56" West 195.91 feet; thence South 60°54'57 1/2" West 325.00 feet; thence South 60°54'57 1/2" West 287.47 feet; thence South 00°04'19" West 52.78 feet to the point of beginning. Said tract of land contains 28,659 Acres including 2,778 Acres of County Road Right of Way.

Reduced



PLAT OF SURVEY FOR DARRELL LUKE IN THE
S. 1/4 OF THE SW. FRAC. 1/4 OF SECTION 6, T74N,
R28W OF THE 5th P.M., MADISON COUNTY, IOWA.

FILED NO. 111
BOOK PAGE 216
Farm Plat
1988 JUL 12 PM 4:03
MARY E. WELTY
RECORDER
MADISON COUNTY IOWA
Fee \$5.00

GROSS AREA = 28,659 ACRES
ROAD ROW = 2,713 ACRES
NET AREA = 25,946 ACRES

SCALE 1" = 200'
● FOUND IRON PIN
○ SET C.I.R. # 5041

DESCRIPTION:
A tract of land in the South Half of the Southwest Fractional Quarter of Section 6, Township 74
North, Range 28 West of the 5th Principal Meridian, Madison County, Iowa, more particularly
described as follows:

Beginning at the Southwest Corner of the SW. frac. 1/4 of Section 6, T74N, R28W of the 5th P.M.,
Madison County, Iowa; thence South 89°56'19" East 2,418.91 feet, along the south line of said
SW. frac. 1/4, to the South Quarter Corner of said Section 6; thence North 00°04'44" East 181.25
feet along the east line of said SW. frac. 1/4; thence North 89°49'50" West 13.98 feet; thence
Northwesterly 206.33 feet along a 582.01 foot Radius curve, concave Northwesterly, having a central
angle of 20°18'43" and a long chord bearing North 70°40'28.3" West 205.25 feet; thence North 60°
31'07" West 1,202.75 feet; thence Westerly 407.68 feet along a 318.31 foot radius curve, concave
Southerly, having a central angle of 75°22'56" and a long chord bearing South 82°47'95" West 380.38
feet; thence South 46°05'57" West 346.86 feet; thence Southeasterly, having a central angle of 9°28'56" and a long chord
bearing South 41°21'29" West 315.71 feet; thence South 36°37'01" West 159.13 feet; thence South-
westerly 375.66 feet along a 325.00 foot radius curve, concave Northwesterly, having a central
angle of 48°51'53" and a long chord bearing South 60°54'57.3" West 267.47 feet; thence South 00°
04'41" West 57.76 feet to the point of beginning. Said tract of land contains 28,659 Acres including
2,775 Acres of County Road Right of Way.

I HEREBY CERTIFY THAT THIS IS AN ACCURATE
REPRODUCTION OF THE ORIGINAL SURVEY MADE
BY ME OR UNDER MY DIRECT PERSONAL SUPERVISION
AND THAT I AM A duly LICENSED SURVEYOR
UNDER THE LAWS OF THE STATE OF IOWA
DATED
Mary E. Welty 30 June 1988
Madison County, Iowa, No. 5041

VANCE & HOCHSTETTLER, P.C.
CONSULTING ENGINEERS
71 JEFFERSON
WINTERSET, IOWA 50273