

PC

73

12 1/4 NW 1/4
- 174N-027W

STREET

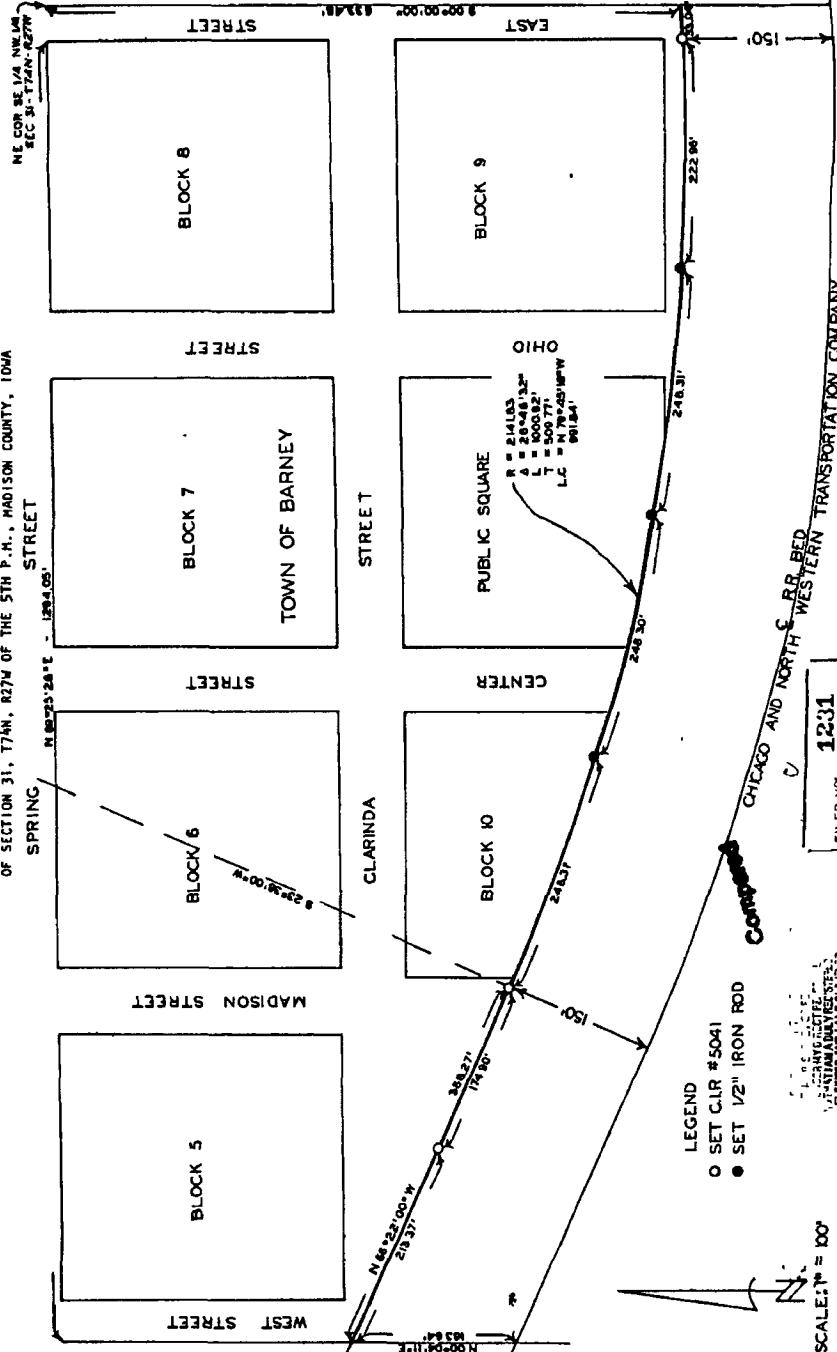
EAST

150'

150'

E & HOCHS
ULTING EI
ERSET, IC

PLAT OF SURVEY FOR JAMES V. QUINN OF THE NORTH LINE OF THE CHICAGO AND NORTH WESTERN TRANSPORTATION COMPANY RIGHT OF WAY IN THE SE. 1/4 OF THE NW. 1/4 OF SECTION 31, T74N, R27W OF THE 5TH P.M., MADISON COUNTY, IOWA



NE COR. SE 1/4 NW 1/4 SEC. 31, T74N, R27W

SPRING N 89° 23' 28" E 1294.05'

8.29' 00" W

N 68° 22' 00" W 219.37'

N 63° 04' 11" E 103.64'

150'

222.96'

248.31'

248.30'

248.37'

248.30'

248.31'

150'

150'

150'

150'

150'

150'

150'

150'

150'

150'

150'

150'

150'

150'

150'

150'

150'

150'

150'

150'

150'

150'

150'

150'

150'

150'

150'

150'

150'

150'

150'

150'

150'

150'

150'

150'

150'

150'

150'

150'

150'

150'

150'

150'

150'

150'

150'

150'

150'

150'

150'

150'

150'

150'

150'

150'

150'

150'

150'

150'

150'

150'

150'

150'

150'

150'

150'

150'

150'

150'

150'

150'

150'

150'

150'

150'

150'

150'

150'

150'

150'

150'

150'

150'

150'

150'

150'

150'

150'

150'

150'

150'

150'

150'

150'

150'

150'

150'

150'

150'

150'

150'

150'

150'

150'

150'

150'

150'

150'

150'

150'

150'

150'

150'

150'

150'

150'

150'

150'

150'

150'

150'

150'

150'

150'

150'

150'

150'

150'

150'

150'

150'

150'

150'

150'

150'

150'

150'

150'

150'

150'

150'

150'

150'

150'

150'

150'

150'

150'

150'

150'

150'

150'

150'

150'

150'

150'

150'

150'

150'

150'

150'

150'

150'

150'

150'

150'

150'

150'

150'

150'

150'

150'

150'

150'

150'

150'

150'

150'

150'

150'

150'

150'

150'

150'

150'

150'

150'

150'

150'

150'

150'

150'

150'

150'

150'

150'

150'

150'

150'

150'

150'

150'

150'

150'

150'

150'

150'

150'

150'

150'

150'

150'

150'

150'

150'

150'

150'

150'

150'

150'

150'

150'

150'

150'

150'

150'

150'

150'

150'

150'

150'

150'

150'

150'

150'

150'

150'

150'

150'

150'

150'

150'

150'

150'

150'

150'

150'

150'

150'

150'

150'

150'

150'

150'

150'

150'

150'

150'

150'

150'

150'

150'

150'

150'

150'

150'

150'

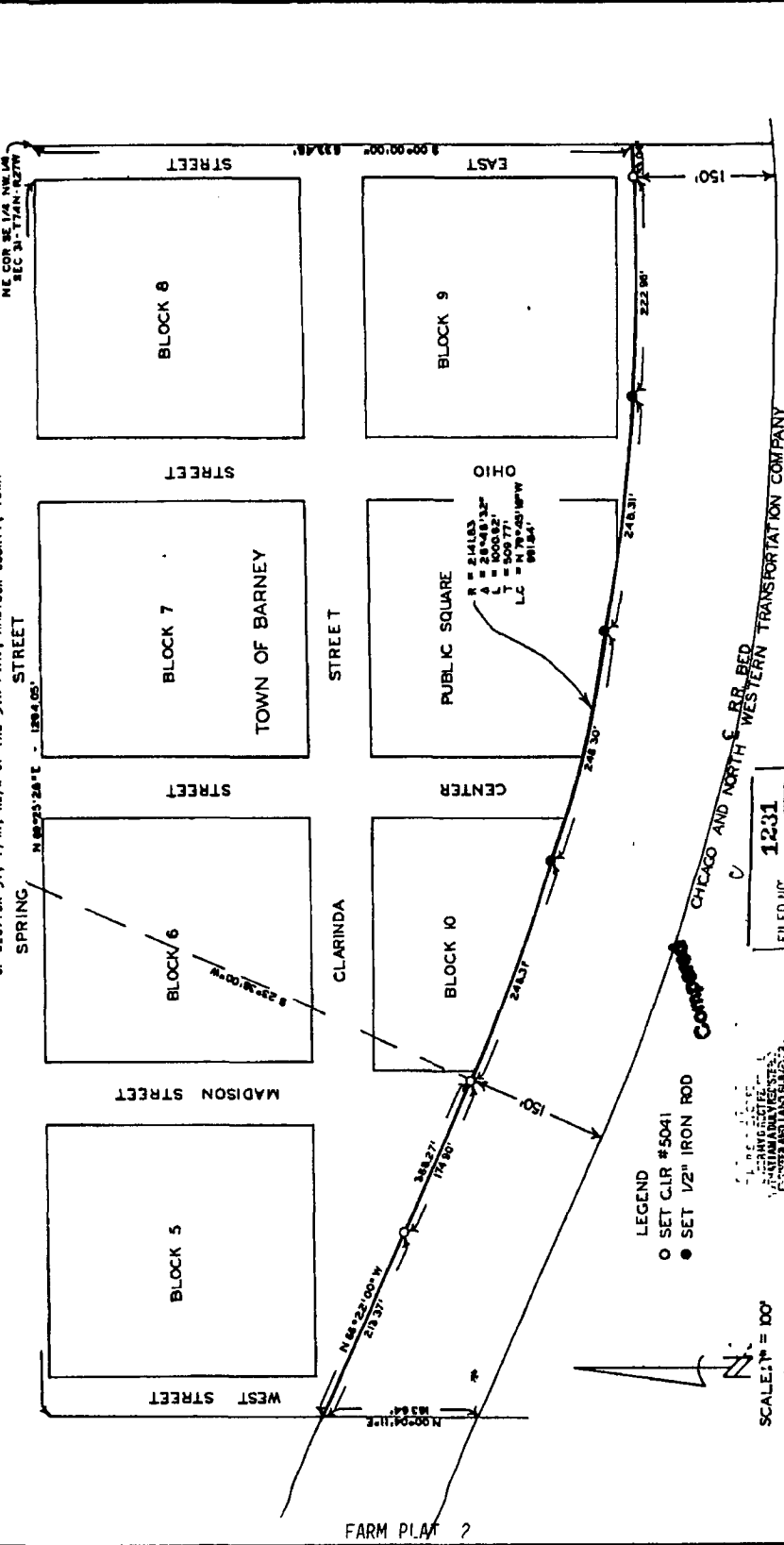
150'

150'

150'

PLAT OF SURVEY FOR JAMES V. QUINN OF THE NORTH LINE OF THE CHICAGO AND NORTH WESTERN TRANSPORTATION COMPANY RIGHT OF WAY IN THE SE. 1/4 OF THE NW. 1/4 OF SECTION 31, T74N, R27W OF THE 5TH P.M., MADISON COUNTY, IOWA

NE COR. SE 1/4 NW 1/4 SEC. 31 - T74N - R27W



VANCE & HOCHSTETTLER, PC
CONSULTING ENGINEERS
WINTERSET, IOWA 50273

FILED NO. 1231
PAGE 2 OF 91
FARM PLAT
1988 JUN 15 Ph 2-45
MARY E. WELTY
RECORDER
IOWA
Fee \$3.00

LEGEND
○ SET CLR #5041
● SET 1/2" IRON ROD

NOTED
IOWA REGISTERED SURVEYOR
NO. 1231
JAMES V. QUINN
OF THE STATE OF IOWA
22 Dec 1987

SCALE: 1" = 100'
N

MADE BY
VANCE & HOCHSTETTLER, PC

REDUCED

FARM PLAT 2