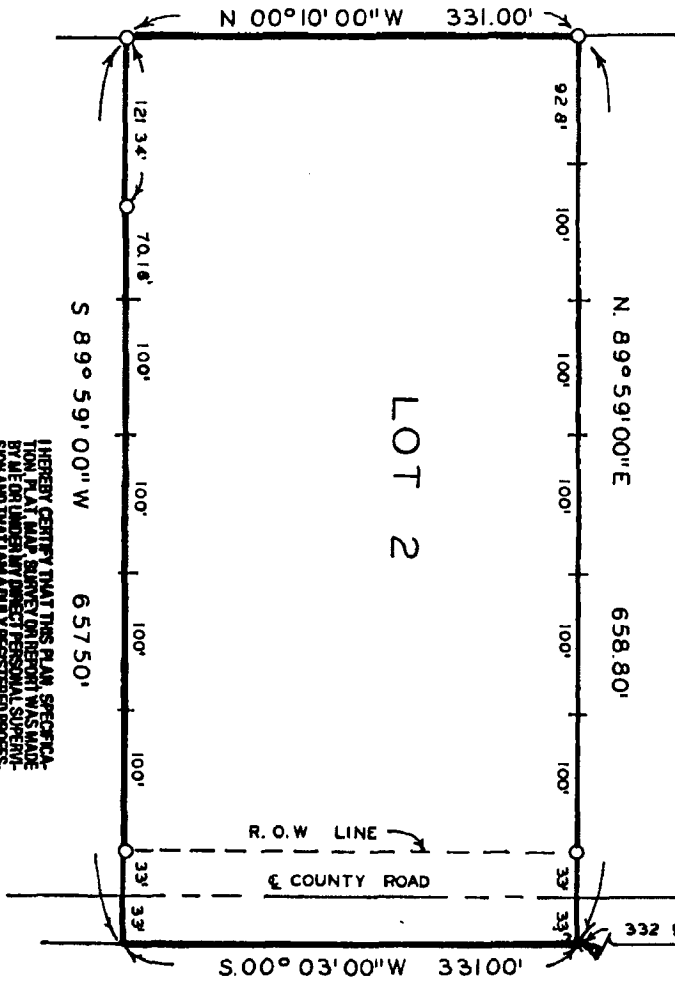
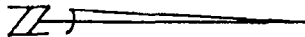


SCALE: 1" = 100'

■ FOUND SPIKE
 ○ SET C.I.R.#50-41
 + SET STEEL POST ON LINE



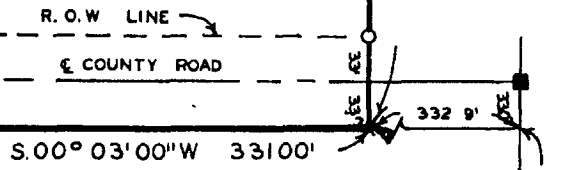
PLAT OF SURVEY FOR DALE HARRISON OF LOT 2 OF BERGLUND RURAL ESTATES SUB-DISTRICT IN THE NW 1/4 OF SECTION 32, T77N, R27W OF THE 5TH P.M., MADISON COUNTY, IOWA.

LOT 2

HEREBY CERTIFY THAT THIS PLAN SPECIFICALLY SHOWS THE CORNER PLACEMENT AND LOCATION OF THE BOUNDARIES OF THE LOT AS SHOWN ON THIS PLAN AND THAT THE SAME ARE IN ACCORDANCE WITH THE LAWS OF THE STATE OF IOWA.

DATE

Charles I. Vance 13 June 1988
 Charles I. Vance, P.E. & L.S. Iowa Reg. No. 5041

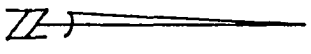


NE COR. W 1/2
 NE 1/4 NW 1/4
 SEC 32-77-27

VANCE & HOOFSTETLER, P.C.
 CONSULTING ENGINEERS
 71 JEFFERSON
 WINTERSSET, IOWA 50273

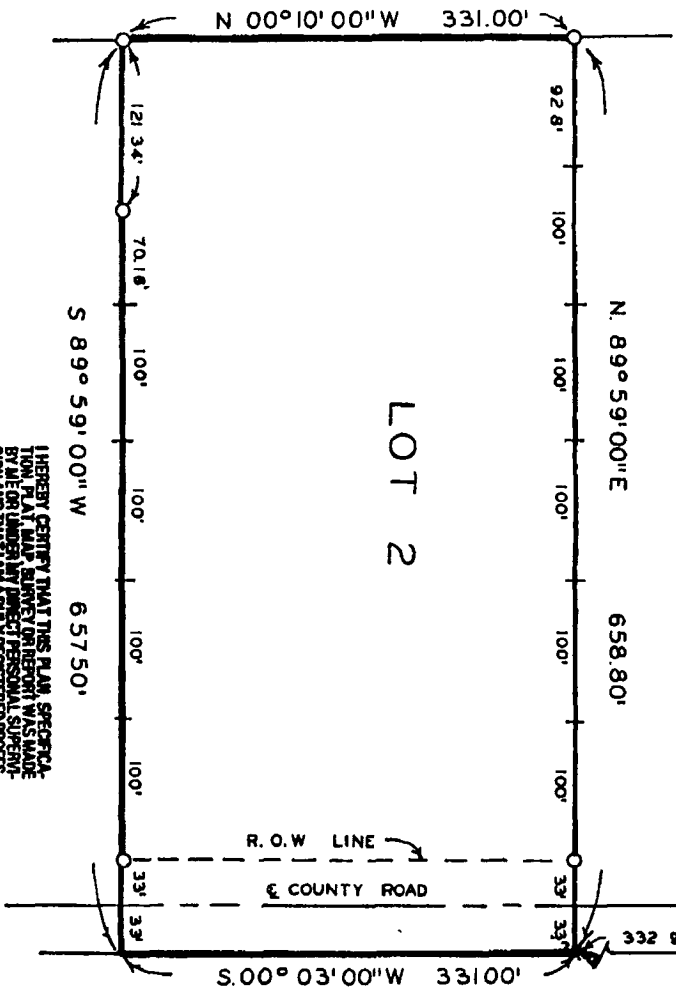
FILED NO. 109
 BOOK 2 PAGE 114
 Farm Plat
 1988 JUL 12 PM 4:01
 MARY E. WELTY
 RECORDER
 MADISON COUNTY IOWA
 Fee \$5.00

COMPUTER



SCALE: 1" = 100'

- FOUND SPIKE
- SET C.I.R.#5041
- SET STEEL POST ON LINE



PLAT OF SURVEY FOR DALE HARRISON
 OF LOT 2 OF BERGLUND RURAL ESTATES
 SUB-DISTRICT IN THE NW 1/4 OF SECTION
 32, T77N, R27W OF THE 5TH P.M.,
 MADISON COUNTY, IOWA.

LOT 2

THIRTY CENTY THAT THIS PLAN SPECIFICA-
 TIONS BEAT SAID SURVEY OR BEHOLD WAS MADE
 BY ME OR UNDER MY DIRECT PERSONAL SUPER-
 VISION AND THAT I AM A FULLY REGISTERED PROFFES-
 SIONAL ENGINEER AND LAND SURVEYOR UNDER
 THE LAWS OF THE STATE OF IOWA.
 SIGNED _____ DATE _____

Charles I. Vance 13 June 1988
 Charles I. Vance, P.E. & L.S., Iowa Reg. No. 5041

NE COR. W 1/2
 NE 1/4 NW 1/4
 SEC 32-77-27

COMPUTER

FILED NO. 109
 BOOK 2 PAGE 114
 1988 JUL 12 PM 4:01
 MARY E. WELTY
 RECORDER
 MADISON COUNTY IOWA
 Fee \$5.00

VANCE & HOCHSTETLER, P.C.
 CONSULTING ENGINEERS
 71 JEFFERSON
 WINTERSSET, IOWA 50273