



Document 2014 955

Book 2014 Page 955 Type 06 026 Pages 1  
Date 4/23/2014 Time 3:47 PM  
Rec Amt \$7.00

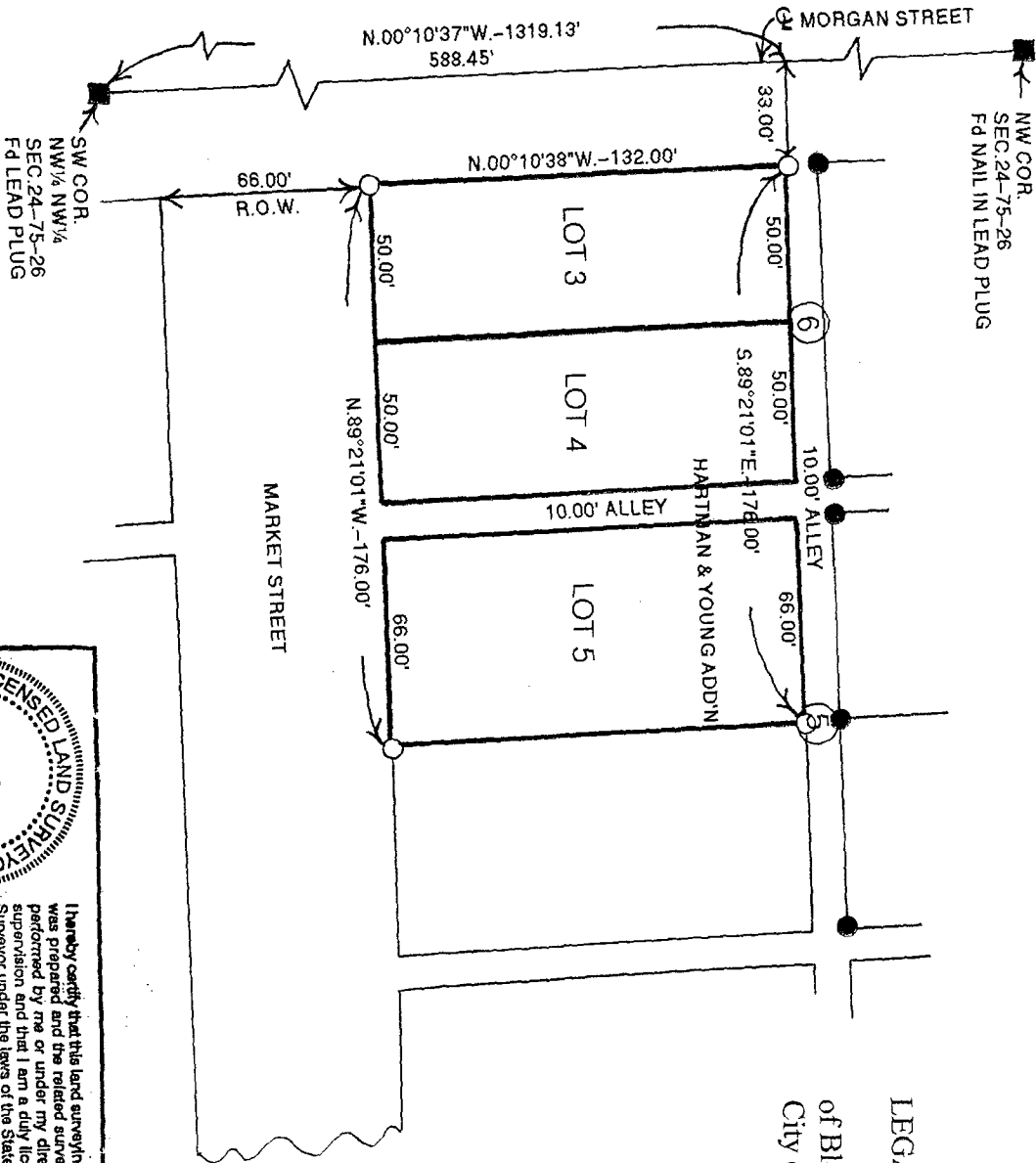
INDX  
ANNO  
SCAN  
CHEK

LISA SMITH, COUNTY RECORDER  
MADISON COUNTY IOWA

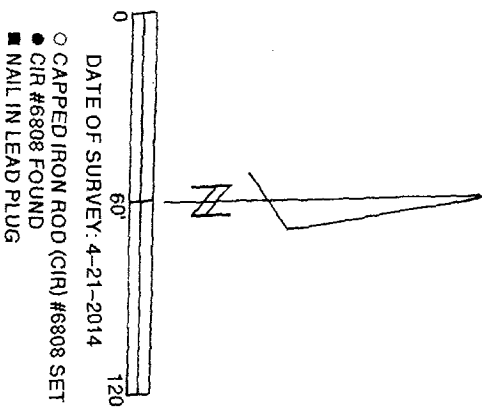
**VANCE & HOCHSTETLER, P.C. • CONSULTING ENGINEERS • WINTERSET, IOWA 50273**

1453 CHARLES T. VANCE • 110 WEST GREEN ST., WINTERSET, IOWA • (515) 462-3995  
JAMES M. HOCHSTETLER • 110 WEST GREEN ST., WINTERSET, IOWA • FAX: (515) 462-9845

PLAT OF SURVEY IN BLOCKS 5 & 6 OF HARTMAN & YOUNG ADDITION,  
CITY OF ST. CHARLES, MADISON COUNTY, IOWA  
OWNED BY DALE & JUDY MCCLURE.



LEGAL DESCRIPTION:  
Lots 3 and 4 of Block 6 and Lot 5  
of Block 5, Hartman & Young Addition,  
City of St. Charles, Madison County, Iowa.



**LICENSED LAND SURVEYOR**  
J. M. HOCHSTETLER  
#6808  
IOWA

I hereby certify that this land surveying document was prepared and the related survey work was performed by me or under my direct personal supervision and that I am a duly licensed Land Surveyor under the laws of the State of Iowa.

*J.M. Hochstetler*  
J.M. HOCHSTETLER  
License number 6808 Date 4/23/14  
My license renewal date is December 31, 2015  
Pages or sheets covered by this seal: 1