



Document 2014 747

Book 2014 Page 747 Type 06 026 Pages 1

Date 4/02/2014 Time 3:23 PM

Rec Amt \$7.00

INDEX ✓

ANNO

SCAN

LISA SMITH, COUNTY RECORDER
MADISON COUNTY IOWA

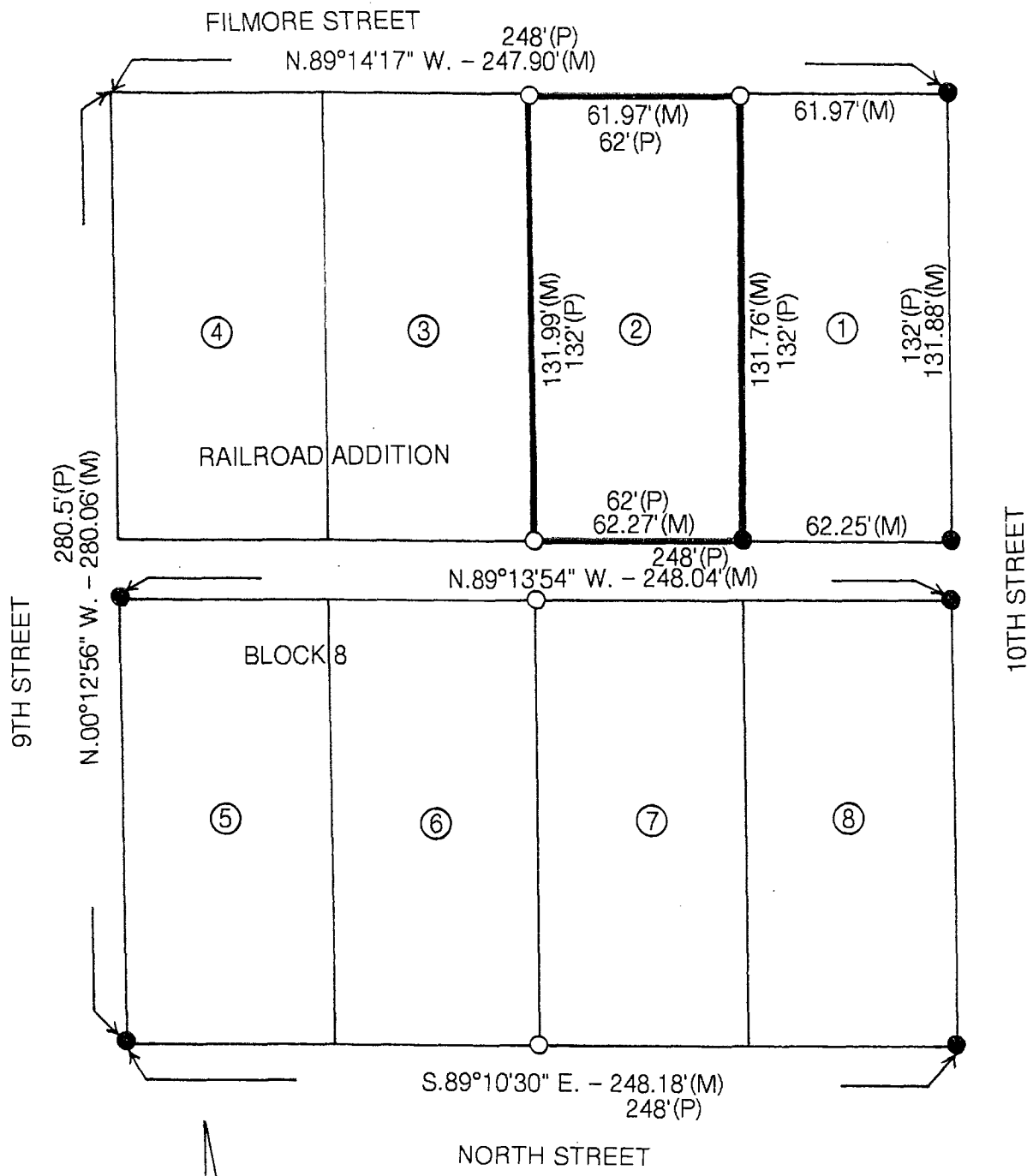
CHEK

VANCE & HOCHSTETLER, P.C. • CONSULTING ENGINEERS • WINTERSET, IOWA 50273

14-405 CHARLES T. VANCE • 110 WEST GREEN ST., WINTERSET, IOWA • (515) 462-3995

JAMES M. HOCHSTETLER • 110 WEST GREEN ST., WINTERSET, IOWA • FAX: (515) 462-9845

PLAT OF SURVEY FOR MARK W. MCKEEVER OF LOT 2, BLOCK 8, RAILROAD
ADDITION TO THE CITY OF WINTERSET, MADISON COUNTY, IOWA.



0 25' 50' 75'

DATE OF SURVEY: 3-24-14

● FOUND CIR #5041
 ○ SET CIR #6808
 (M) MEASURED DISTANCE
 (P) PLATTED DISTANCE

I hereby certify that this land surveying document was prepared and the related survey work was performed by me or under my direct personal supervision and that I am a duly licensed Land Surveyor under the laws of the State of Iowa.

J.M. Hochstetler
 J.M. HOCHSTETLER
 License number 6808 Date 3/31/14
 My license renewal date is December 31, 2016
 Pages or sheets covered by this seal: 1

LICENSED LAND SURVEYOR
 J. M. HOCHSTETLER
 #6808
 IOWA