



Document 2013 1981

Book 2013 Page 1981 Type 06 026 Pages 1
Date 7/03/2013 Time 3:18 PM
Rec Amt \$7.00

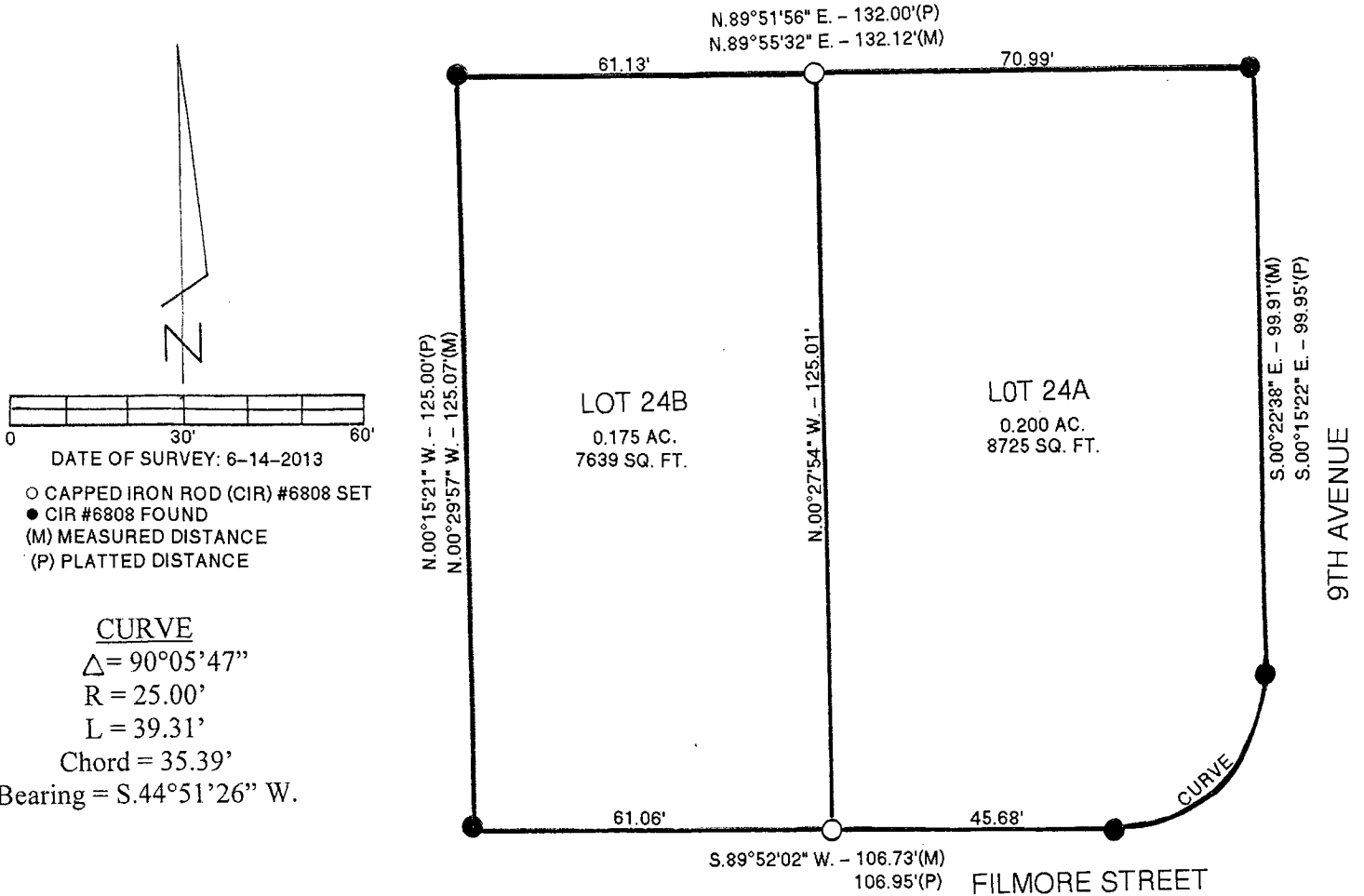
INDX ✓
ANNO
SCAN
CHEK

LISA SMITH, COUNTY RECORDER
MADISON COUNTY IOWA

VANCE & HOCHSTETLER, P.C. • CONSULTING ENGINEERS • WINTERSET, IOWA 50273

13-1015 CHARLES T. VANCE • 110 WEST GREEN ST., WINTERSET, IOWA • (515) 462-3995
JAMES M HOCHSTETLER • 110 WEST GREEN ST., WINTERSET, IOWA • FAX: (515) 462-9845

PLAT OF SURVEY TO DIVIDE LOT 24 OF CORKREAN & WATTS ADDITION,
PLAT NO. 5, CITY OF WINTERSET, MADISON COUNTY, IOWA
OWNED BY CORKREAN HOMES.



LEGAL DESCRIPTION:

A subdivision of existing Lot 24: Corkrean & Watts Addition, Plat No. 5, City of Winterset, Madison County, Iowa more particularly described as follows:

LOT 24A

Beginning at the Northeast Corner of Lot 24, Corkrean & Watts Addition, Plat No. 5, City of Winterset, Madison County, Iowa thence South 00°22'38" East 99.91 feet along the East line of said Lot 24; thence Southwest 39.31 feet along a 25.00 foot radius curve with a 35.39 foot chord bearing South 44°51'26" West; thence South 89°52'02" West 45.68 feet; thence North 00°27'54" West 125.01 feet along the common wall of a duplex building extended to the North line of said Lot 24; thence North 89°55'32" East 70.99 feet to the Point of Beginning containing 0.200 acres (8725 SQ. FT.).

LOT 24B

Beginning at the Northwest Corner of Lot 24, Corkrean & Watts Addition, Plat No. 5, City of Winterset, Madison County, Iowa thence North 89°55'32" East 61.13 feet along the North line of said Lot 24; thence South 00°27'54" East 125.01 feet along the common wall of a duplex building extended to the South line of said Lot 24; thence South 89°52'02" West 61.06 feet to the Southwest Corner of said Lot 24; thence North 00°29'57" West 125.07 feet to the Point of Beginning containing 0.175 acres (7639 SQ. FT.).

