



Document 2013 1769

Book 2013 Page 1769 Type 06 026 Pages 1

Date 6/11/2013 Time 3:49 PM

Rec Amt \$7.00

INDX  
ANNO  
SCAN  
CHEK

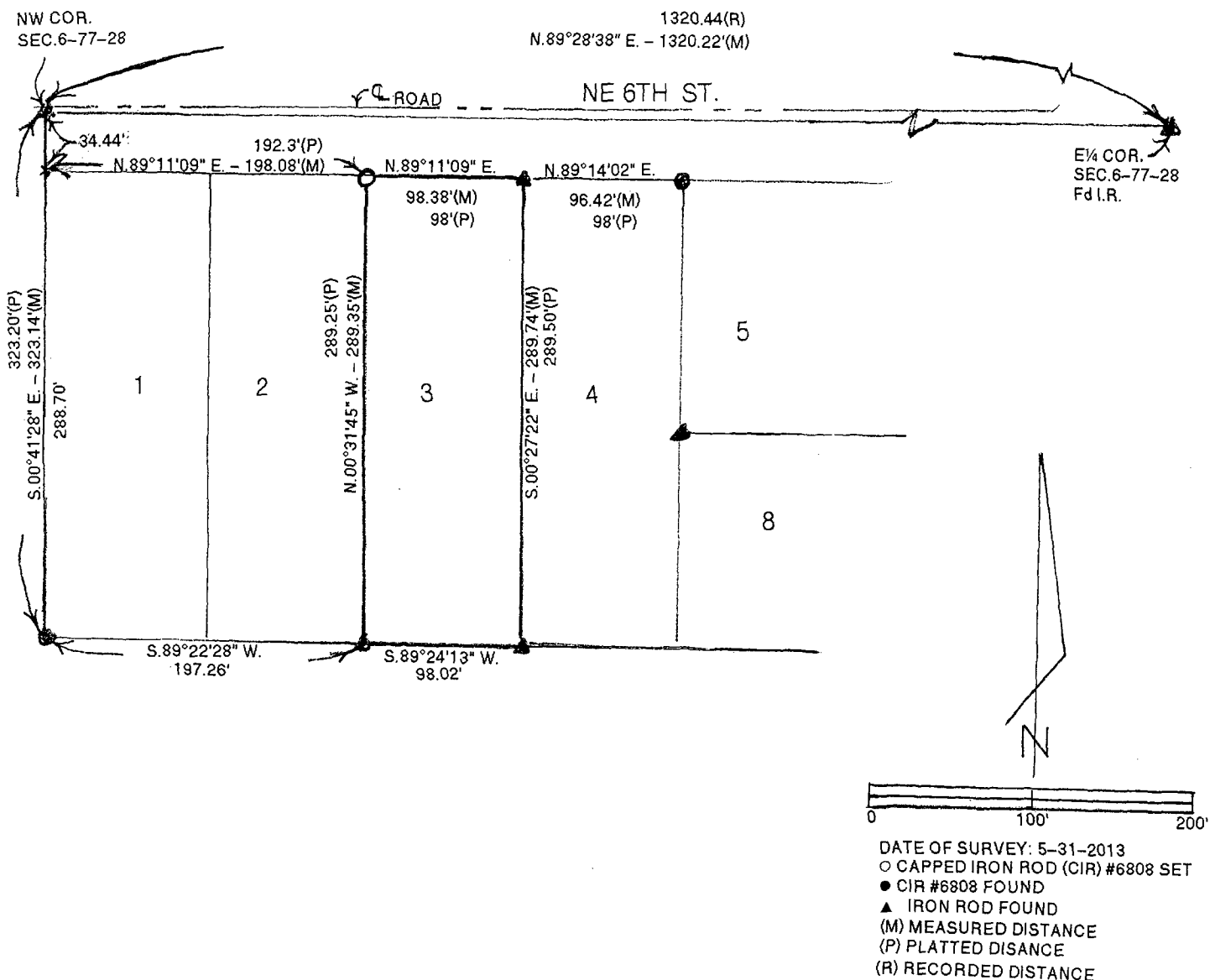
LISA SMITH, COUNTY RECORDER  
MADISON COUNTY IOWA

VANCE & HOCHSTETLER, P.C. • CONSULTING ENGINEERS • WINTERSET, IOWA 50273

13-935

CHARLES T. VANCE • 110 WEST GREEN ST., WINTERSET, IOWA • (515) 462-3995  
JAMES M HOCHSTETLER • 110 WEST GREEN ST., WINTERSET, IOWA • FAX: (515) 462-9845

PLAT OF SURVEY OF LOT 3 OF COOK'S ADDITION  
TO CITY OF EARLHAM, MADISON COUNTY, IOWA  
OWNED BY DARRELL D. & JUDY MAE MCDOLE.



LEGAL DESCRIPTION:

Lot 3 of Cook's Addition to City of Earlham, Madison County, Iowa.

I hereby certify that this land surveying document was prepared and the related survey work was performed by me or under my direct personal supervision and that I am a duly licensed Land Surveyor under the laws of the State of Iowa.

*J.M. Hochstetler*  
 J.M. HOCHSTETLER  
 License number 6808 Date 6/11/13  
 My license renewal date is December 31, 2013  
 Pages or sheets covered by this seal: 1

LICENSED LAND SURVEYOR  
 J. M. HOCHSTETLER  
 #6808  
 IOWA