



Document 2013 1085

Book 2013 Page 1085 Type 06 026 Pages 1

Date 4/17/2013 Time 3:51 PM

Rec Amt \$7.00

INDX
ANNO
SCAN
CHEK

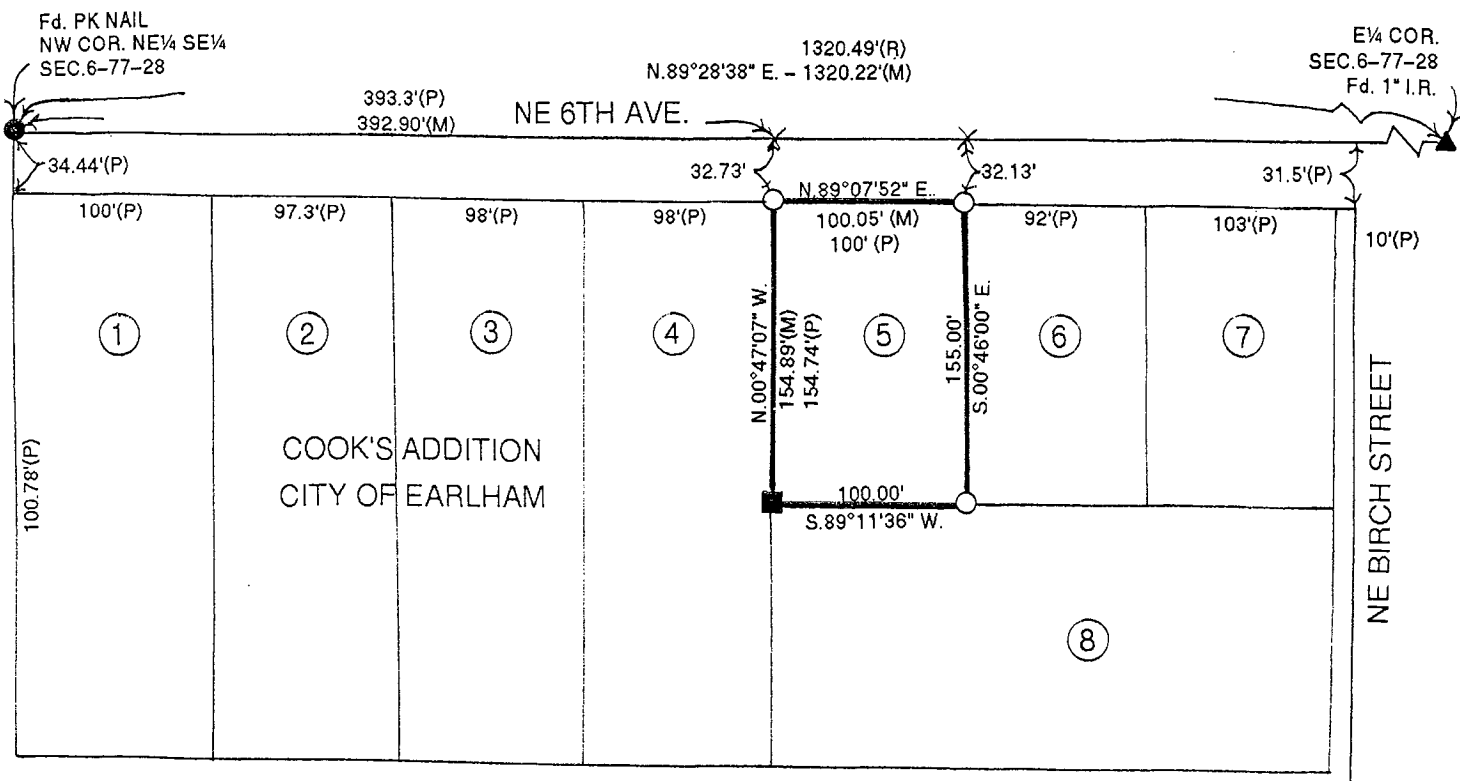
LISA SMITH, COUNTY RECORDER
MADISON COUNTY IOWA

VANCE & HOCHSTETLER, P.C. • CONSULTING ENGINEERS • WINTERSET, IOWA 50273

13-435

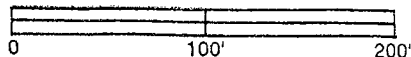
CHARLES T. VANCE • 110 WEST GREEN ST., WINTERSET, IOWA • (515) 462-3995
JAMES M HOCHSTETLER • 110 WEST GREEN ST., WINTERSET, IOWA • FAX: (515) 462-9845

PLAT OF SURVEY OF LOT 5 OF COOK'S ADDITION TO
CITY OF EARLHAM, MADISON COUNTY, IOWA
OWNED BY DON APPLIGATE.



LEGAL DESCRIPTION:

Lot 5 of Cook's Addition to City of Earlham, Madison County, Iowa.



DATE OF SURVEY: 4-5-2013

- CAPPED IRON ROD (CIR) #6808 SET
- 1/2" IRON ROD FOUND
- PK NAIL FOUND
- ▲ 1" IRON ROD FOUND
- (P) PLATTED DISTANCE
- (M) MEASURED DISTANCE
- (R) RECORDED DISTANCE

LICENSED LAND SURVEYOR

J. M.
HOCHSTETLER
#6808

IOWA

I hereby certify that this land surveying document was prepared and the related survey work was performed by me or under my direct personal supervision and that I am a duly licensed Land Surveyor under the laws of the State of Iowa.

J. M. Hochstetler

J.M. HOCHSTETLER
License number 6808 Date 4/15/13
My license renewal date is December 31, 2013
Pages or sheets covered by this seal: 1