



Document 2013 500

Book 2013 Page 500 Type 06 043 Pages 1  
Date 2/15/2013 Time 3:43 PM  
Rec Amt \$7.00

INDX ✓  
ANNO  
SCAN  
CHK

LISA SMITH, COUNTY RECORDER  
MADISON COUNTY IOWA

VANCE & HOCHSTETLER, P.C. CONSULTING ENGINEERS, WINTERSSET, IOWA (515)462-3995

CHARLES T. VANCE, 110 WEST GREEN ST., WINTERSSET, IOWA 50273  
JAMES M. HOCHSTETLER, 110 WEST GREEN ST., WINTERSSET, IOWA 50273

### UNITED STATES PUBLIC LAND SURVEY CORNER CERTIFICATE

OR

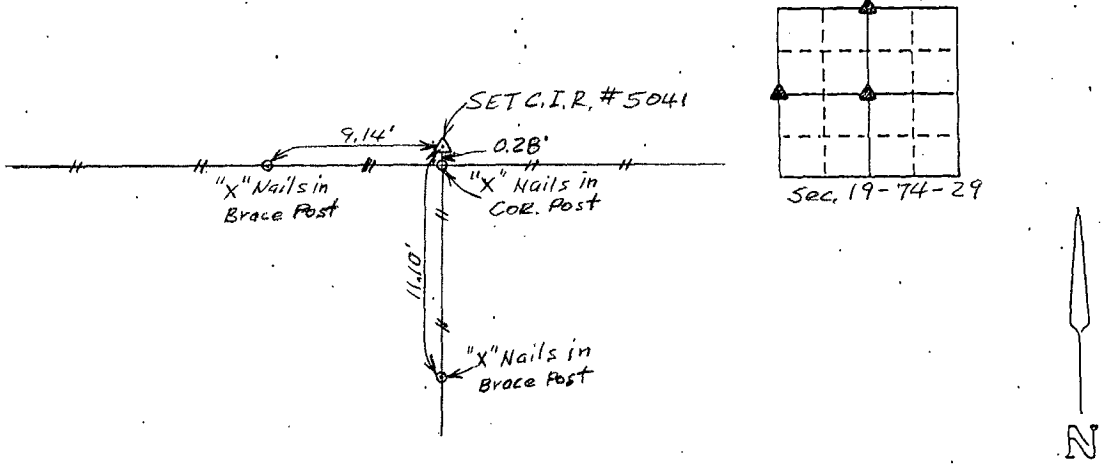
Land Survey Monuments situated in Section 19, Township T74 North, Range 29 West, of the Fifth Principal Meridian, Madison County, Iowa.  
Previously recorded in N/A in County Recorder's Office.  
(book, page, document number, etc.)

(Show reason for preparing this certificate, the evidence and detailed procedures used in establishing the corner positions and monumentation found or placed.)

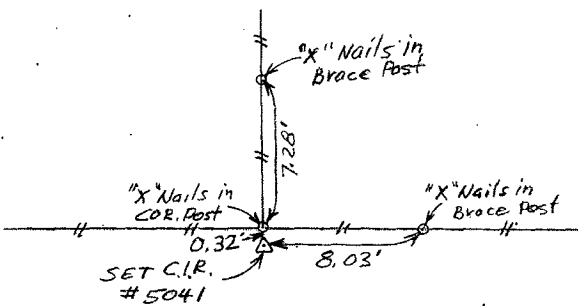
Monument Description and Remarks: Set Capped Iron Rod #5041 at North Quarter Corner in line with fence south and East-West fence. Set Capped Iron Rod #5041 at West Quarter Corner in line with fence North and East-West fence. Set Capped Iron Rod #5041 at CENTER CORNER in line with fence North and on centerline of 315th LN. Right of Way.

#### PLAN - VIEW

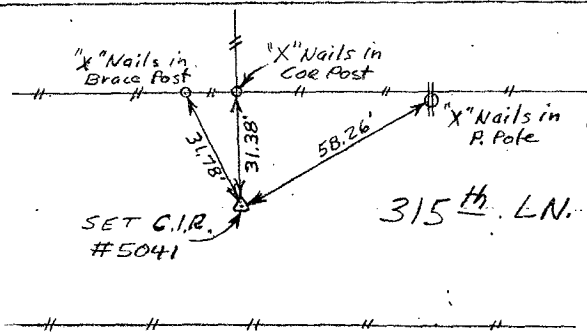
(Show a minimum of three reference ties to durable physical objects, relevant monuments and physical conditions that will enable recovery of the corner.)



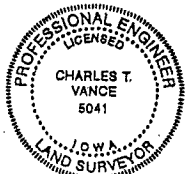
Ref. to N. 1/4 Cor. Sec. 19, T74N, R29W.



Ref. to W. 1/4 Cor. Sec. 19, T74N, R29W.



Ref. to CENTER COR. Sec. 19, T74N, R29W



I hereby certify that this land surveying document was prepared and the related survey work was performed by me or under my direct personal supervision and that I am a duly Licensed Land Surveyor under the laws of the State of Iowa.

Charles T. Vance 15 Feb 2013  
Charles T. Vance, PE & PLS Date

License No. 5041

My License renewal date is 31, December 2013

Corners	Section	Twp	Range
N. 1/4 COR	19	T74N	R29W.
W. 1/4 COR	19	T74N	R29 W
CENTER	19	T74N	R29W