



INDX  
ANNO  
SCAN  
CHECK

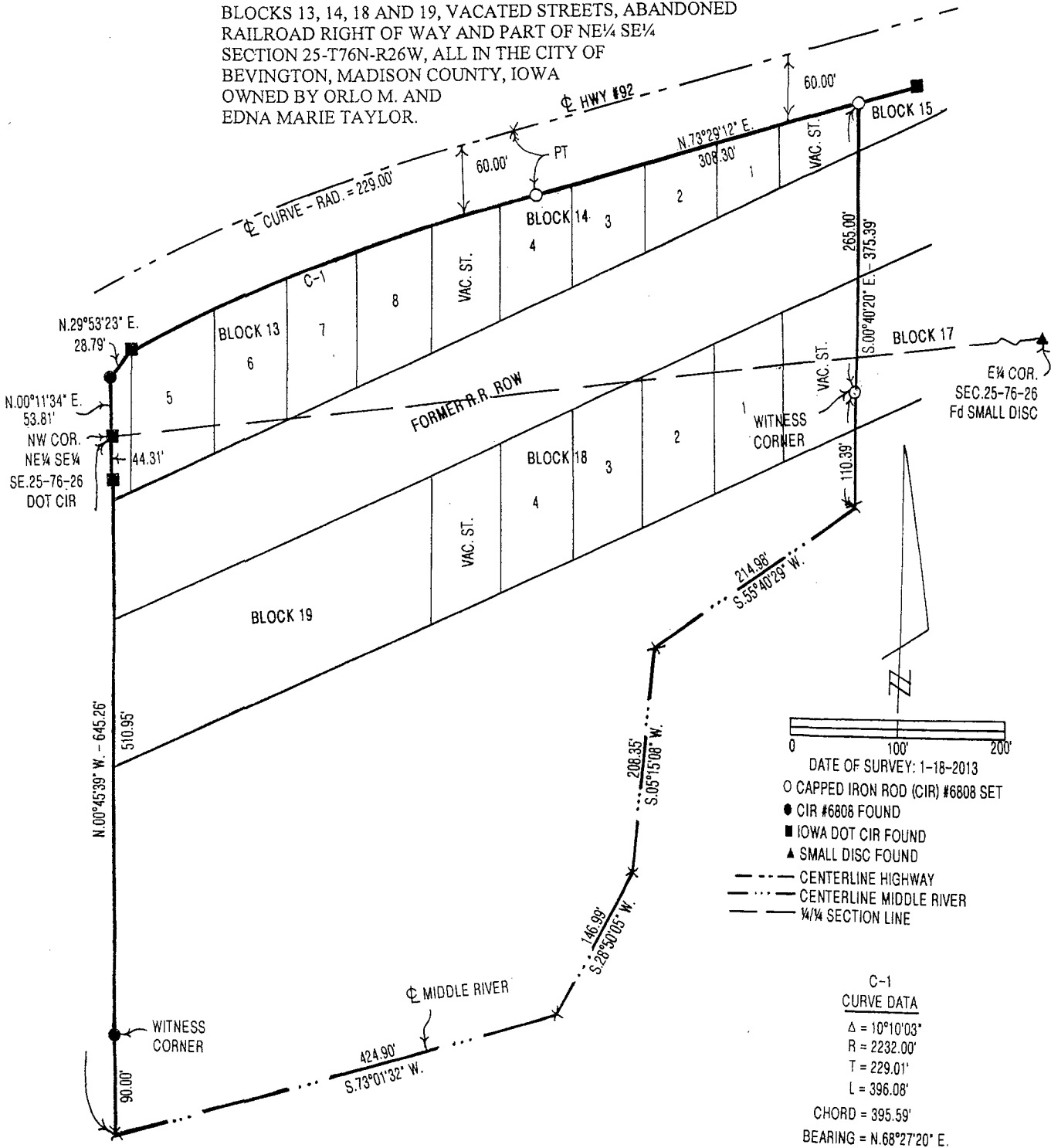
LISA SMITH, COUNTY RECORDER  
MADISON COUNTY IOWA

VANCE & HOCHSTETLER, P.C. • CONSULTING ENGINEERS • WINTERSET, IOWA 50273

2013-4

CHARLES T. VANCE • 110 WEST GREEN ST., WINTERSET, IOWA • (515) 462-3995  
JAMES M HOCHSTETLER • 110 WEST GREEN ST., WINTERSET, IOWA • FAX: (515) 462-9845

PLAT OF SURVEY OF PROPERTY SOUTH OF IOWA HIGHWAY NO. 92 AND NORTH OF THE CENTERLINE OF MIDDLE RIVER CONTAINING PART OF BLOCKS 13, 14, 18 AND 19, VACATED STREETS, ABANDONED RAILROAD RIGHT OF WAY AND PART OF NE 1/4 SE 1/4 SECTION 25-T76N-R26W, ALL IN THE CITY OF BEVINGTON, MADISON COUNTY, IOWA OWNED BY ORLO M. AND EDNA MARIE TAYLOR.



- DATE OF SURVEY: 1-18-2013
- CAPPED IRON ROD (CIR) #6808 SET
- CIR #6808 FOUND
- IOWA DOT CIR FOUND
- ▲ SMALL DISC FOUND
- CENTERLINE HIGHWAY
- CENTERLINE MIDDLE RIVER
- 1/4 SECTION LINE

C-1  
CURVE DATA

Δ	= 10°10'03"
R	= 2232.00'
T	= 229.01'
L	= 396.08'
CHORD	= 395.59'
BEARING	= N.68°27'20" E.

LICENSED LAND SURVEYOR

J. M.  
HOCHSTETLER  
#6808

IOWA

I hereby certify that this land surveying document was prepared and the related survey work was performed by me or under my direct personal supervision and that I am a duly licensed Land Surveyor under the laws of the State of Iowa.

*J. M. Hochstetler*

J.M. HOCHSTETLER  
License number 6808 Date 1/22/13  
My license renewal date is December 31, 2013  
Pages or sheets covered by this seal: 1