



Document 2012 3829

Book 2012 Page 3829 Type 06 043 Pages 1
Date 12/17/2012 Time 9:59 AM
Rec Amt \$.00

INDX
ANNO
SCAN
CHEK

LISA SMITH, COUNTY RECORDER
MADISON COUNTY IOWA

Prepared By: Michael James Hackett, Madison County Engineer's Office, 1105 E. Court Ave., Winterset, Ia. 50273, Tel. (515) 462-1136

UNITED STATES PUBLIC LAND SURVEY CORNER CERTIFICATE OF

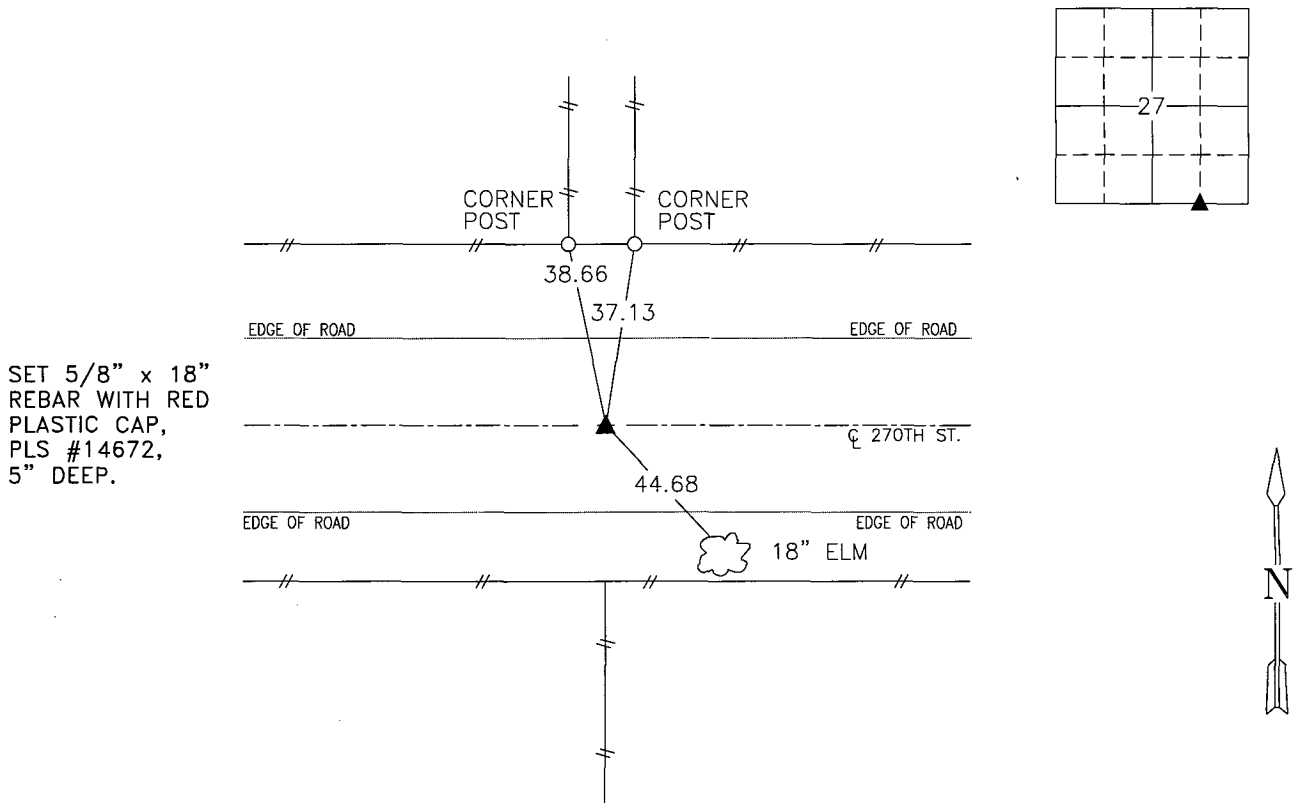
Land Survey Monuments situated in Section 27, Township 75 N, Range 29 W, of the Fifth Principal Meridian, Madison County, Iowa.
Previously recorded in _____ in County Recorder's Office.
(book, page, document number, etc.)

(Show reason for preparing this certificate, the evidence and detailed procedures used in establishing the corner positions and monumentation found or placed.)

Monument Description and Remarks: Set 5/8" x 18" rebar with red plastic cap, PLS #14672, 5 inches deep. The corner position based on the split of the distance between the southwest corner of the Southeast Quarter and the southeast corner of the Southeast Quarter. Accepted position. This corner was prepared because there was no corner certificate previously recorded.

PLAN VIEW

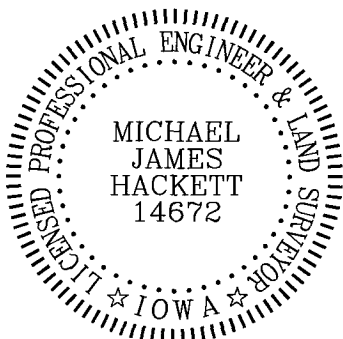
(Show a minimum of three reference ties to durable physical objects, relevant monuments and physical conditions that will enable recovery of the corner.)



SET 5/8" x 18"
REBAR WITH RED
PLASTIC CAP,
PLS #14672,
5" DEEP.

SE. COR., SW. 1/4, SE 1/4 SEC. 27

NOTE: ALL TIES TO "X" NAILS UNLESS NOTED



I hereby certify that this land surveying document was prepared and the related survey work was performed by me or under my direct personal supervision and that I am a duly Licensed Land Surveyor under the laws of the State of Iowa.

Signed Michael James Hackett Date 12/13/2012
Michael James Hackett

Iowa license number 14672.
My license renewal date is 12/31/2012.
Pages covered by this seal: 1.