



Document 2012 3757

Book 2012 Page 3757 Type 06 026 Pages 1  
Date 12/11/2012 Time 3:51 PM  
Rec Amt \$7.00

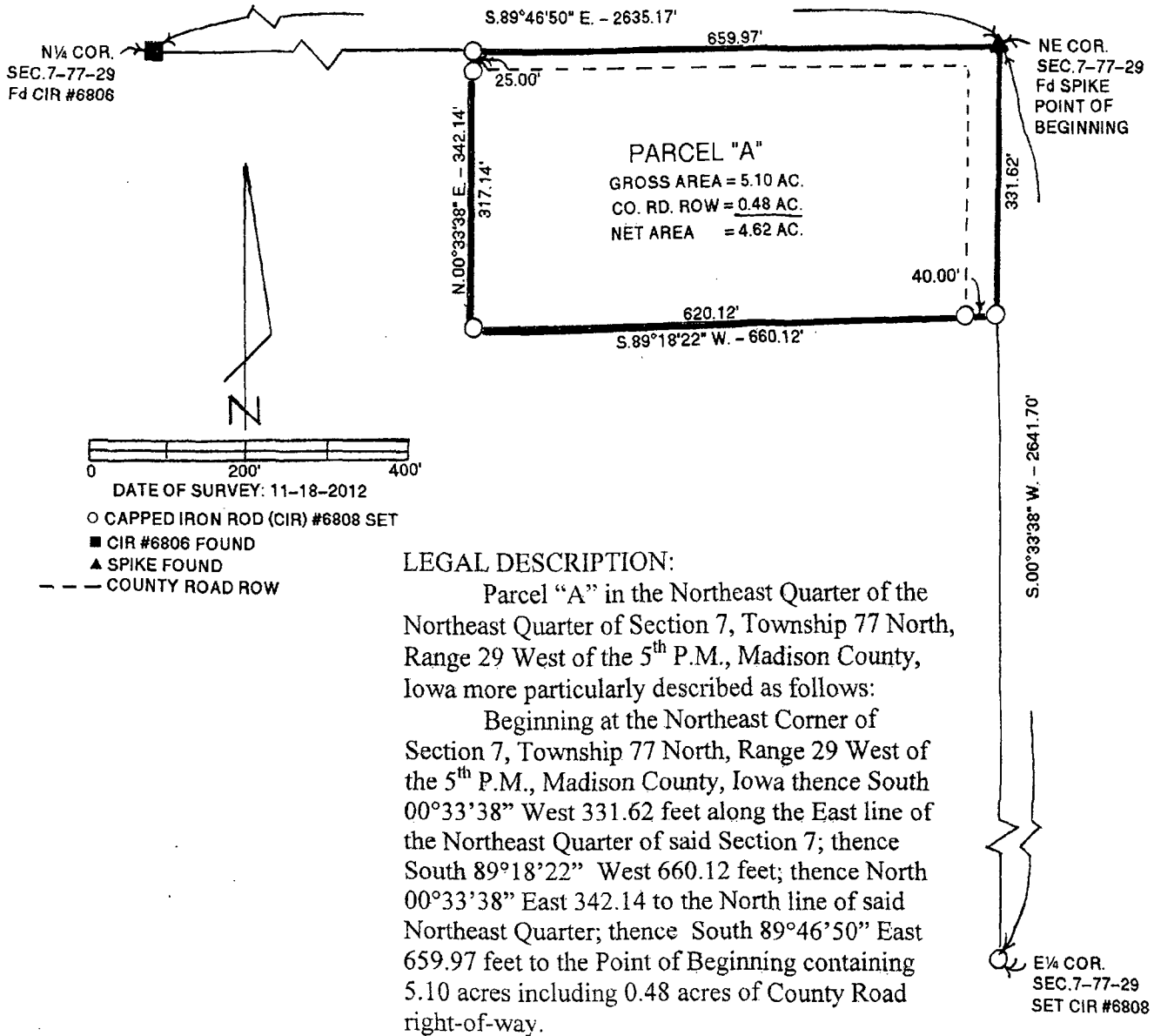
INDX  
ANNO  
SCAN  
CHEK

LISA SMITH, COUNTY RECORDER  
MADISON COUNTY IOWA

VANCE & HOCHSTETLER, P.C. • CONSULTING ENGINEERS • WINTERSSET, IOWA 50273

12-1425 CHARLES T. VANCE • 110 WEST GREEN ST., WINTERSSET, IOWA • (515) 462-3995  
JAMES M HOCHSTETLER • 110 WEST GREEN ST., WINTERSSET, IOWA • FAX: (515) 462-9845

PLAT OF SURVEY IN THE NORTHEAST QUARTER OF THE NORTHEAST QUARTER  
OF SECTION 7, TOWNSHIP 77 NORTH, RANGE 29 WEST OF  
THE 5<sup>TH</sup> P.M., MADISON COUNTY, IOWA OWNED  
BY SANDRA L. BLOMQUIST ROGERS.



LEGAL DESCRIPTION:

Parcel "A" in the Northeast Quarter of the Northeast Quarter of Section 7, Township 77 North, Range 29 West of the 5<sup>th</sup> P.M., Madison County, Iowa more particularly described as follows:

Beginning at the Northeast Corner of Section 7, Township 77 North, Range 29 West of the 5<sup>th</sup> P.M., Madison County, Iowa thence South 00°33'38" West 331.62 feet along the East line of the Northeast Quarter of said Section 7; thence South 89°18'22" West 660.12 feet; thence North 00°33'38" East 342.14 to the North line of said Northeast Quarter; thence South 89°46'50" East 659.97 feet to the Point of Beginning containing 5.10 acres including 0.48 acres of County Road right-of-way.

I hereby certify that this land surveying document was prepared and the related survey work was performed by me or under my direct personal supervision and that I am a duly licensed Land Surveyor under the laws of the State of Iowa.

*J.M. Hochstetler*  
J.M. HOCHSTETLER  
License number 6808 Date 7/2/11  
My license renewal date is December 31, 2013  
Pages or sheets covered by this seal: 1

LICENSED LAND SURVEYOR  
J. M. HOCHSTETLER  
#6808  
IOWA