

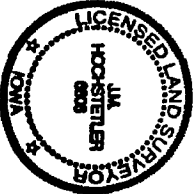
SEARCHED
INDEXED
SERIALIZED
RECORDED
MAR 28 1997
R.M.F. \$ 1.00

FILED NO. 2606
BOOK 2 PAGE 769
97 MAR 28 PM 4:19

RECORDED
MADISON COUNTY 14623995

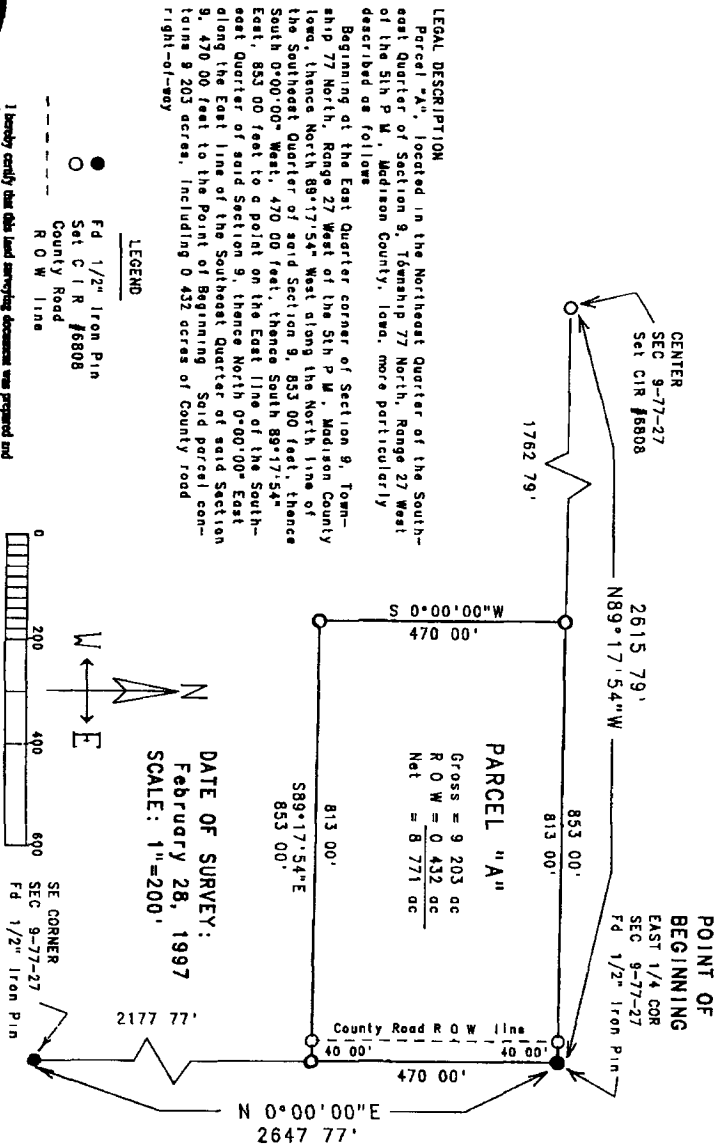
VANCE & HOCHSTETLER, P.C. CONSULTING ENGINEERS, WINTERSSET, IOWA

CHARLES T. VANCE, 110 WEST GREEN ST., WINTERSSET, IOWA 50273
JAMES M. HOCHSTETLER, 110 WEST GREEN ST., WINTERSSET, IOWA 50273



I hereby certify that this land surveying document was prepared and the related survey work was performed by me or under my direct personal supervision and that I am a duly Licensed Land Surveyor under the laws of the State of Iowa.
J.M. Hochstetler
License number 6808
By license renewed thru to December 31, 1997.
Pages or sheets covered by this plat: 1

A PLAT OF SURVEY FOR JIM MEYER IN THE NORTHEAST QUARTER OF THE SOUTHEAST QUARTER OF SECTION 9, TOWNSHIP 77 NORTH, RANGE 27 WEST OF THE 5th P.M., MADISON COUNTY, IOWA.



DATE OF SURVEY:
February 28, 1997
SCALE: 1"=200'

