

REC \$ 5.00

AUD \$

R.M.F. \$ 1.00

COMPUTER 
RECORDED 
COMPARED

FILED NO. 2185

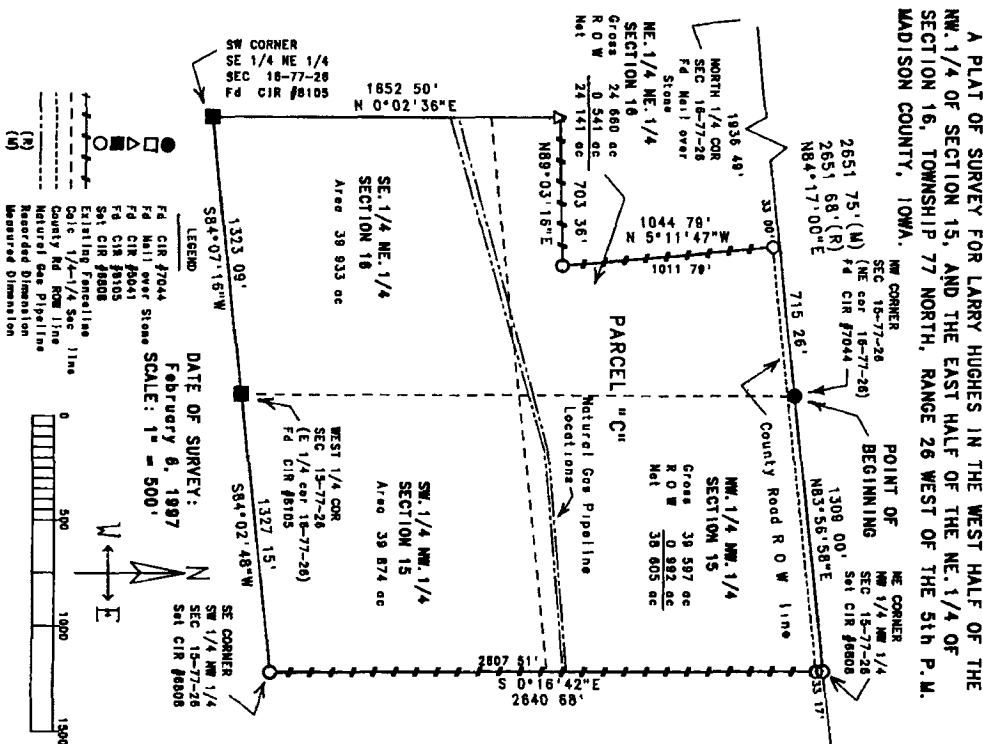
BOOK 2 PAGE 756

97 FEB 14 PM 3: 55

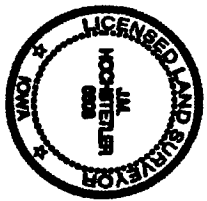
MICHELLE UTSLER
RECORDER
MADISON COUNTY, IOWA

VANCE & HOCHSTETLER, P.C. CONSULTING ENGINEERS, WINTERSSET, IOWA (515)462-3995

CHARLES T. VANCE, 110 WEST GREEN ST., WINTERSSET, IOWA 50273
JAMES M. HOCHSTETLER, 110 WEST GREEN ST., WINTERSSET, IOWA 50273



A PLAT OF SURVEY FOR LARRY HUGHES IN THE WEST HALF OF THE NW 1/4 OF SECTION 15, AND THE EAST HALF OF THE NE 1/4 OF SECTION 16, TOWNSHIP 77 NORTH, RANGE 26 WEST OF THE 5TH P.M. MADISON COUNTY, IOWA.



I hereby certify that this land surveying document was prepared and the related survey work was performed by me or under my direct personal supervision and that I am a duly Licensed Land Surveyor under the laws of the State of Iowa.
J.M. HOCHSTETLER
Licenses number 6828
Date 2/11/97
My license renewed thru to December 31, 1997.
Pages or sheets covered by this plat: 1

LEGAL DESCRIPTION
Parcel 'C' located in the West Half of the Northwest Quarter of Section 15, and the East Half of the Northeast Quarter of Section 16, all in Township 77 North, Range 26 West of the 5th P.M., Madison County, Iowa, more particularly described as follows:
Beginning at the Northwest corner of Section 15, Township 77 North, Range 26 West of the 5th P.M., Madison County, Iowa, thence North 83°58'39\"/>