

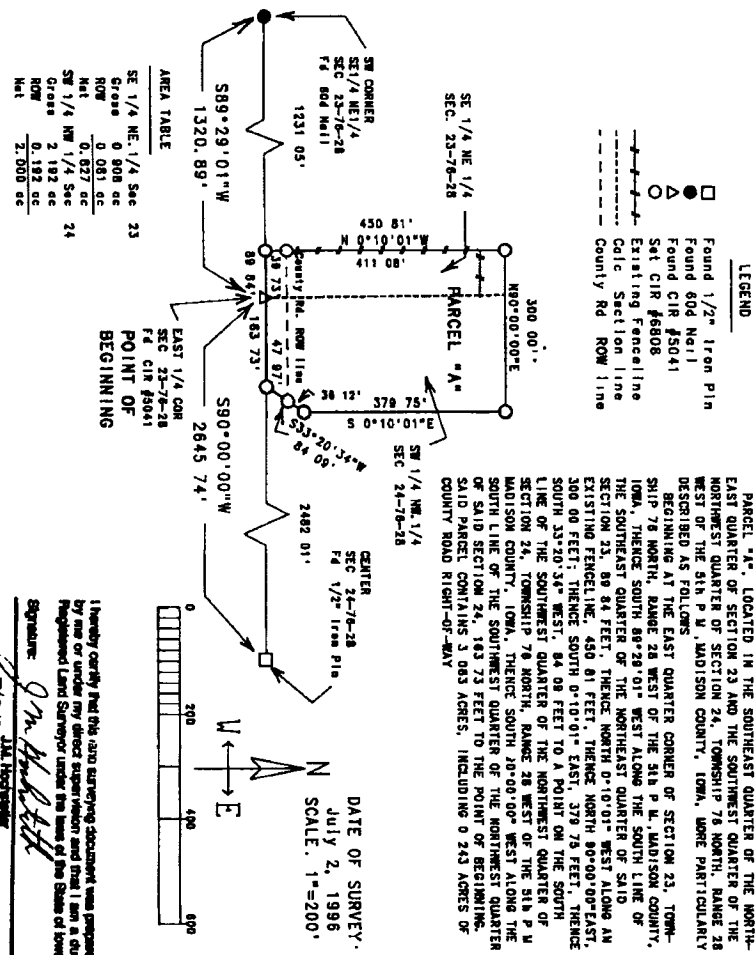
SEARCHED ✓  
INDEXED ✓  
REC'D ✓  
AUG 1 1996  
R.A.F. ✓

FILED NO. 335  
BOOK 2 PAGE 709  
96 AUG -2 PH 12: 09  
MICHELLE UTSLER  
RECORDER  
MADISON COUNTY, IOWA

**VANCE & HOCHSTETLER, P.C. CONSULTING ENGINEERS, WINTERSSET, IOWA (515)462-3895**

CHARLES T. VANCE, 110 WEST GREEN ST., WINTERSSET, IOWA 50273  
JAMES M. HOCHSTETLER, 110 WEST GREEN ST., WINTERSSET, IOWA 50273

A PLAT OF SURVEY FOR LARREE IMBODEN IN THE SOUTHEAST QUARTER OF THE NORTHEAST QUARTER OF SECTION 23 AND THE SOUTHWEST QUARTER OF THE NORTHWEST QUARTER OF SECTION 24, ALL IN TOWNSHIP 76 NORTH, RANGE 28 WEST OF THE 5th P. M., MADISON COUNTY IOWA.



I hereby certify that this and surveying documents were prepared by me or under my direct supervision and that I am a duly Registered Land Surveyor under the laws of the State of Iowa.

Signature: *J.M. Hochstetler*  
Date: 7/2/95  
J.M. Hochstetler  
Prof. No. 6908

My registration renewed date is December 31, 1997

