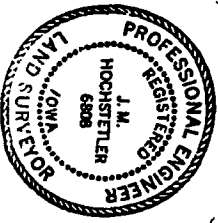
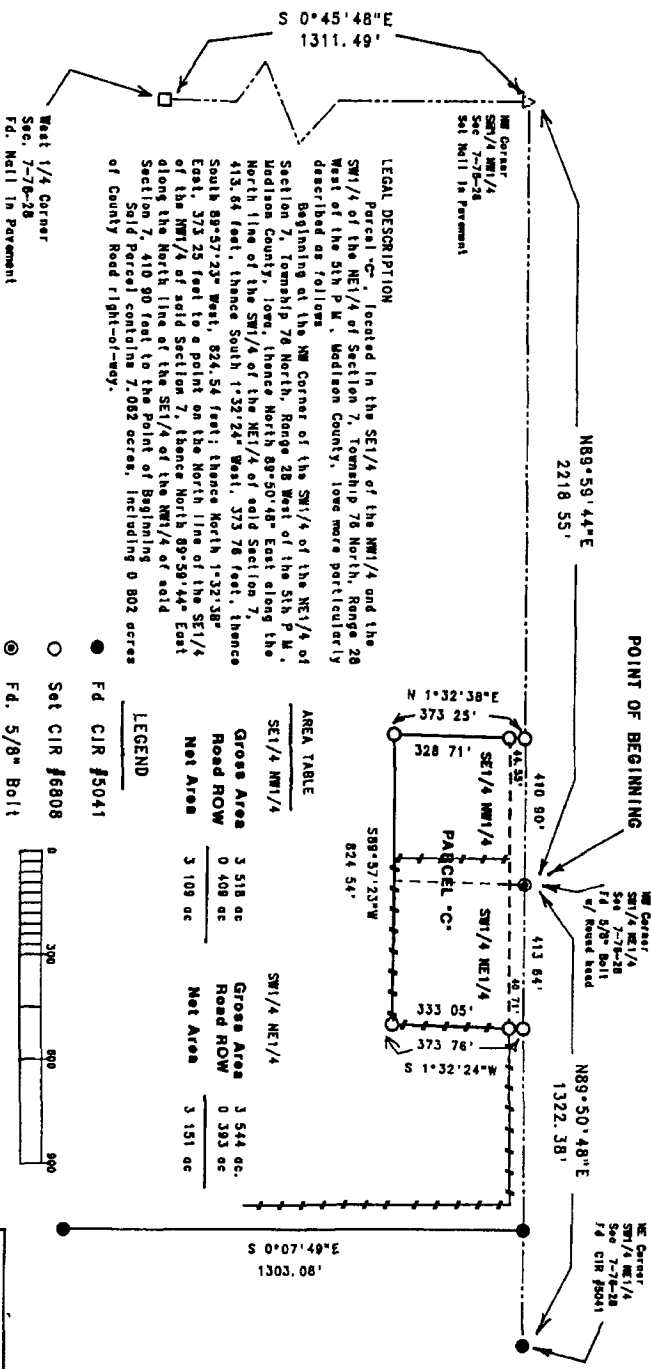


RECORDED
 COMPARED
 REC. \$ 5.00
 AUD. \$
 R.M.F. \$ 1.00

FILED NO. **1516**
 BOOK 2 PAGE 632
 95 NOV 29 PM 3:36
 MICHELLE UTSLER
 RECORDER
 MADISON COUNTY, IOWA



A PLAT OF SURVEY FOR CHARLES L. CLARK IN THE SW 1/4 OF THE NE 1/4, AND THE SE 1/4 OF THE NW 1/4 OF SECTION 7, TOWNSHIP 76 NORTH, RANGE 28 WEST OF THE 5th P.M., MADISON COUNTY, IOWA.



LEGAL DESCRIPTION

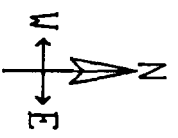
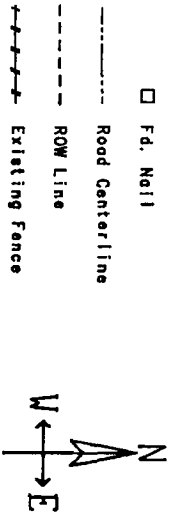
Parcel 'C', located in the SE 1/4 of the NW 1/4 and the SW 1/4 of the NE 1/4 of Section 7, Township 76 North, Range 28 West of the 5th P.M., Madison County, Iowa more particularly described as follows:
 Beginning at the NW Corner of the SW 1/4 of the NE 1/4 of Section 7, Township 76 North, Range 28 West of the 5th P.M., Madison County, Iowa, thence North 89°50'48\"/>

AREA TABLE

SECTION	Gross Area	Road ROW	Net Area
SE 1/4 NW 1/4	3 518 ac	0 408 ac	3 108 ac
SW 1/4 NE 1/4	3 544 ac	0 393 ac	3 151 ac

LEGEND

- Fd C/R #5041
- Set C/R #6808
- ⊙ Fd. 5/8\"/>



I HEREBY CERTIFY THAT THIS PLAN, SPECIFICATION, AND REPORT WAS MADE BY ME OR UNDER MY DIRECT PERSONAL SUPERVISION AND THAT I AM A DULY REGISTERED PROFESSIONAL ENGINEER AND LAND SURVEYOR UNDER THE LAWS OF THE STATE OF IOWA.
 J.M. Hochstetler, I.A. Reg. No. 6808
 My Registration Expires December 31, 19 85

CLARK SURVEY
 NOVEMBER 20, 1995
 Scale: 1" = 300'
 VANCE & HOCHSTETLER, PC
 CONSULTING ENGINEERS
 71 JEFFERSON ST.
 WINNERSSET, IA, 50273
 PH. (515) 482-3985