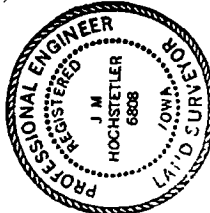
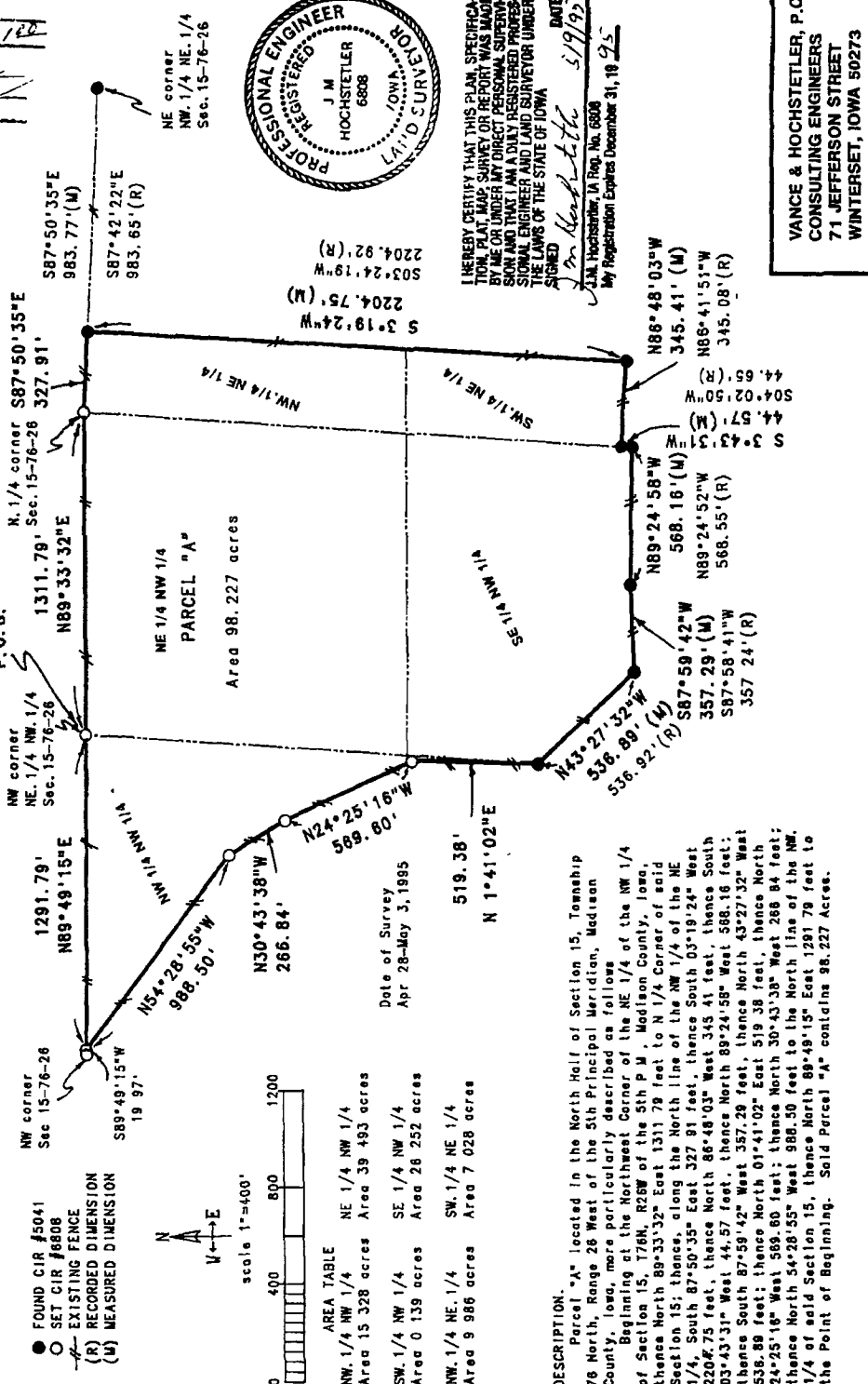


PLAT OF SURVEY FOR BRUCE JOHNSTON
IN THE N. 1/2 OF SECTION 15, T76N, R26W OF THE 5TH P. M.,
MADISON COUNTY, IOWA

REC 502
AUD: [initials]
R.M.F. \$ 120
C. [initials]



I HEREBY CERTIFY THAT THIS PLAN, SPECIFICATION, PLAT, MAP, SURVEY OR REPORT WAS MADE BY ME OR UNDER MY DIRECT PERSONAL SUPERVISION AND THAT I AM A DULY REGISTERED PROFESSIONAL ENGINEER AND LAND SURVEYOR UNDER THE LAWS OF THE STATE OF IOWA.
J.M. Hochstetler, P.E.
DATE 5/19/95
My Registration Expires December 31, 19 95

VANCE & HOCHSTETLER, P.C.
CONSULTING ENGINEERS
71 JEFFERSON STREET
WINTERSSET, IOWA 50273