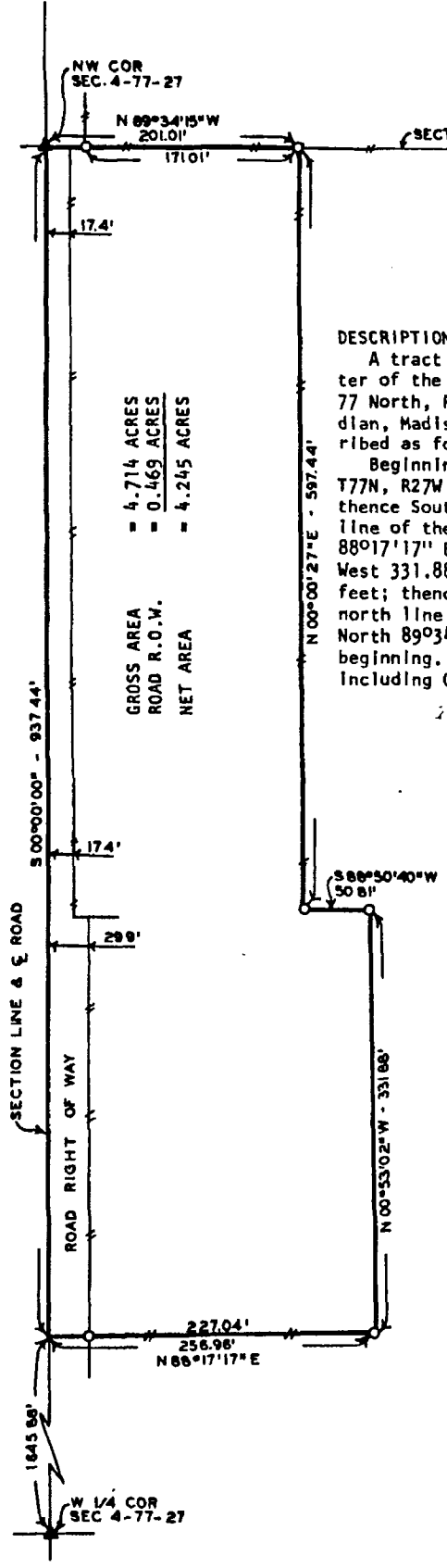


FARM PLAT RECORD 2

PLAT OF SURVEY FOR DON NOACK  
 IN THE NW. FRAC. 1/4 OF THE NW. 1/4 OF SECTION 4, T77N, R27W  
 OF THE 5TH P.M., MADISON COUNTY, IOWA



GROSS AREA  
 ROAD R.O.W.  
 NET AREA

= 4.714 ACRES  
 = 0.469 ACRES  
 = 4.245 ACRES

Compare

FILED NO. **1012**  
 BOOK 2 PAGE 84  
 Farm Plat  
 1987 DEC - 8 AM 11:14

MARY E. WELTY  
 RECORDER  
 MADISON COUNTY, IOWA  
 Fee \$5.00

DESCRIPTION:  
 A tract of land in the Northwest fractional Quarter of the Northwest Quarter of Section 4, Township 77 North, Range 27 West of the 5th Principal Meridian, Madison County, Iowa, more particularly described as follows:  
 Beginning at the Northwest Corner of Section 4, T77N, R27W of the 5th P.M., Madison County, Iowa; thence South 00°00'00" 937.44 feet along the west line of the NW. 1/4 of said Section 4; thence North 88°17'17" East 256.96 feet; thence North 00°53'02" West 331.88 feet; thence South 88°50'40" West 50.81 feet; thence North 00°00'27" East 597.44 feet to the north line of the NW. 1/4 of said Section 4; thence North 89°34'15" West 201.01 feet to the point of beginning. Said tract of land contains 4.714 Acres including 0.469 Acres of public highway right of way.



SCALE: 1" = 100'

- ▲ FOUND IRON PIN
- SET C.I.R. #5041
- — — EXISTING FENCE

I CERTIFY THAT THIS PLAN, SPECIFICATION, MAP, SURVEY OR REPORT WAS MADE BY ME OR UNDER MY DIRECT PERSONAL SUPERVISION AND THAT I AM A DULY REGISTERED PROFESSIONAL SURVEYOR AND LAND SURVEYOR UNDER THE LAWS OF THE STATE OF IOWA

DATE  
*Charles T. Vance* 10 Nov 1987  
 Charles T. Vance, P.E. & L.S. Iowa Reg. No. 5041

VANCE & HOCHSTETLER, P.C.  
 CONSULTING ENGINEERS  
 71 JEFFERSON STREET  
 WINTERSET, IOWA 50273