



Document 2012 3446

Book 2012 Page 3446 Type 06 026 Pages 1
Date 11/14/2012 Time 1:55 PM
Rec Amt \$7.00

INDEX ✓
ANNO
SCAN
CHEK

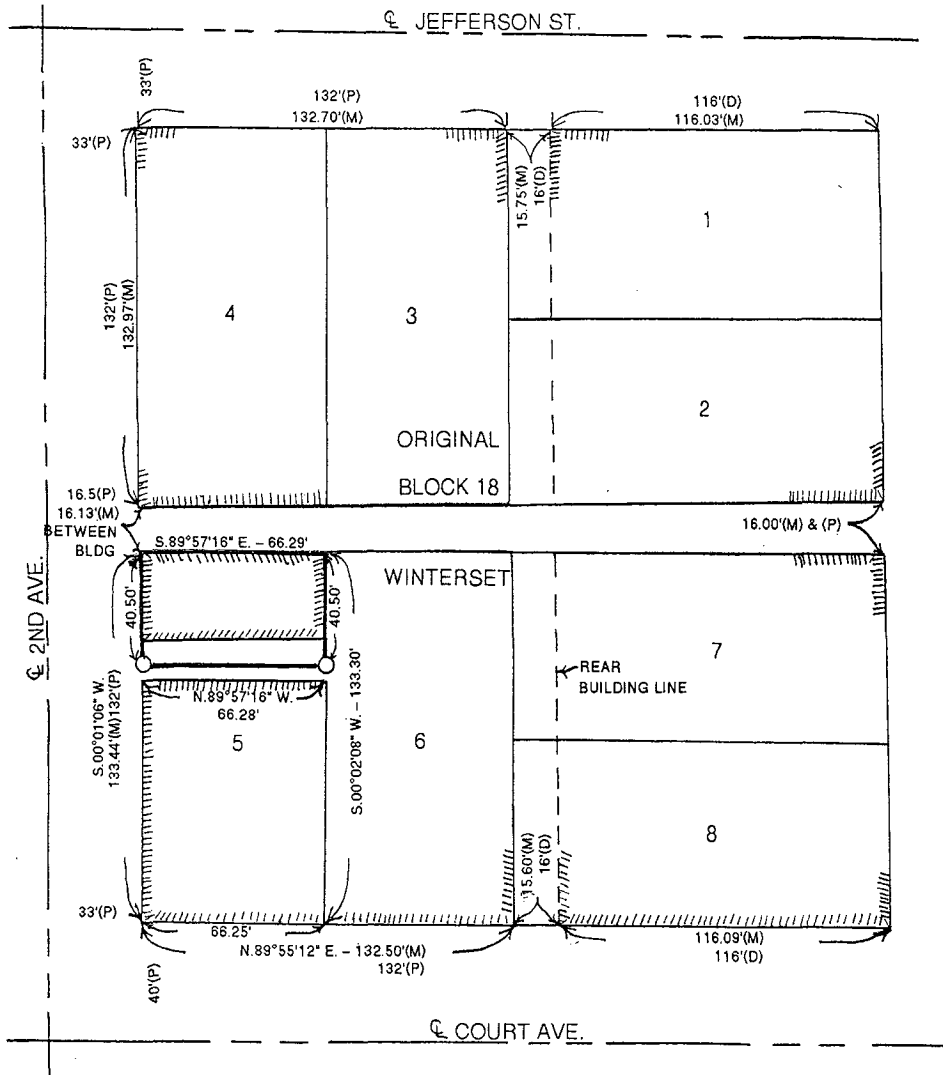
LISA SMITH, COUNTY RECORDER
MADISON COUNTY IOWA

VANCE & HOCHSTETLER, P.C. • CONSULTING ENGINEERS • WINTERSET, IOWA 50273

12-1185

CHARLES T. VANCE • 110 WEST GREEN ST., WINTERSET, IOWA • (515) 462-3995
JAMES M HOCHSTETLER • 110 WEST GREEN ST., WINTERSET, IOWA • FAX: (515) 462-9845

PLAT OF SURVEY OF THE NORTH 40.50 FEET OF LOT 5, BLOCK 18,
ORIGINAL TOWN OF WINTERSET, MADISON COUNTY, IOWA
OWNED BY MONTROSS PROPERTIES, LLC.



LEGAL DESCRIPTION:
North 40.50 feet of Lot 5, Block 18, Original Town of
Winterset, Madison County, Iowa.

North arrow pointing up.
Scale bar: 0, 50, 100 feet.
DATE OF SURVEY: 11-2-2012
O CAPPED IRON ROD (CIR) #6808 SET
X CALCULATED POINTS (NOTHING SET)
// BUILDING LINE
(M) MEASURED DISTANCE
(P) PLATTED DISTANCE
(D) DEED DISTANCE

LICENSED LAND SURVEYOR
J. M. HOCHSTETLER #6808
IOWA
I hereby certify that this land surveying document was prepared and the related survey work was performed by me or under my direct personal supervision and that I am a duly licensed Land Surveyor under the laws of the State of Iowa.
J. M. Hochstetler
J.M. HOCHSTETLER
License number 6808 Date 11/8/12
My license renewal date is December 31, 2013
Pages or sheets covered by this seal: 1