



Document 2012 2682

Book 2012 Page 2682 Type 06 026 Pages 1
Date 9/11/2012 Time 3:00 PM
Rec Amt \$7.00

INDX ✓
ANNO
SCAN
CHEK

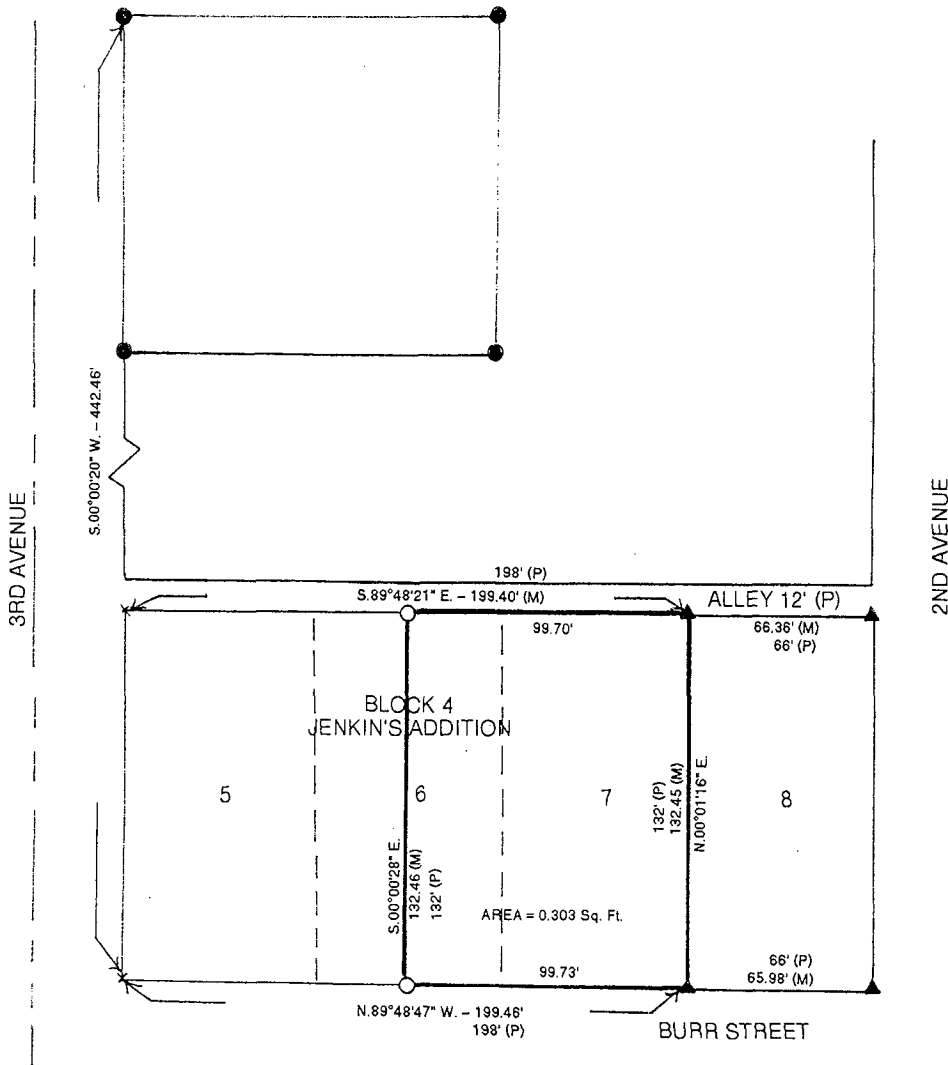
LISA SMITH, COUNTY RECORDER
MADISON COUNTY IOWA

VANCE & HOCHSTETLER, P.C. • CONSULTING ENGINEERS • WINTERSET, IOWA 50273

12-105S

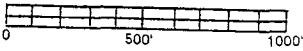
CHARLES T. VANCE • 110 WEST GREEN ST., WINTERSET, IOWA • (515) 462-3995
JAMES M HOCHSTETLER • 110 WEST GREEN ST., WINTERSET, IOWA • FAX: (515) 462-9845

PLAT OF SURVEY OF LOT 7 AND EAST HALF LOT 6, BLOCK 4, W.A.
JENKIN'S ADDITION TO THE TOWN OF WINTERSET, MADISON
COUNTY, IOWA OWNED BY DOROTHY B. HOENESS



LEGAL DESCRIPTION:

Lot 7 and East Half of Lot 6, Block 4,
W.A. Jenkin's Addition to the Town of
Winterset, Madison County, Iowa.



DATE OF SURVEY: 8-28-12

- CAPPED IRON ROD (CIR) #6808 SET
- ▲ IRON RODS FOUND
- CIR #5041 FOUND
- (M) MEASURED DISTANCE
- (P) PLATTED DISTANCE

LICENSED LAND SURVEYOR

J. M.
HOCHSTETLER
#6808

IOWA

I hereby certify that this land surveying document was prepared and the related survey work was performed by me or under my direct personal supervision and that I am a duly licensed Land Surveyor under the laws of the State of Iowa.

J. M. Hochstetler

J.M. HOCHSTETLER
License number 6808 Date 8/30/12
My license renewal date is December 31, 2013
Pages or sheets covered by this seal: 1