



Document 2012 2681

Book 2012 Page 2681 Type 06 026 Pages 1  
Date 9/11/2012 Time 2:59 PM  
Rec Amt \$7.00

INDX ✓  
ANNO ✓  
SCAN  
CHEK

LISA SMITH, COUNTY RECORDER  
MADISON COUNTY IOWA

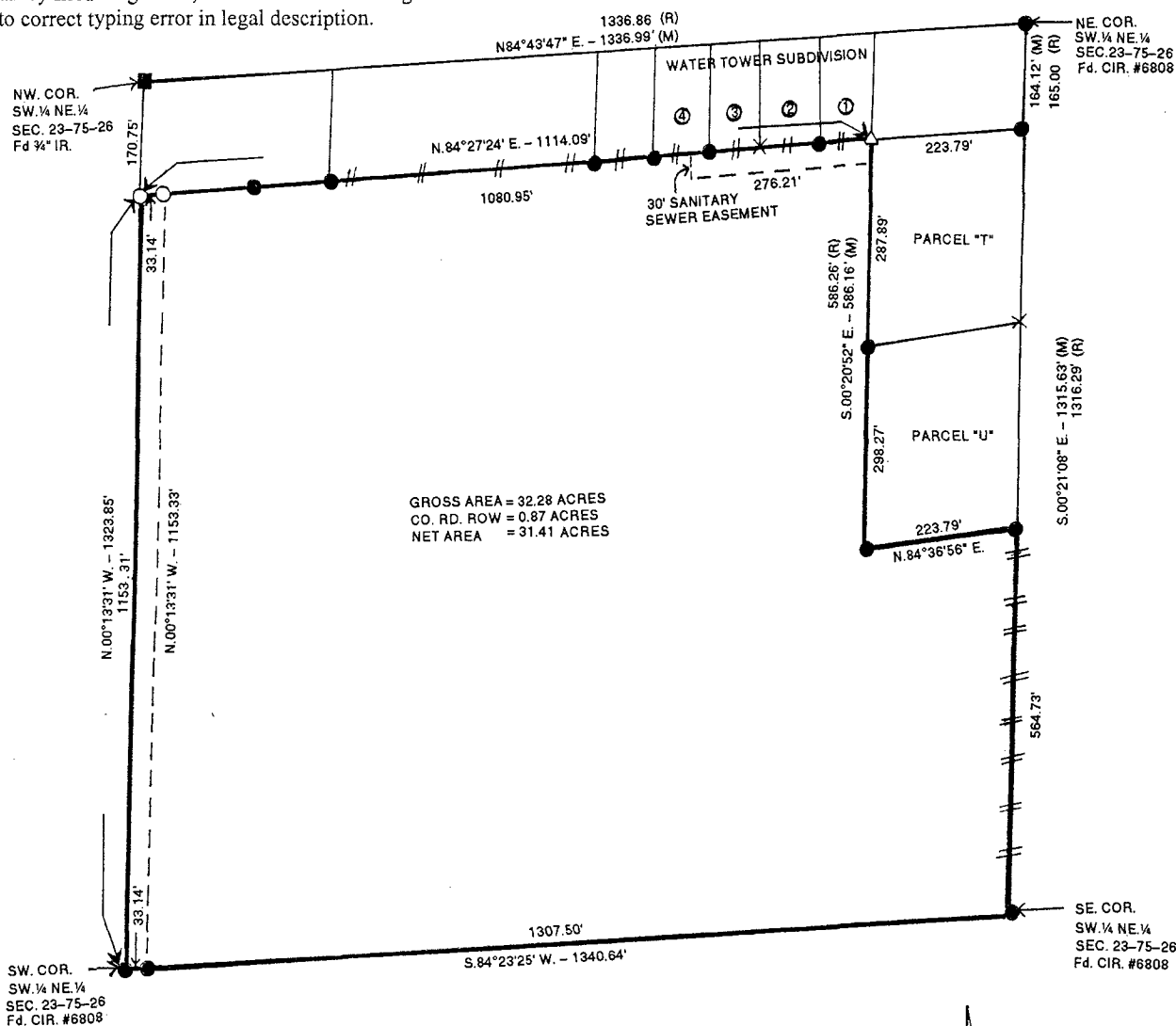
VANCE & HOCHSTETLER, P.C. • CONSULTING ENGINEERS • WINTERSET, IOWA 50273

2012-90S

CHARLES T. VANCE • 110 WEST GREEN ST., WINTERSET, IOWA • (515) 462-3995  
JAMES M HOCHSTETLER • 110 WEST GREEN ST., WINTERSET, IOWA • FAX: (515) 462-9845

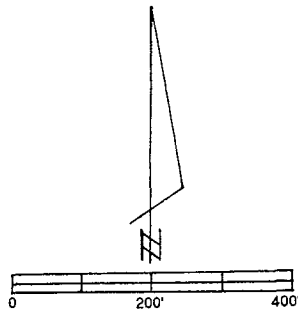
AMENDED PROPERTY LINE RETRACEMENT SURVEY OF SOUTHWEST QUARTER OF  
THE NORTHEAST QUARTER OF SECTION 23, TOWNSHIP 75 NORTH, RANGE 26  
WEST OF THE 5<sup>TH</sup> P.M., ST. CHARLES, MADISON COUNTY, IOWA EXCEPT  
THE NORTH FIVE (5) ACRES AND EXCEPT PARCELS "T" AND "U";  
OWNED BY JERRY AYERS.

Amends Survey filed August 10, 2012 in Book 2012 Page 2345.  
Amended to correct typing error in legal description.



LEGAL DESCRIPTION:

The Southwest Quarter of the Northeast Quarter of Section 23, Township 75 North, Range 26 West of the 5<sup>th</sup> P.M., City of St. Charles, Madison County, Iowa except the North Five (5) acres and Parcels "T" and "U" a Plat of Survey of which was filed on March 31, 2006 in Book 2006 Page 1266. Area contains 32.28 acres including 0.87 acres of County Road right-of-way.



**LICENSED LAND SURVEYOR**  
 J. M. HOCHSTETLER  
 #6808  
 IOWA

I hereby certify that this land surveying document was prepared and the related survey work was performed by me or under my direct personal supervision and that I am a duly licensed Land Surveyor under the laws of the State of Iowa.

*J.M. Hochstetler*  
 J.M. HOCHSTETLER  
 License number 6808 Date 9/11/12  
 My license renewal date is December 31, 2013  
 Pages or sheets covered by this seal: 1

- CAPPED IRON ROD (CIR) #6808 SET
- CIR #6808 FOUND
- △ P.K. NAIL SET
- IRON ROD FOUND
- - - EASEMENT LIMITS
- - - EXISTING FENCE
- (M) MEASURED DISTANCE
- (R) RECORDED DISTANCE