



Document 2012 1450

Book 2012 Page 1450 Type 06 043 Pages 1  
Date 5/17/2012 Time 4:09 PM  
Rec Amt \$7.00

INDX  
ANNO  
SCAN  
CHEK

LISA SMITH, COUNTY RECORDER  
MADISON COUNTY IOWA

VANCE & HOCHSTETLER, P.C. CONSULTING ENGINEERS, WINTERSSET, IOWA (515)462-3995

CHARLES T. VANCE, 110 WEST GREEN ST., WINTERSSET, IOWA 50273  
JAMES M. HOCHSTETLER, 110 WEST GREEN ST., WINTERSSET, IOWA 50273

12-565

### UNITED STATES PUBLIC LAND SURVEY CORNER CERTIFICATE

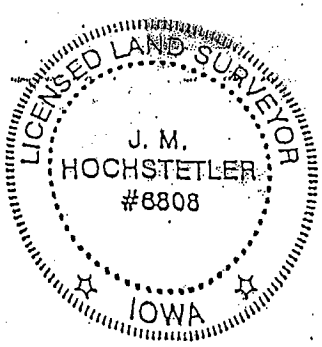
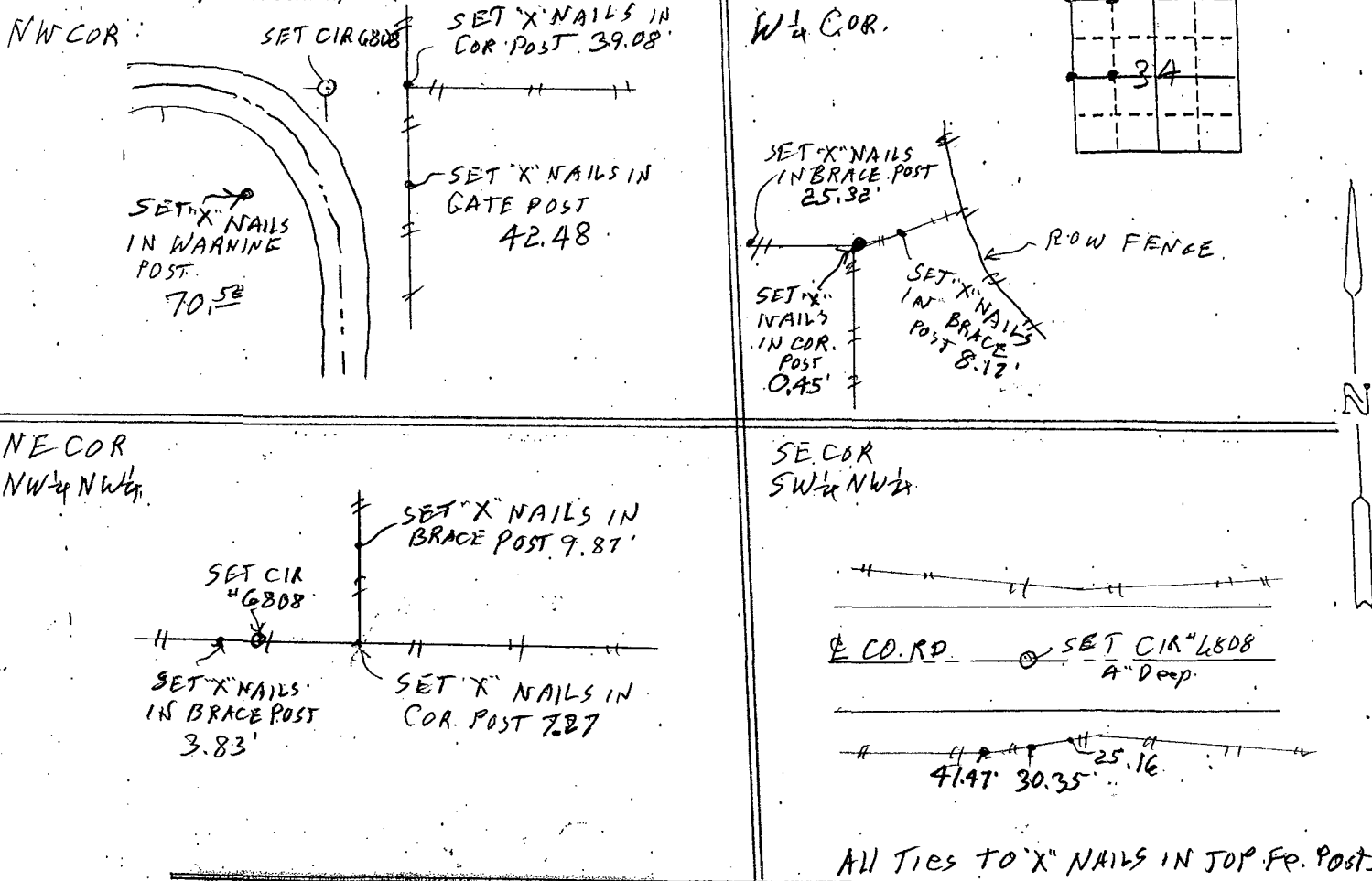
OF  
Land Survey Monuments situated in Section 34, Township 74 N, Range 28 W, of the Fifth Principal Meridian, MADISON County, Iowa.  
Previously recorded in \_\_\_\_\_ in County Recorder's Office.  
(book, page, document number, etc.)

(Show reason for preparing this certificate, the evidence and detailed procedures used in establishing the corner positions and monumentation found or placed.)

Monument Description and Remarks: NW Cor. - Found 60d Nail at location of RR. Spike shown on old road plans. Spike 15" deep & set CIR #6808  
NE COR NW 1/4 NW 1/4 - Set yellow CIR #6808 @ midpoint on line between set NW Cor. & NW 1/4 Cor.  
W 1/4 Cor - Set yellow CIR #6808 @ property line fence corner  
SE Cor SW 1/4 NW 1/4 - Set yellow CIR #6808 @ Co. Rd between set W 1/4 Cor and calculated center.

### PLAN - VIEW

(Show a minimum of three reference ties to durable physical objects, relevant monuments and physical conditions that will enable recovery of the corner.)



I hereby certify that this land surveying document was prepared and the related survey work was performed by me or under my direct personal supervision and that I am a duly licensed Land Surveyor under the laws of the State of Iowa.  
*J.M. Hochstetler*  
J.M. HOCHSTETLER  
License number 6808 Date 5/11/12  
My license renewal date is December 31, 2013  
Pages or sheets covered by this seal: 1

Corners	List Corners to be Indexed Section	Twp	Range
NW COR	34	74N	28W
NE COR	34	74N	28W
NW 1/4 NW 1/4	34	74N	28W
W 1/4 Cor.	34	74N	28W