



Document 2012 1449

Book 2012 Page 1449 Type 06 026 Pages 1

Date 5/17/2012 Time 4:09 PM

Rec Amt \$7.00

INDX ✓
ANNO
SCAN
CHEK

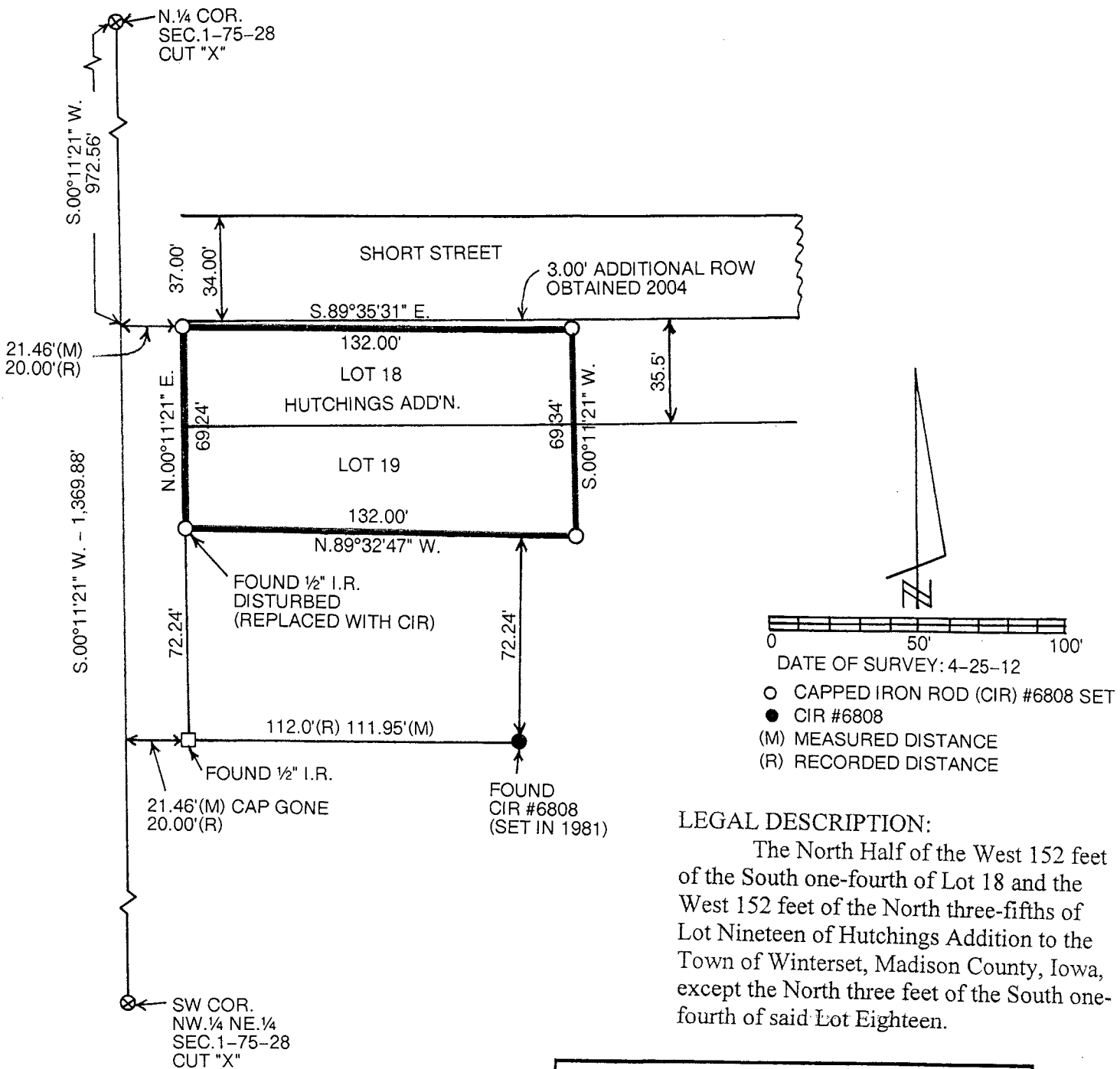
LISA SMITH, COUNTY RECORDER
MADISON COUNTY IOWA

VANCE & HOCHSTETLER, P.C. • CONSULTING ENGINEERS • WINTERSET, IOWA 50273

12-545

CHARLES T. VANCE • 110 WEST GREEN ST., WINTERSET, IOWA • (515) 462-3995
JAMES M HOCHSTETLER • 110 WEST GREEN ST., WINTERSET, IOWA • FAX: (515) 462-9845

PROPERTY LINE RETRACEMENT SURVEY IN LOTS 18 AND 19 OF
HUTCHINGS ADDITION, CITY OF WINTERSET, MADISON COUNTY, IOWA
OWNED BY COREY PATRICK AND KRISTY A. FETCH.



LEGAL DESCRIPTION:

The North Half of the West 152 feet of the South one-fourth of Lot 18 and the West 152 feet of the North three-fifths of Lot Nineteen of Hutchings Addition to the Town of Winterset, Madison County, Iowa, except the North three feet of the South one-fourth of said Lot Eighteen.

LICENSED LAND SURVEYOR

J. M. HOCHSTETLER #6808

IOWA

I hereby certify that this land surveying document was prepared and the related survey work was performed by me or under my direct personal supervision and that I am a duly licensed Land Surveyor under the laws of the State of Iowa.

J. M. Hochstetler

J.M. HOCHSTETLER
License number 6808 Date 5/9/12
My license renewal date is December 31, 2013
Pages or sheets covered by this seal: 5