



Document 2012 1448

Book 2012 Page 1448 Type 06 026 Pages 1

Date 5/17/2012 Time 4:08 PM

Rec Amt \$7.00

INDX ✓
ANNO
SCAN
CHEK

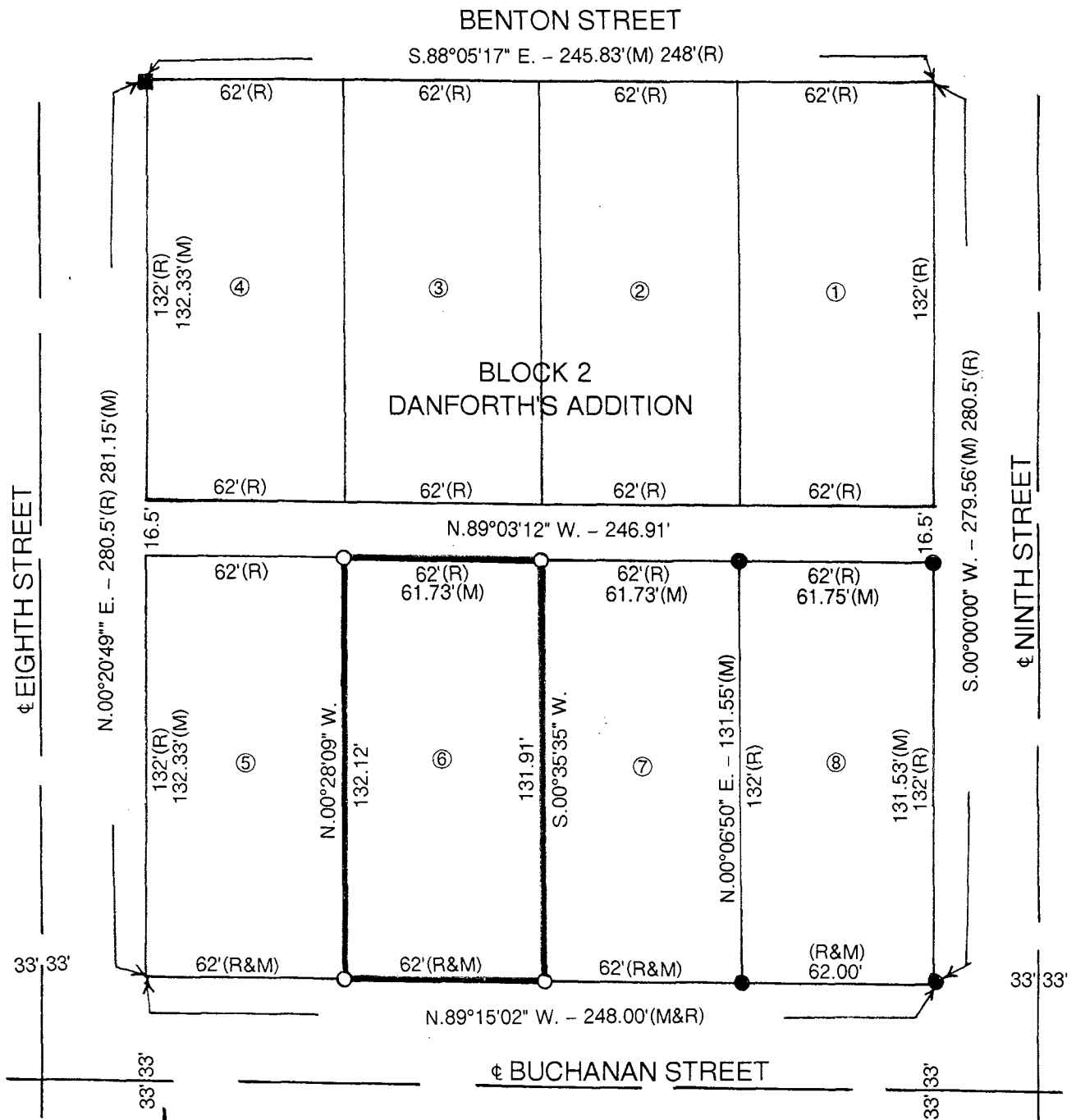
LISA SMITH, COUNTY RECORDER
MADISON COUNTY IOWA

VANCE & HOCHSTETLER, P.C. • CONSULTING ENGINEERS • WINTERSET, IOWA 50273

12-63s

CHARLES T. VANCE • 110 WEST GREEN ST., WINTERSET, IOWA • (515) 462-3995
JAMES M HOCHSTETLER • 110 WEST GREEN ST., WINTERSET, IOWA • FAX: (515) 462-9845

PLAT OF SURVEY FOR JOHN ELLIS GRAY OF LOT 6, BLOCK 2, DANFORTH'S
ADDITION TO THE CITY OF WINTERSET, MADISON COUNTY, IOWA.



- DATE OF SURVEY: 5-10-12
- FOUND CIR #6808 SET
 - SET CIR #6808 FOUND
 - FOUND 5/8" IRON ROD
 - (R): RECORDED DISTANCE
 - (M): MEASURED DISTANCE

LICENSED LAND SURVEYOR

J. M.
HOCHSTETLER
#6808

IOWA

I hereby certify that this land surveying document was prepared and the related survey work was performed by me or under my direct personal supervision and that I am a duly licensed Land Surveyor under the laws of the State of Iowa.

J.M. Hochstetler

J.M. HOCHSTETLER
License number 6808 Date 5/15/12
My license renewal date is December 31, 2013
Pages or sheets covered by this seal: 1