



Document 2012 1447

Book 2012 Page 1447 Type 06 026 Pages 1  
Date 5/17/2012 Time 4:07 PM  
Rec Amt \$7.00

INDX ✓  
ANNO  
SCAN  
CHEK

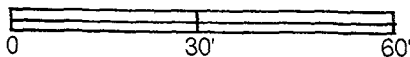
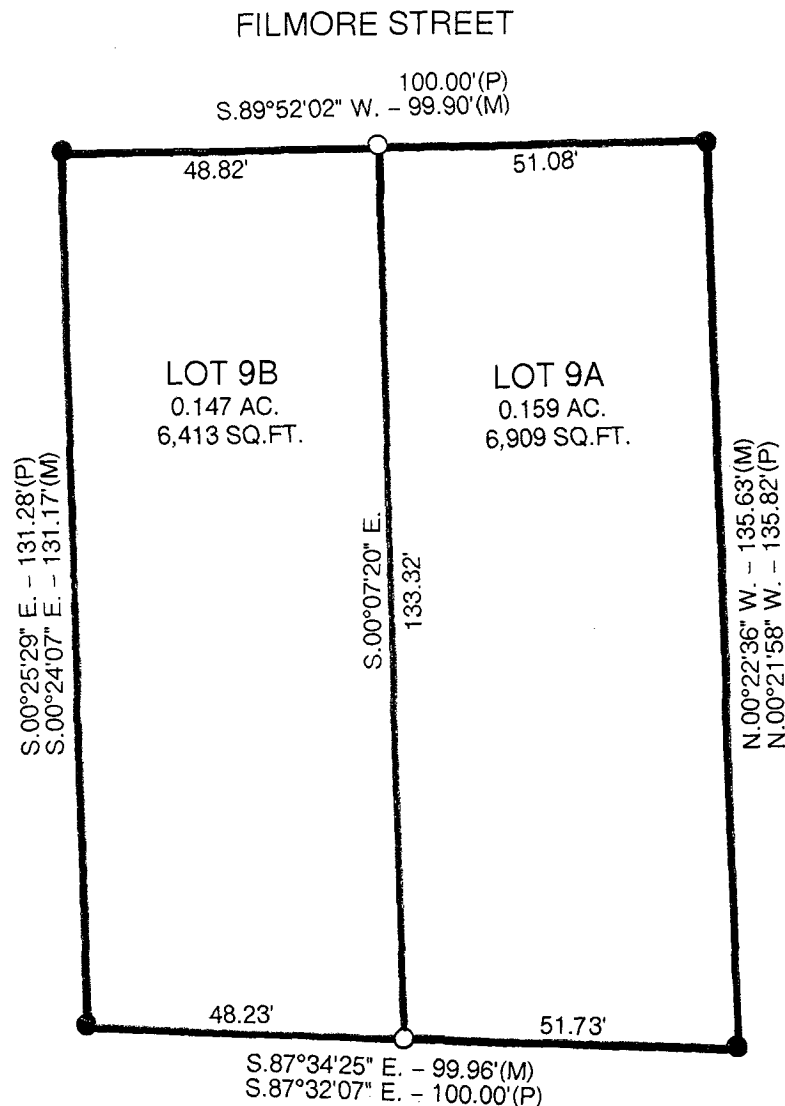
LISA SMITH, COUNTY RECORDER  
MADISON COUNTY IOWA

VANCE & HOCHSTETLER, P.C. • CONSULTING ENGINEERS • WINTERSET, IOWA 50273

12-495

CHARLES T. VANCE • 110 WEST GREEN ST., WINTERSET, IOWA • (515) 462-3995  
JAMES M HOCHSTETLER • 110 WEST GREEN ST., WINTERSET, IOWA • FAX: (515) 462-9845

PLAT OF SURVEY FOR CORKREAN HOMES, LOCATED ON LOT 9 OF CORKREAN & WATTS ADDITION, PLAT NO. 5, CITY OF WINTERSET, MADISON COUNTY, IOWA.



- DATE OF SURVEY: 4-5-12
- CAPPED IRON ROD (CIR) #6808 SET
- CIR #6808 FOUND
- (M) MEASURED DISTANCE
- (P) PLATTED DISTANCE

LEGAL DESCRIPTION:

A subdivision of existing Lot 9, Corkrean & Watts Addition, Plat No. 5, City of Winterset, Madison County, Iowa more particularly described as follows:

LOT 9A:

Beginning at the Northeast Corner of Lot 9, Corkrean & Watts Addition, Plat No. 5, City of Winterset, Madison County, Iowa thence South 89°52'02" West 51.08 feet along the North line of said Lot 9; thence South 00°07'20" East 133.32 feet along the common wall of a duplex building extended to the South line of said Lot 9; thence South 87°34'25" East 51.73 feet to the Southeast Corner of said Lot 9; thence North 00°22'36" West 135.63 feet to the Point of Beginning containing 0.159 acres (6,909 SQ.FT.).

LOT 9B

Beginning at the Northwest Corner of Lot 9, Corkrean & Watts Addition, Plat No. 5, City of Winterset, Madison County, Iowa thence South 00°24'07" East 131.17 feet to the Southwest Corner of said Lot 9; thence South 87°34'25" East 48.23 feet along the South line of said Lot 9; thence North 00°07'20" West 133.32 feet along the common wall of a duplex building extended to the North line of said Lot 9; thence South 89°52'02" West 48.82 feet to the Point of Beginning containing 0.147 acres (6,413 SQ.FT.).

I hereby certify that this land surveying document was prepared and the related survey work was performed by me or under my direct personal supervision and that I am a duly licensed Land Surveyor under the laws of the State of Iowa.

*J.M. Hochstetler*  
J.M. HOCHSTETLER  
License number 6808 Date 4/19/12  
My license renewal date is December 31, 2013  
Pages or sheets covered by this seal: 1

LICENSED LAND SURVEYOR  
J. M. HOCHSTETLER  
#6808  
IOWA