



Document 2012 724

Book 2012 Page 724 Type 06 043 Pages 1  
Date 3/12/2012 Time 10:45 AM  
Rec Amt \$7.00

INDX ✓  
ANNO  
SCAN  
CHEK

LISA SMITH, COUNTY RECORDER  
MADISON COUNTY IOWA

Daniels Land Surveying, 22598 18th Avenue, New Virginia, IA 50210, 641-449-3259

# UNITED STATES PUBLIC LAND CORNER CERTIFICATE OF

Land Survey Monuments situated in Section 19, Township 74 N, Range 26 W, of the 5th P.M., Madison County, Iowa. Previously recorded in n.a. in County Recorders Office. (book, page, document number, etc.)

(Show reason for preparing this certificate, the evidence and detailed procedures used in establishing the corner positions and monumentation found or placed.)

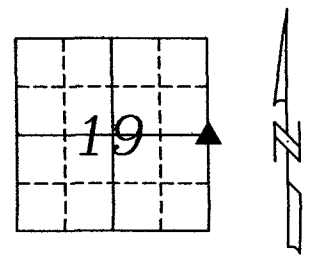
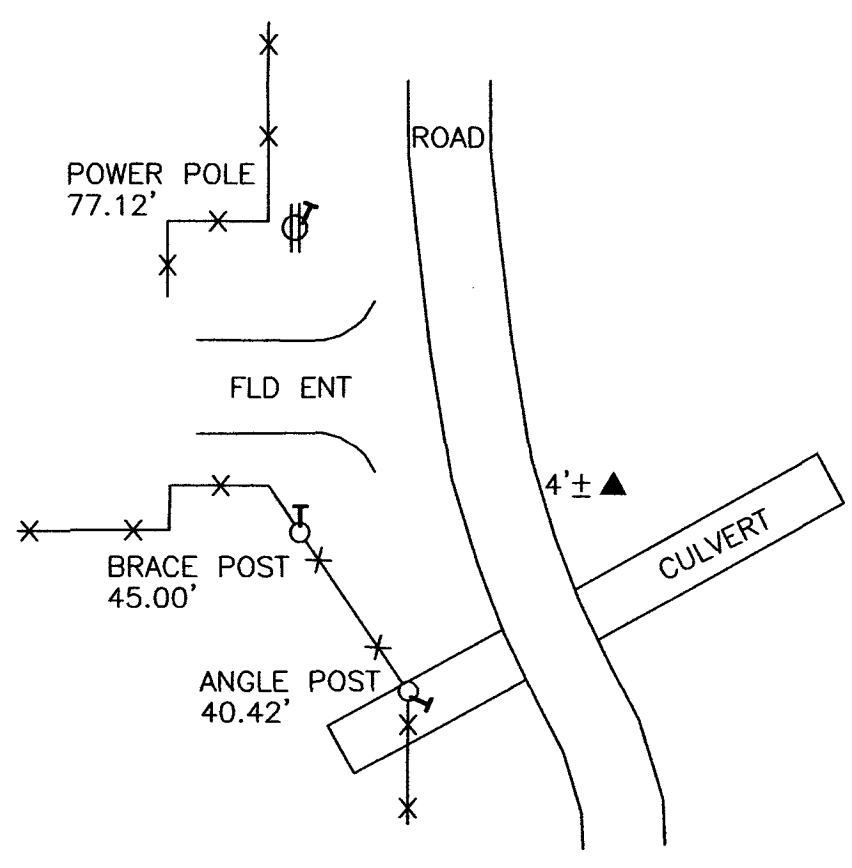
### Monument Description and Remarks:

Monument shown on Cumming Park Plat No. 1 had been removed by County construction of a cross road culvert. Reset 1/2" x 24" red plastic capped rebar, #17532 using above Subdivision Plat.

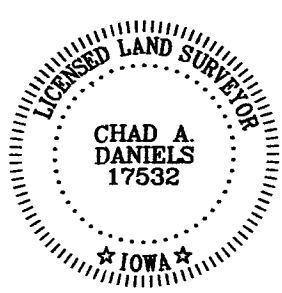
## PLAN VIEW

(Show a minimum of three reference ties to durable physical objects, relevant monuments and physical conditions that will enable recovery of the corner.)

ALL TIES TO 30d SPIKES UNLESS NOTED



E 1/4 CORNER, SECTION 19



I hereby certify that this land surveying document was prepared and the related survey work was performed by me or under my direct personal supervision and that I am a duly licensed Land Surveyor under the laws of the State of Iowa.

Signature: Chad A. Daniels Date: 3/8/12

License number 17532  
My license renewal date is December 31, 2012