



Document 2012 417

Book 2012 Page 417 Type 06 043 Pages 1
Date 2/10/2012 Time 3:47 PM
Rec Amt \$7.00

INDEX
ANNO
SCAN
CHEK

LISA SMITH, COUNTY RECORDER
MADISON COUNTY IOWA

VANCE & HOCHSTETLER, P.C. CONSULTING ENGINEERS, WINTERSSET, IOWA (515)462-3995

CHARLES T. VANCE, 110 WEST GREEN ST., WINTERSSET, IOWA 50273
JAMES M. HOCHSTETLER, 110 WEST GREEN ST., WINTERSSET, IOWA 50273

12-25

UNITED STATES PUBLIC LAND SURVEY CORNER CERTIFICATE

Land Survey Monuments situated in Section 13, Township 75 N, Range 26 W, of the Fifth Principal Meridian, MADISON County, Iowa. Previously recorded in _____ in County Recorder's Office.
(book, page, document number, etc.)

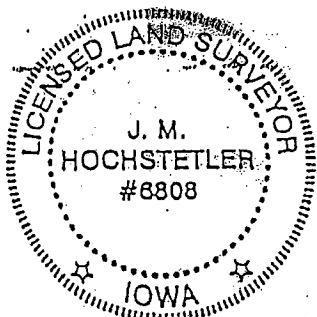
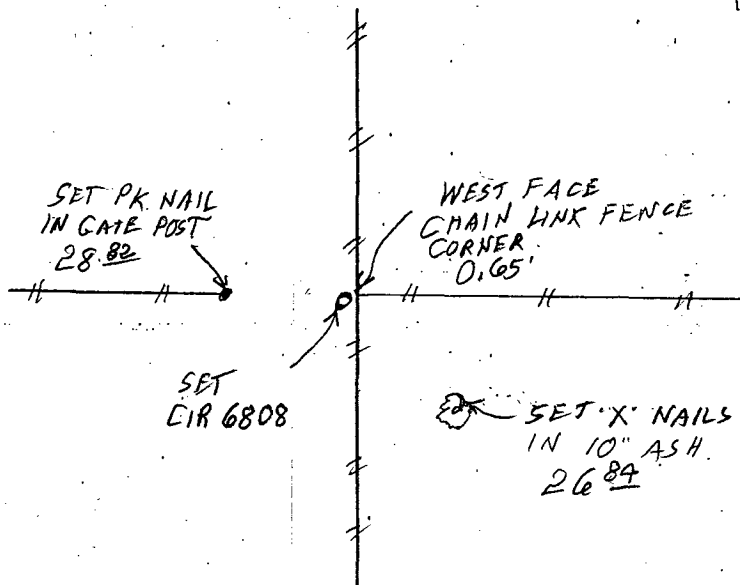
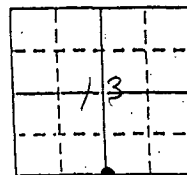
(Show reason for preparing this certificate, the evidence and detailed procedures used in establishing the corner positions and monumentation found or placed.)

Monument Description and Remarks: S $\frac{1}{4}$ Cor. - Set yellow CIR #6808 from measurements and angles on old surveys to this point. Corner was originally a yellow CIR #5041 set by Tom Vance on prior surveys in the area. The area has been graded and fence installed which evidently destroyed the pin.

PLAN - VIEW

(Show a minimum of three reference ties to durable physical objects, relevant monuments and physical conditions that will enable recovery of the corner.)

S $\frac{1}{4}$ COR



I hereby certify that this land surveying document was prepared and the related survey work was performed by me or under my direct personal supervision and that I am a duly licensed Land Surveyor under the laws of the State of Iowa.

J. M. Hochstetler
J.M. HOCHSTETLER
License number 6808 Date 11/31/12
My license renewal date is December 31 2013
Pages or sheets covered by this seal: 1

| Corners | Section | Twp | Range |
|----------------------|---------|------|-------|
| S $\frac{1}{4}$ COR. | 13 | 75 N | 26 W |