



Document 2012 149

Book 2012 Page 149 Type 06 043 Pages 1

Date 1/18/2012 Time 9:28 AM

Rec Amt \$.00

INDX
ANNO
SCAN
CHEK

LISA SMITH, COUNTY RECORDER
MADISON COUNTY IOWA

WARREN COUNTY ENGINEER, 301 N. Buxton, Suite 211 Indianola, IA 50125 (515)961-1050

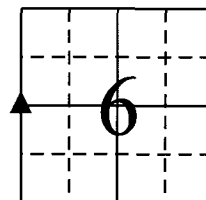
UNITED STATES PUBLIC LAND SURVEY CORNER CERTIFICATE OF

Land Survey Monuments situated in Section 6, Township 77 North, Range 25 West, of
the Fifth Principal Meridian, Warren County, Iowa.

Previously recorded in N/A in the Warren County Engineer's Office.

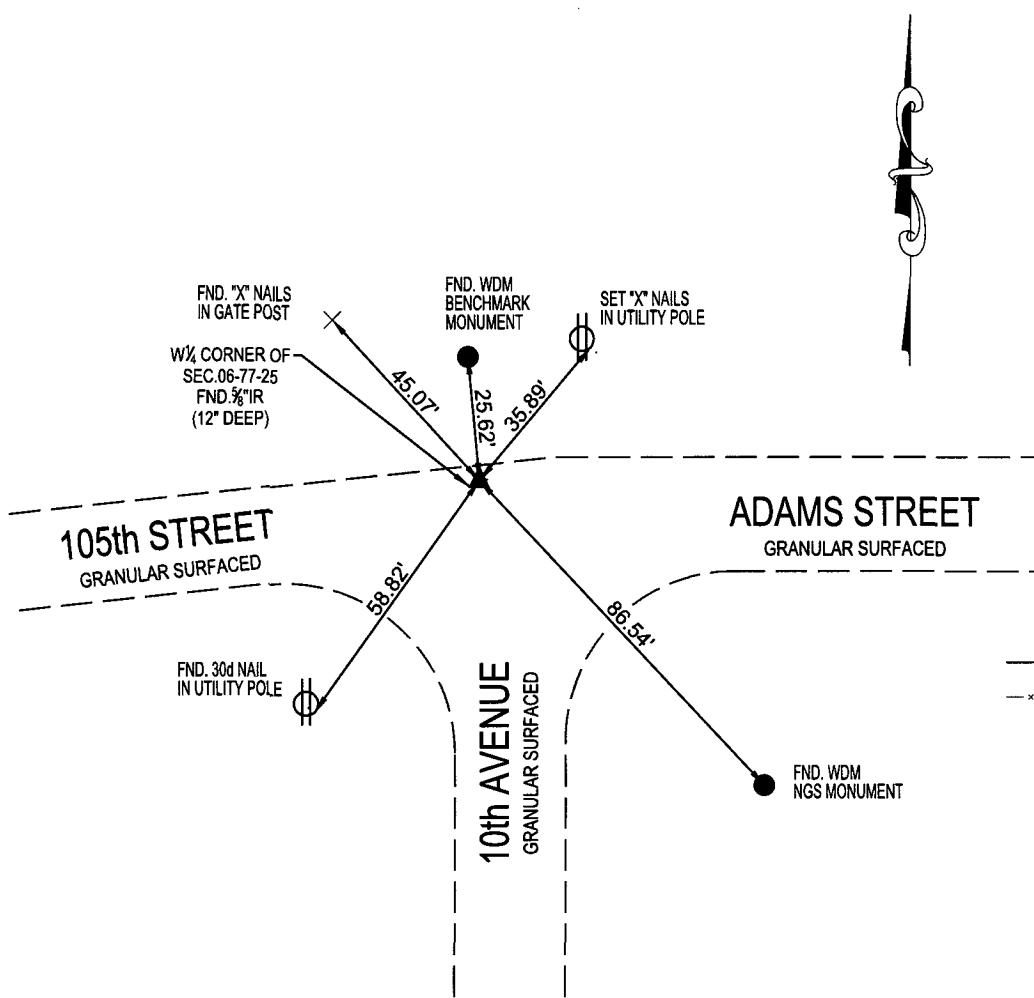
Monument Description and Remarks: FOUND 1/2" IRON ROD RECORDED IN BOOK 2, PAGE 34 OF THE WARREN COUNTY ENGINEER'S OFFICE. ORIGINAL TIES WERE NOT FOUND, SET NEW CORNER TIES AND CHECK MEASUREMENT FROM THE SW CORNER OF SECTION 6-T77N-R25W - 2649.93'(M) AND 2649.4'(R) FROM THE ORIGINAL IDOT CORNER TIES FOR THE INTERSTATE 35 PROJECT.

PLAN - VIEW



LEGEND

- ▲ FOUND SECTION CORNER MONUMENT
- FOUND MONUMENT
- I FOUND CHISELED "X" IN RIGHT-OF-WAY RAIL
- ⊗ FND "X" NAILS IN FENCE POST
- △ SECTION CORNER SET 3/8" I.R. W/RED CAP #19968 (UNLESS NOTED)
- SET 3/8" I.R. W/RED CAP #19968
- × SET "X" NAILS IN FENCE POST
- I.P. IRON PIPE
- I.R. IRON ROD (REROD)
- (M) MEASURED DIMENSION
- (R) RECORDED DIMENSION
- SECTION LINE
- x- FENCE LINE



W 1/4 CORNER, SEC.6 - T77N - R25W

IOWA SOUTH STATE PLANE COORDINATE
N=548,408.8632
E=1,560,816.3790



I hereby certify that this land surveying document was prepared and the related survey work was performed by me or under my direct personal supervision and that I am a duly licensed Land Surveyor under the laws of the State of Iowa.

Signature: Matthew J. Thomas Date: 12-28-2011

Name: (Printed or typed) Matthew J. Thomas

License Number 19968

My license renewal date is December 31, 2013.

Pages or sheets covered by this seal: 1 of 1

Corners to be Indexed

Corners Section-Township-Range
W 1/4 CORNER, SEC.6-T77N-R25W