



Document 2012 148

Book 2012 Page 148 Type 06 043 Pages 1

Date 1/18/2012 Time 9:27 AM

Rec Amt \$.00

INDX
ANNO
SCAN
CHEK

LISA SMITH, COUNTY RECORDER
MADISON COUNTY IOWA

WARREN COUNTY ENGINEER, 301 N. Buxton, Suite 211 Indianola, IA 50125 (515)961-1050

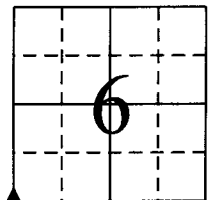
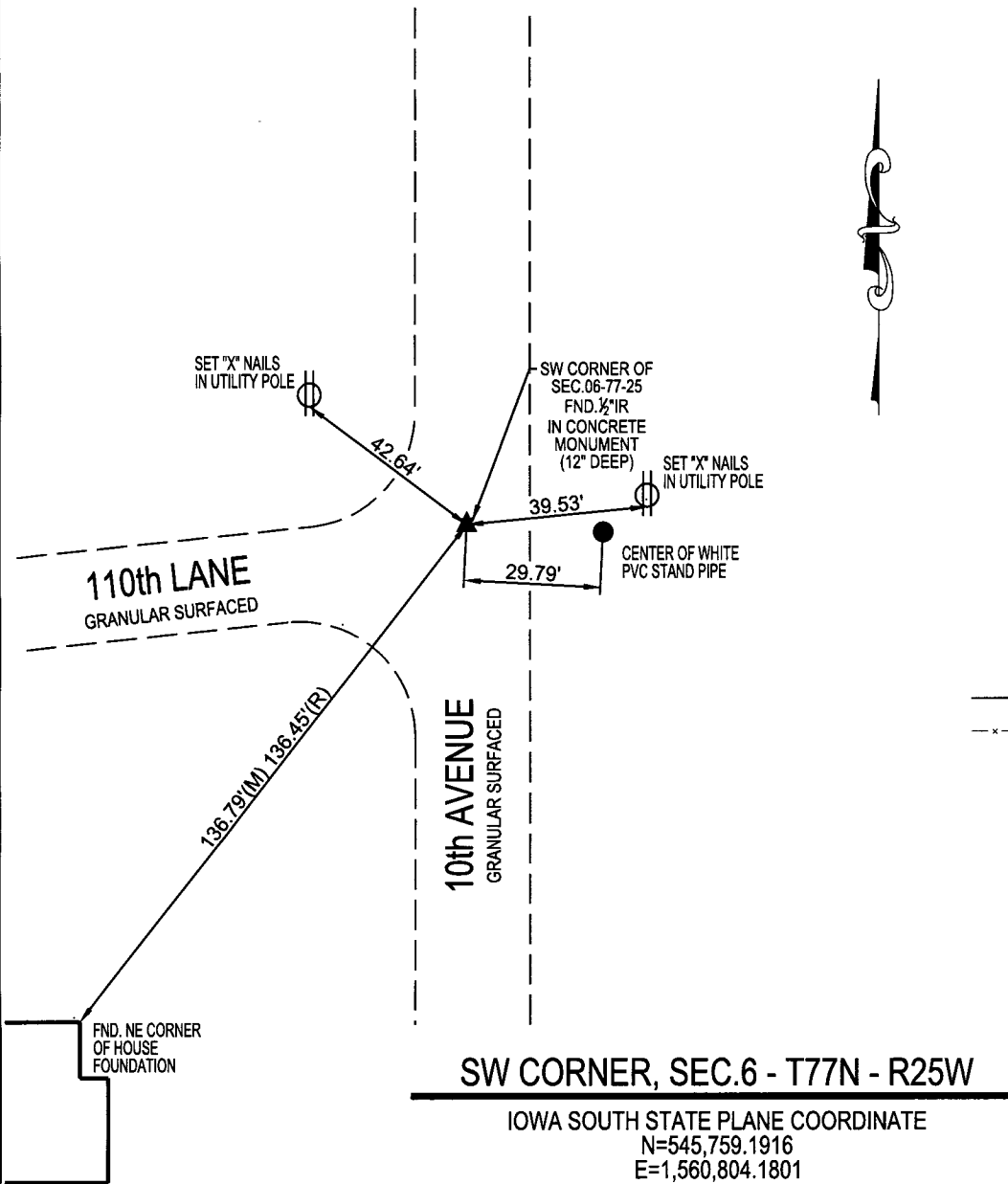
UNITED STATES PUBLIC LAND SURVEY CORNER CERTIFICATE OF

Land Survey Monuments situated in Section 6, Township 77 North, Range 25 West, of
the Fifth Principal Meridian, Warren County, Iowa.

Previously recorded in BK 1, PG 252 in the Warren County Engineer's Office.

Monument Description and Remarks: FOUND 1/2" IRON ROD IN CONCRETE MONUMENT AS PREVIOUSLY RECORDED IN BOOK 1,
PAGE 252 OF THE WARREN COUNTY RECORDER'S OFFICE. ORIGINAL TIES WERE NOT FOUND. SET NEW CORNER TIES ALONG WITH
AN ORIGINAL TIE TO THE HOUSE AS SHOWN IN THE ORIGINAL IDOT CORNER TIES FOR INTERSTATE I-35 PROJECT.

PLAN - VIEW



LEGEND

- ▲ FOUND SECTION CORNER MONUMENT
- FOUND MONUMENT
- I FOUND CHISELED "X" IN RIGHT-OF-WAY RAIL
- ⊗ FND "X" NAILS IN FENCE POST
- △ SECTION CORNER SET 3/8" I.R. W/RED CAP #19968 (UNLESS NOTED)
- SET 3/8" I.R. W/RED CAP #19968
- × SET "X" NAILS IN FENCE POST
- I.P. IRON PIPE
- I.R. IRON ROD (REROD)
- (M) MEASURED DIMENSION
- (R) RECORDED DIMENSION
- SECTION LINE
- x- FENCE LINE



I hereby certify that this land surveying document was prepared and the related survey work was performed by me or under my direct personal supervision and that I am a duly licensed Land Surveyor under the laws of the State of Iowa.

Signature: Matthew J. Thomas Date: 12-27-2011

Name: (Printed or typed) Matthew J. Thomas
License Number 19968

My license renewal date is December 31, 2013.
Pages or sheets covered by this seal: 1 of 1

Corners to be Indexed

Corners Section-Township-Range
SW CORNER, SEC. 6-T77N-R25W