



Document 2012 146

Book 2012 Page 146 Type 06 043 Pages 1
Date 1/18/2012 Time 9:25 AM
Rec Amt \$.00

INDX ✓
ANNO ✓
SCAN ✓
CHEK

LISA SMITH, COUNTY RECORDER
MADISON COUNTY IOWA

Prepared By: Michael James Hackett, Madison County Engineer's Office, 1105 E. Court Ave., Winterset, Ia. 50273, Tel. (515) 462-1136

UNITED STATES PUBLIC LAND SURVEY CORNER CERTIFICATE OF

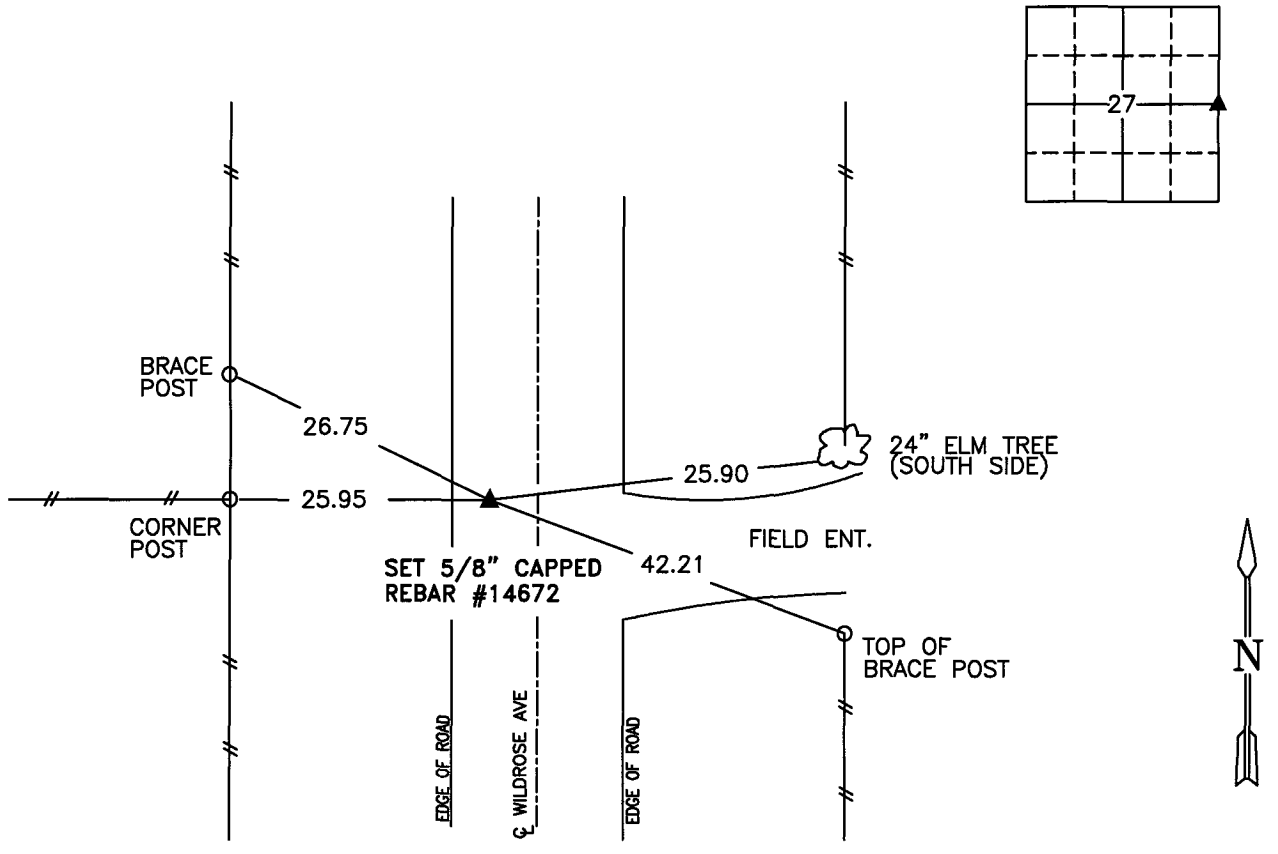
Land Survey Monuments situated in Section 27, Township 76 N, Range 26 W, of the Fifth Principal Meridian, Madison County, Iowa.
Previously recorded in Book 1, Page 624 in County Recorder's Office.
(book, page, document number, etc.)

(Show reason for preparing this certificate, the evidence and detailed procedures used in establishing the corner positions and monumentation found or placed.)

Monument Description and Remarks: Previous monument disturbed during county road maintenance. Set 5/8" capped rebar #14672 approximately 12" deep. Established the corner position by using previous ties.

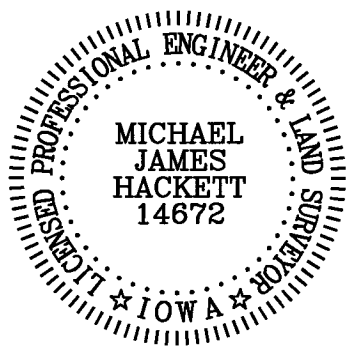
PLAN VIEW

(Show a minimum of three reference ties to durable physical objects, relevant monuments and physical conditions that will enable recovery of the corner.)



SE. COR., NE. 1/4 SEC. 27

NOTE: ALL TIES TO "X" NAILS UNLESS NOTED



I hereby certify that this land surveying document was prepared and the related survey work was performed by me or under my direct personal supervision and that I am a duly Licensed Land Surveyor under the laws of the State of Iowa.
Signed [Signature] Date 1-18-2012
Michael James Hackett
Iowa license number 14672.
My license renewal date is 12/31/2012.
Pages covered by this seal: 1.