

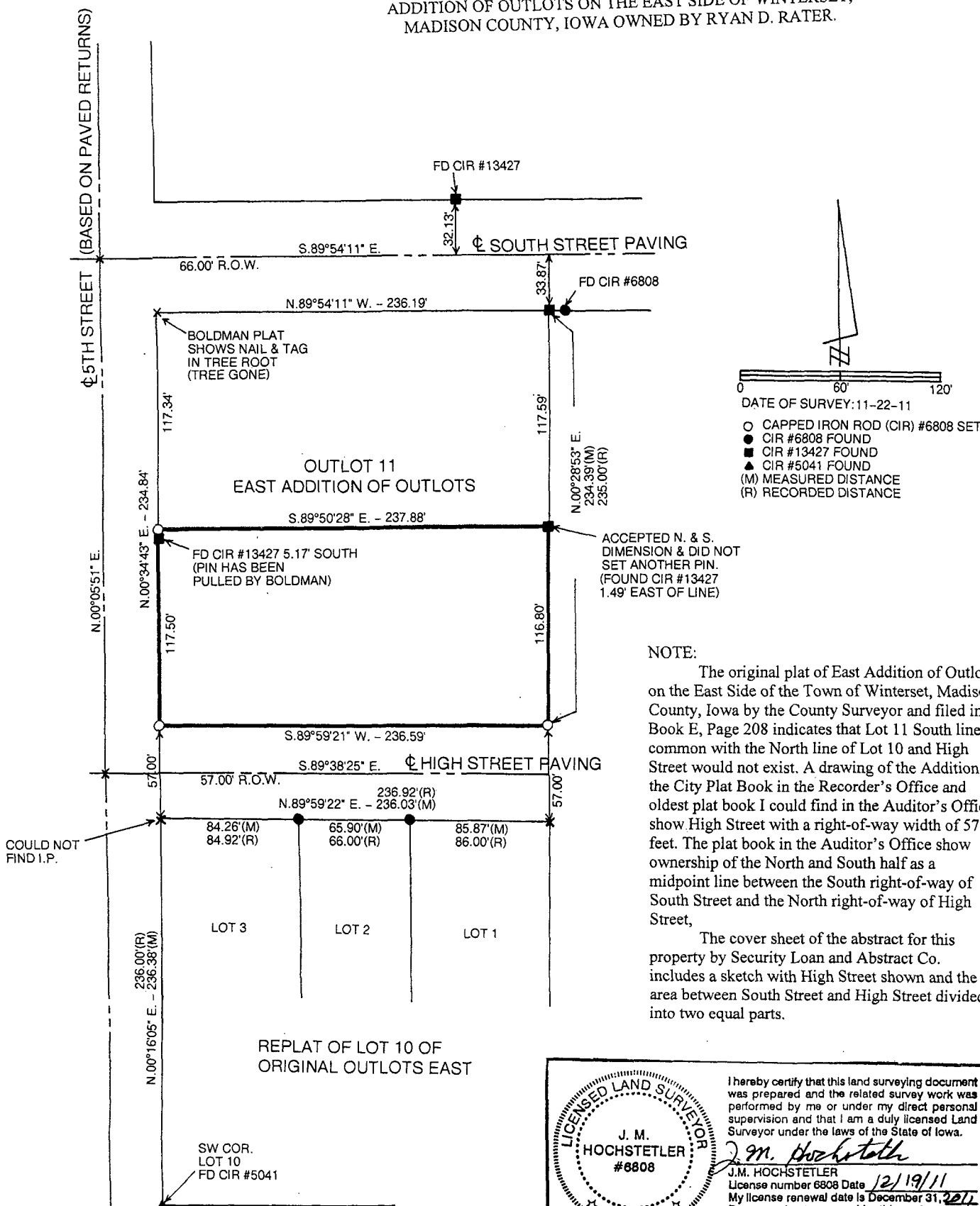
INDX ✓
ANNO
SCAN
CHEK

LISA SMITH, COUNTY RECORDER
MADISON COUNTY IOWA

VANCE & HOCHSTETLER, P.C. • CONSULTING ENGINEERS • WINTERSET, IOWA 50273

CHARLES T. VANCE • 110 WEST GREEN ST., WINTERSET, IOWA • (515) 462-3995
JAMES M HOCHSTETLER • 110 WEST GREEN ST., WINTERSET, IOWA • FAX: (515) 462-9845

PLAT OF SURVEY OF SOUTH HALF OF OUTLOT ELEVEN OF EAST
ADDITION OF OUTLOTS ON THE EAST SIDE OF WINTERSET,
MADISON COUNTY, IOWA OWNED BY RYAN D. RATER.



NOTE:
The original plat of East Addition of Outlots on the East Side of the Town of Winterset, Madison County, Iowa by the County Surveyor and filed in Book E, Page 208 indicates that Lot 11 South line is common with the North line of Lot 10 and High Street would not exist. A drawing of the Addition in the City Plat Book in the Recorder's Office and oldest plat book I could find in the Auditor's Office show High Street with a right-of-way width of 57 feet. The plat book in the Auditor's Office show ownership of the North and South half as a midpoint line between the South right-of-way of South Street and the North right-of-way of High Street,

The cover sheet of the abstract for this property by Security Loan and Abstract Co. includes a sketch with High Street shown and the area between South Street and High Street divided into two equal parts.

REPLAT OF LOT 10 OF ORIGINAL OUTLOTS EAST

SW COR. LOT 10 FD CIR #5041

COULD NOT FIND I.P.

DATE OF SURVEY: 11-22-11

○ CAPPED IRON ROD (CIR) #6808 SET
● CIR #6808 FOUND
● CIR #13427 FOUND
▲ CIR #5041 FOUND
(M) MEASURED DISTANCE
(R) RECORDED DISTANCE

LICENSED LAND SURVEYOR
J. M. HOCHSTETLER #6808
IOWA

I hereby certify that this land surveying document was prepared and the related survey work was performed by me or under my direct personal supervision and that I am a duly licensed Land Surveyor under the laws of the State of Iowa.

J.M. Hochstetler
J.M. HOCHSTETLER
License number 6808 Date 12/19/11
My license renewal date is December 31, 2011
Pages or sheets covered by this seal: 1