



Document 2011 2724

Book 2011 Page 2724 Type 06 043 Pages 1
Date 10/14/2011 Time 8:06 AM
Rec Amt \$7.00

INDX
ANNO
SCAN
CHEK

LISA SMITH, COUNTY RECORDER
MADISON COUNTY IOWA

VANCE & HOCHSTETLER, P.C. CONSULTING ENGINEERS, WINTERSSET, IOWA (515)462-3995

CHARLES T. VANCE, 110 WEST GREEN ST., WINTERSSET, IOWA 50273
JAMES M. HOCHSTETLER, 110 WEST GREEN ST., WINTERSSET, IOWA 50273

11-1215

UNITED STATES PUBLIC LAND SURVEY CORNER CERTIFICATE

OF

Land Survey Monuments situated in Section 35, Township 75 N, Range 27 W, of the Fifth Principal Meridian, MADISON County, Iowa.
Previously recorded in _____ in County Recorder's Office.

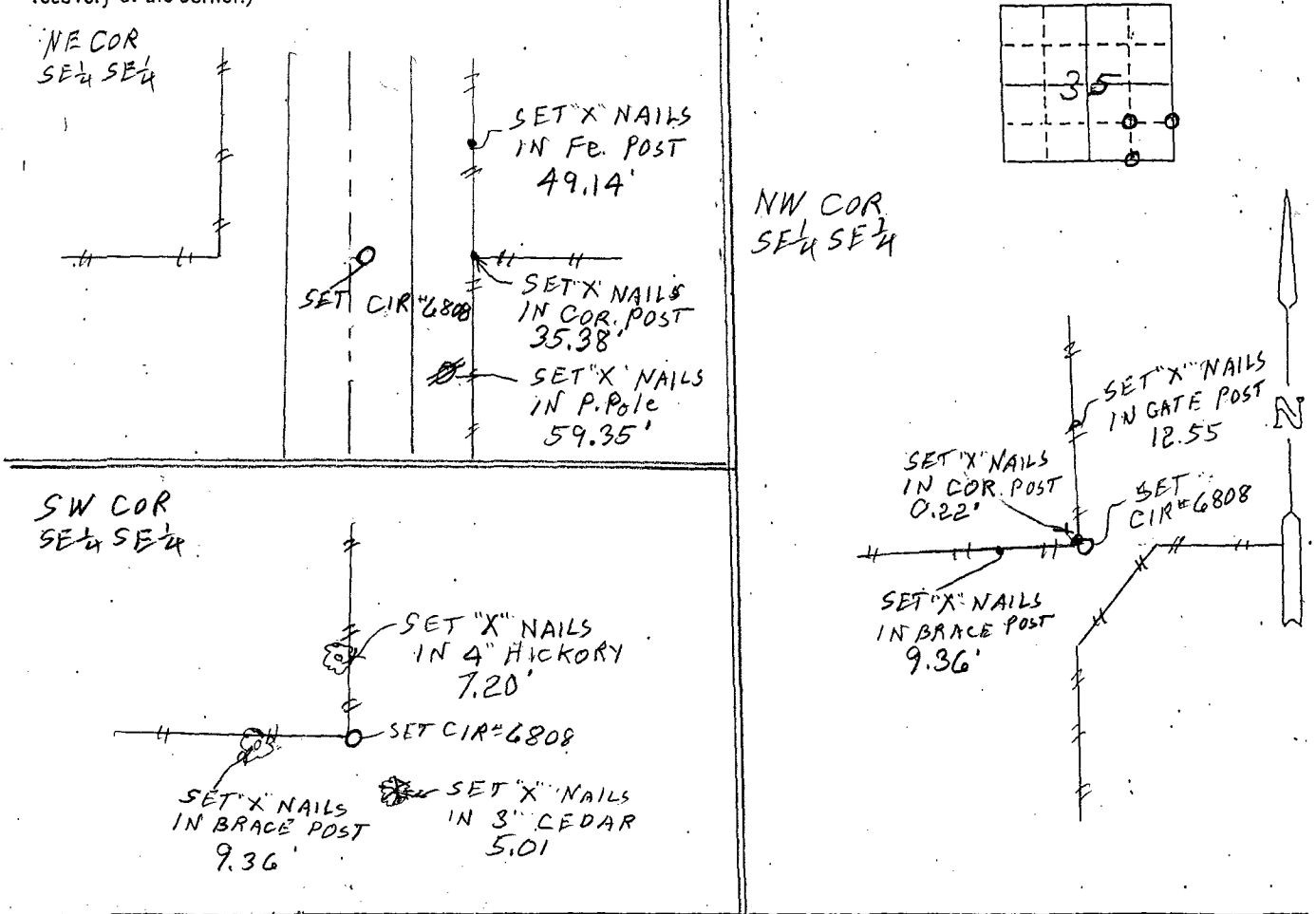
(book, page, document number, etc.)

(Show reason for preparing this certificate, the evidence and detailed procedures used in establishing the corner positions and monumentation found or placed.)

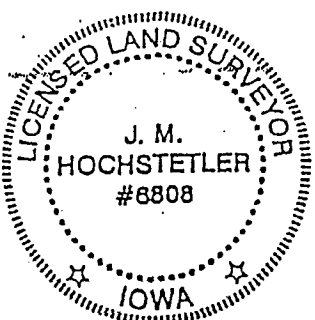
Monument Description and Remarks: NE COR SE 1/4 SE 1/4 - Set yellow CIR #6808 at midpoint on line between found SE COR & E 1/4 Cor.
SW COR SE 1/4 SE 1/4 - Set yellow CIR #6808 at old property line fence corner to North and West.
NW Cor. SE 1/4 SE 1/4 - Set yellow CIR #6808 at old property line fence intersection all four ways.

PLAN - VIEW

(Show a minimum of three reference ties to durable physical objects, relevant monuments and physical conditions that will enable recovery of the corner.)



Corners	List Corners to be Indexed Section	Twp	Range
NE COR SE 1/4 SE 1/4	35	75 N	27 W
SW COR SE 1/4 SE 1/4	35	75 N	27 W
NW COR SE 1/4 SE 1/4	35	75 N	27 W



I hereby certify that this land surveying document was prepared and the related survey work was performed by me or under my direct personal supervision and that I am a duly licensed Land Surveyor under the laws of the State of Iowa.
J. M. Hochstetler
J.M. HOCHSTETLER
License number 8808 Date 10/15/11
My license renewal date is December 31, 2011
Pages or sheets covered by this seal: 1