

REC \$ 5.00  
 AUD \$  
 FILE \$ 1.00

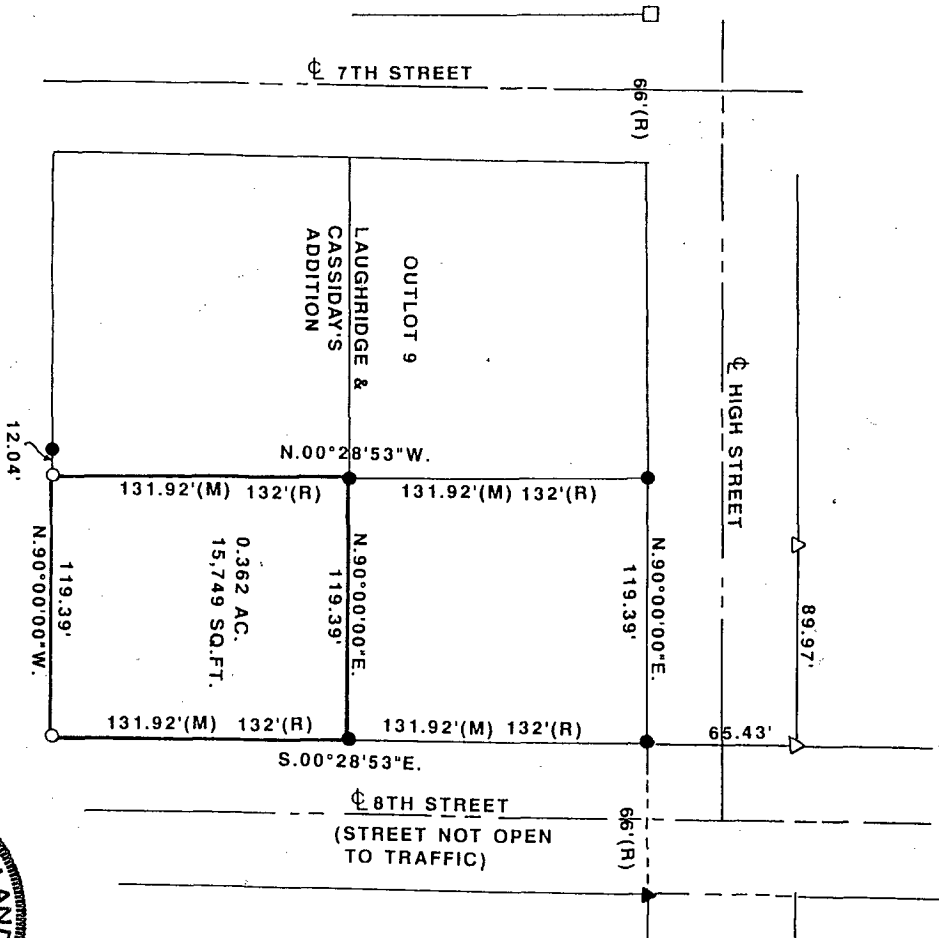
FILED NO. 004267  
 BOOK 2 PAGE 445

2000 MAY 12 PM 4:00

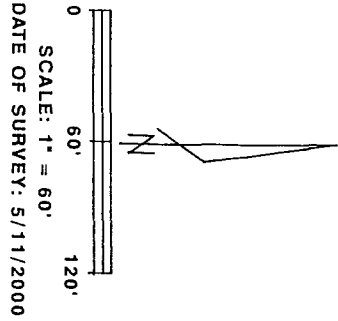
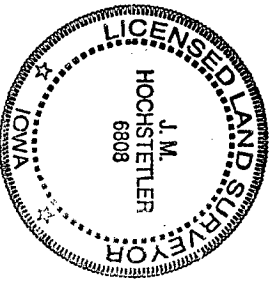
COMPUTER ✓  
 RECORDED ✓  
 COMPARED ✓

MICHELLE UTSLER  
 RECORDER  
 MADISON COUNTY, IOWA

VANCE & HOCHSTETLER, P.C. CONSULTING ENGINEERS, WINTERSSET, IOWA (515) 462-3995  
 CHARLES T. VANCE, 110 WEST GREEN ST., WINTERSSET, IOWA 50273  
 JAMES M HOCHSTETLER, 110 WEST GREEN ST., WINTERSSET, IOWA 50273



PLAT OF SURVEY FOR SYLVIA A. GILLILAND OF THE EAST 119.39 FEET OF THE SOUTH HALF OF OUTLOT 9 OF LAUGHRIDGE & CASSIDAY'S ADDITION TO THE CITY OF WINTERSSET, MADISON COUNTY, IOWA.



- CIR # 6808 SET
- △ CIR # 5041 FOUND
- CIR # 6808 FOUND
- CIR # ? FOUND
- ▲ 1/2" IRON ROD FOUND
- (R) RECORDED DIMENSION
- (M) MEASURED DIMENSION

I hereby certify that this land surveying document was prepared and the related survey work was performed by me or under my direct personal supervision and that I am a duly licensed Land Surveyor under the laws of the State of Iowa.

*J.M. Hochstetler*  
 J.M. HOCHSTETLER  
 License number 6808 Date 5/12/2000  
 My license renewal date is December 31, 2001  
 Pages or sheets covered by this seal: 1