

REC \$ 5.00

AUD \$

R.M.F. \$ 1.00

COMPUTER ✓

RECORDED ✓

COMPARED ✓

FILED NO. 001215

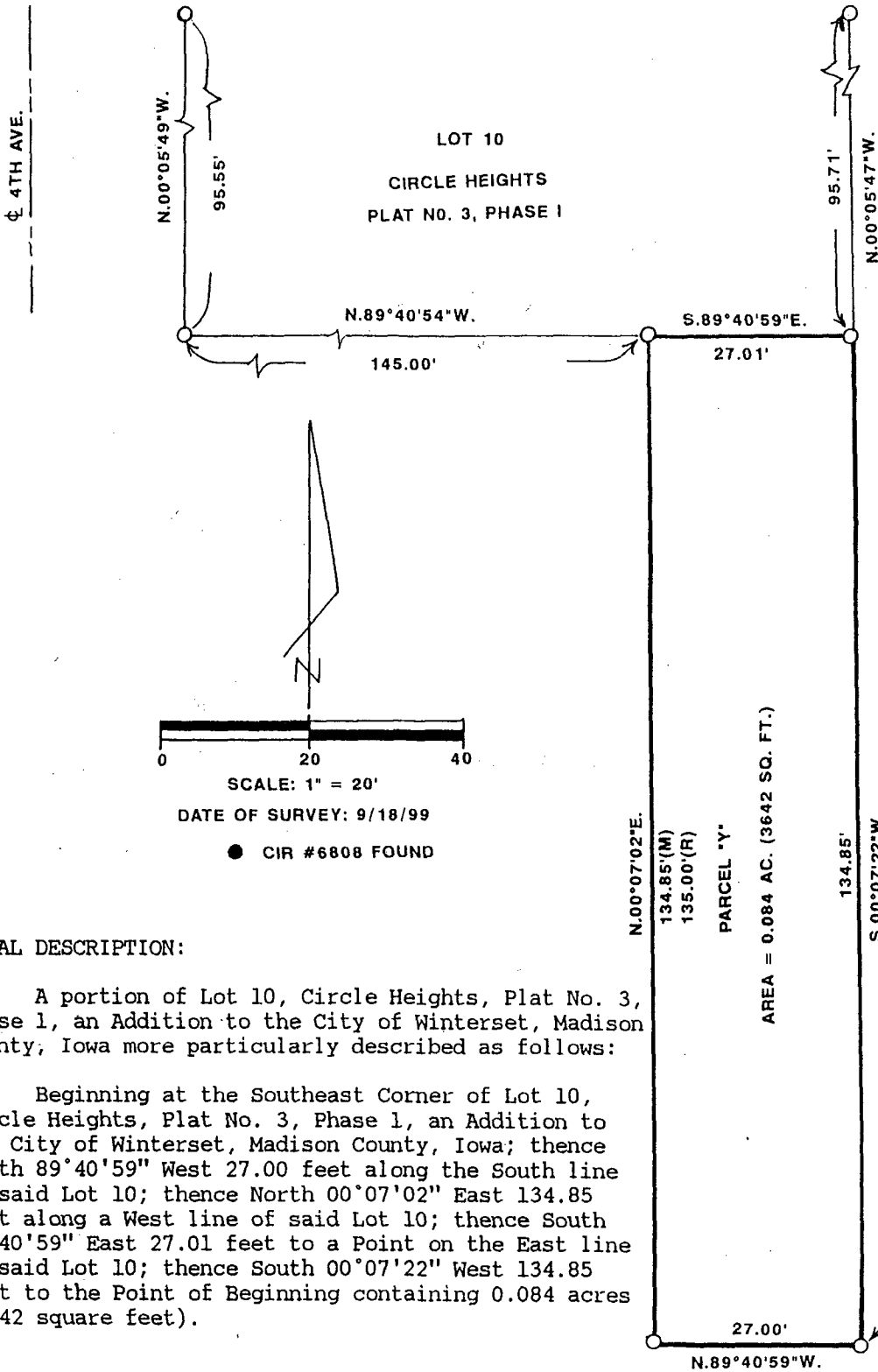
BOOK 2 PAGE 417

99 SEP 21 PM 3:27

MICHELLE UTSLER
RECORDER
MADISON COUNTY, IOWA

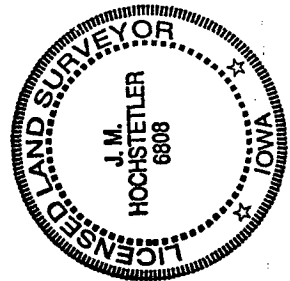
VANCE & HOCHSTETLER, P.C. CONSULTING ENGINEERS, WINTERSET, IOWA (515) 462-3995
CHARLES T. VANCE, 110 WEST GREEN ST., WINTERSET, IOWA 50273
JAMES M HOCHSTETLER, 110 WEST GREEN ST., WINTERSET, IOWA 50273

PLAT OF SURVEY OF A PORTION OF LOT 10, CIRCLE HEIGHTS
PLAT NO. 3, PHASE I, AN ADDITION TO THE CITY OF WINTERSET,
MADISON COUNTY, IOWA, OWNED BY RICHARD ALLEN STRICKLER, JR.
AND JENNIFER KATE STRICKLER.



I hereby certify that this land surveying document was prepared and the related survey work was performed by me or under my direct personal supervision and that I am a duly licensed Land Surveyor under the laws of the State of Iowa.

J.M. Hochstetler
J.M. HOCHSTETLER
License number 6808 Date 9/21/99
My license renewal date is December 31, 1999.
Pages or sheets covered by this seal: 1



LEGAL DESCRIPTION:

A portion of Lot 10, Circle Heights, Plat No. 3, Phase 1, an Addition to the City of Winterset, Madison County, Iowa more particularly described as follows:

Beginning at the Southeast Corner of Lot 10, Circle Heights, Plat No. 3, Phase 1, an Addition to the City of Winterset, Madison County, Iowa; thence North 89°40'59" West 27.00 feet along the South line of said Lot 10; thence North 00°07'02" East 134.85 feet along a West line of said Lot 10; thence South 89°40'59" East 27.01 feet to a Point on the East line of said Lot 10; thence South 00°07'22" West 134.85 feet to the Point of Beginning containing 0.084 acres (3642 square feet).