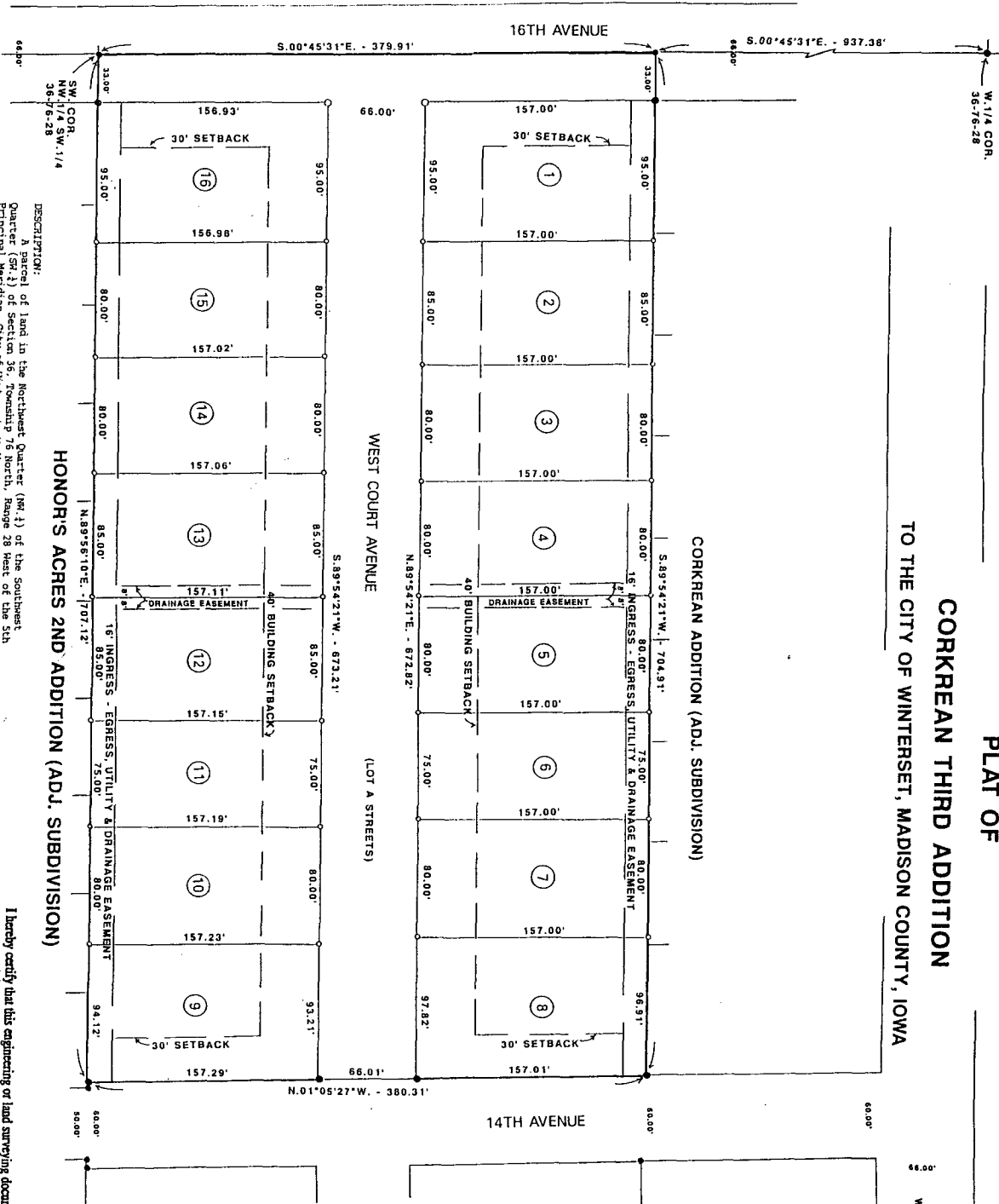


99 APR 28 PM 1:11

MICHELLE UTSLER
RECORDER

VANCE & HOCHSTETLER, P.C., CONSULTING ENGINEERS, WINTERSSET, IOWA (515) 462-0898
CHARLES T. VANCE, 110 WEST GREEN ST., WINTERSSET, IOWA 50273
JAMES M HOCHSTETLER, 110 WEST GREEN ST., WINTERSSET, IOWA 50273



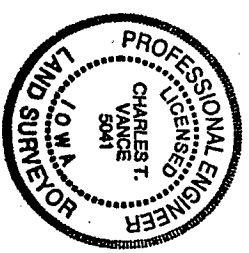
PLAT OF
CORKREAN THIRD ADDITION
TO THE CITY OF WINTERSSET, MADISON COUNTY, IOWA

DESCRIPTION:
A parcel of land in the Northwest Quarter (NW 1/4) of the Southeast Quarter (SW 1/4) of Section 36, Township 76 North, Range 28 West of the 5th Principal Meridian, City of Winterset, Madison County, Iowa, more particularly described as follows:
Beginning at the southeast corner of the NW 1/4 of Section 36, 77th N., R28th W., 5th P.M., Madison County, Iowa; thence along the South line of said NW 1/4 of the SW 1/4, North 89°54'21" West, 380.31 feet to the South line of said NW 1/4 of the SW 1/4; thence along said South line, South 89°54'21" West, 704.91 feet to the West line of said NW 1/4 of the SW 1/4; thence along said West line, South 00°45'31" East, 319.91 feet to the point of beginning. Said parcel of land contains 6.180 Acres.

NOTE: The North line of the SW 1/4 of Section 36, 77th N., R28th W. of the 5th P.M., is assumed to bear due East and West.

I hereby certify that this engineering or land surveying document was prepared and the related survey work was performed by me or under my direct personal supervision and that I am a duly licensed Professional Engineer and Land Surveyor under the laws of the State of Iowa.
Charles T. Vance
Date: 27 April 1999
License number: 5041
My license renewal date is December 31, 1999.
Fees or sheets covered by this seal:

FINAL PLAT
CORKREAN 3RD ADDITION
DEVELOPER: PAT CORKREAN 719 N. 8TH AVENUE WINTERSSET, IOWA 50273
VANCE & HOCHSTETLER, P.C. CONSULTING ENGINEERS 710 WEST GREEN STREET WINTERSSET, IOWA 50273



- FOUND 1/2" IRON RODS
- SET C.I.R. #5041
- Ⓢ INDICATES LOT NUMBER

