

FOR DEDICATION,
RESOLUTION &
CERTIFICATES SEE
DEED RECORD 63-398

FILED NO. 1041-1

BOOK 2 PAGE 412

99 SEP 10 AM 9:29

MICHELLE UTSLER
RECORDER
MADISON COUNTY, IOWA

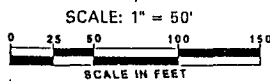
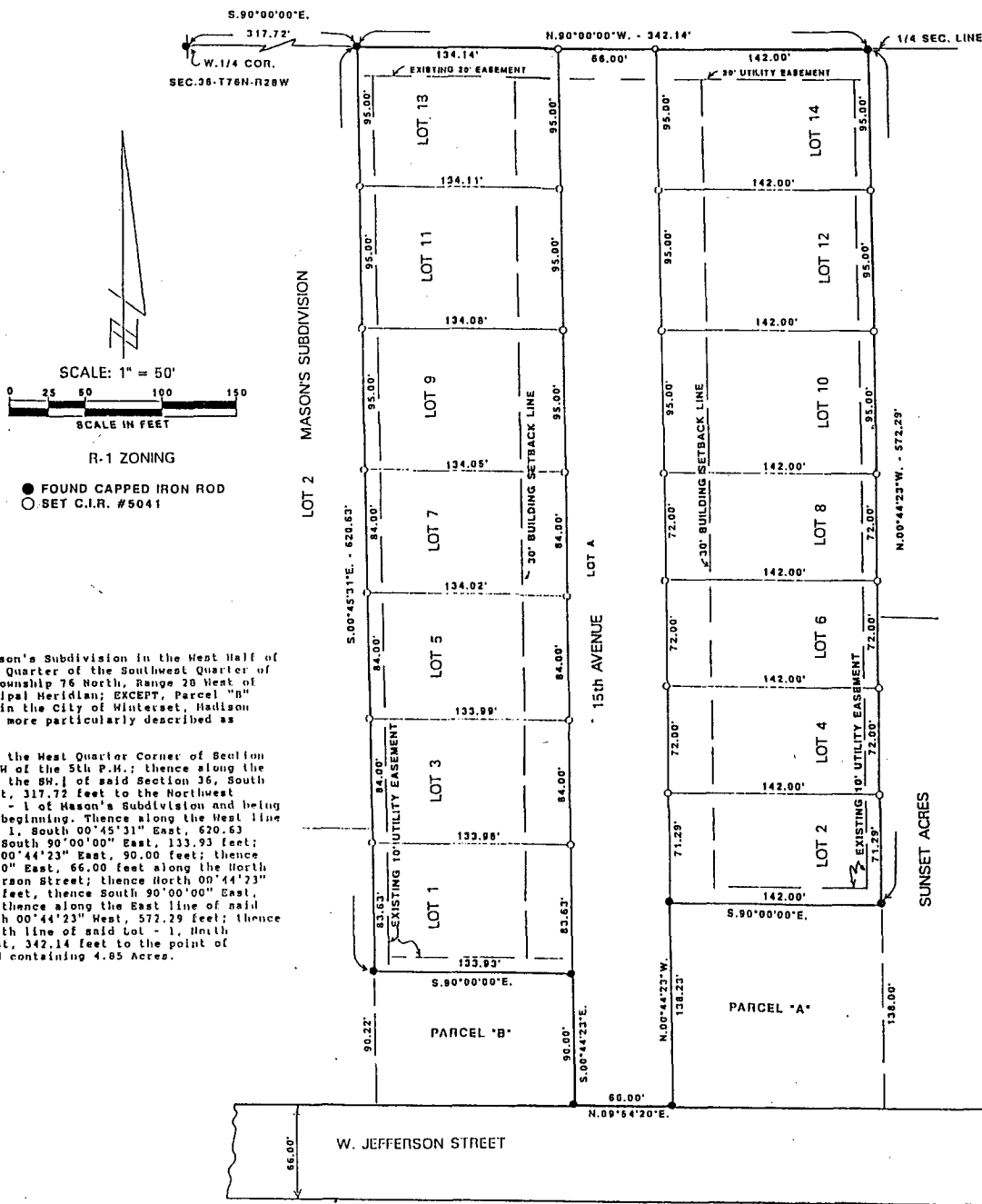
Replat Lots 9, 10,
11, 12, 13 & 14, see
2001-3853a

08-29-01

Amended Coves 2001-2008 & 2001-3216

VANCE & HOCHSTETLER, P.C., CONSULTING ENGINEERS, WINTERSET, IOWA (515) 462-3995
CHARLES T. VANCE, 110 WEST GREEN ST., WINTERSET, IOWA 50273
JAMES M HOCHSTETLER, 110 WEST GREEN ST., WINTERSET, IOWA 50273

FINAL PLAT OF
MAPLE LANE ESTATES
IN THE CITY OF WINTERSET, MADISON COUNTY, IOWA



R-1 ZONING

- FOUND CAPPED IRON ROD
- SET C.I.R. #5041

DESCRIPTION:

Lot - 1 of Mason's Subdivision in the West Half of the Northwest Quarter of the Southwest Quarter of Section 36, Township 76 North, Range 20 West of the 5th Principal Meridian; EXCEPT, Parcel "B" thereof, all in the City of Winterset, Madison County, Iowa, more particularly described as follows:

Commencing at the West Quarter Corner of Section 36, T76N, R20W of the 5th P.M.; thence along the North line of the SW 1/4 of said Section 36, South 90°00'00" East, 317.72 feet to the Northwest Corner of Lot - 1 of Mason's Subdivision and being the point of beginning; thence along the West line of said Lot - 1, South 00°45'31" East, 620.63 feet; thence South 90°00'00" East, 133.93 feet; thence South 00°44'23" East, 90.00 feet; thence North 09°54'20" East, 66.00 feet along the North line of Jefferson Street; thence North 00°44'23" West, 138.23 feet, thence South 90°00'00" East, 142.00 feet; thence along the East line of said Lot - 1, North 00°44'23" West, 572.29 feet; thence along the North line of said Lot - 1, North 90°00'00" West, 342.14 feet to the point of beginning and containing 4.85 Acres.



I hereby certify that this engineering or land surveying document was prepared and the related survey work was performed by me or under my direct personal supervision and that I am a duly licensed Professional Engineer and Land Surveyor under the laws of the State of Iowa.

Charles T. Vance 12 Aug. 1999
Charles T. Vance Date

License number 5041
My license renewal date is December 31, 1999

Pages or sheets covered by this seal: one

FINAL PLAT
MAPLE LANE ESTATES
OWNER-DEVELOPER: KENNETH L. & CAROL A. CONARD 811 W. COURT AVE. WINTERSET, IOWA 50273
VANCE & HOCHSTETLER, P.C. CONSULTING ENGINEERS 110 W. GREEN ST. WINTERSET, IOWA 50273