

REC \$ 5

AUD \$

R.M.F. \$ 81

FILED NO. 2500

BOOK 2 PAGE 384

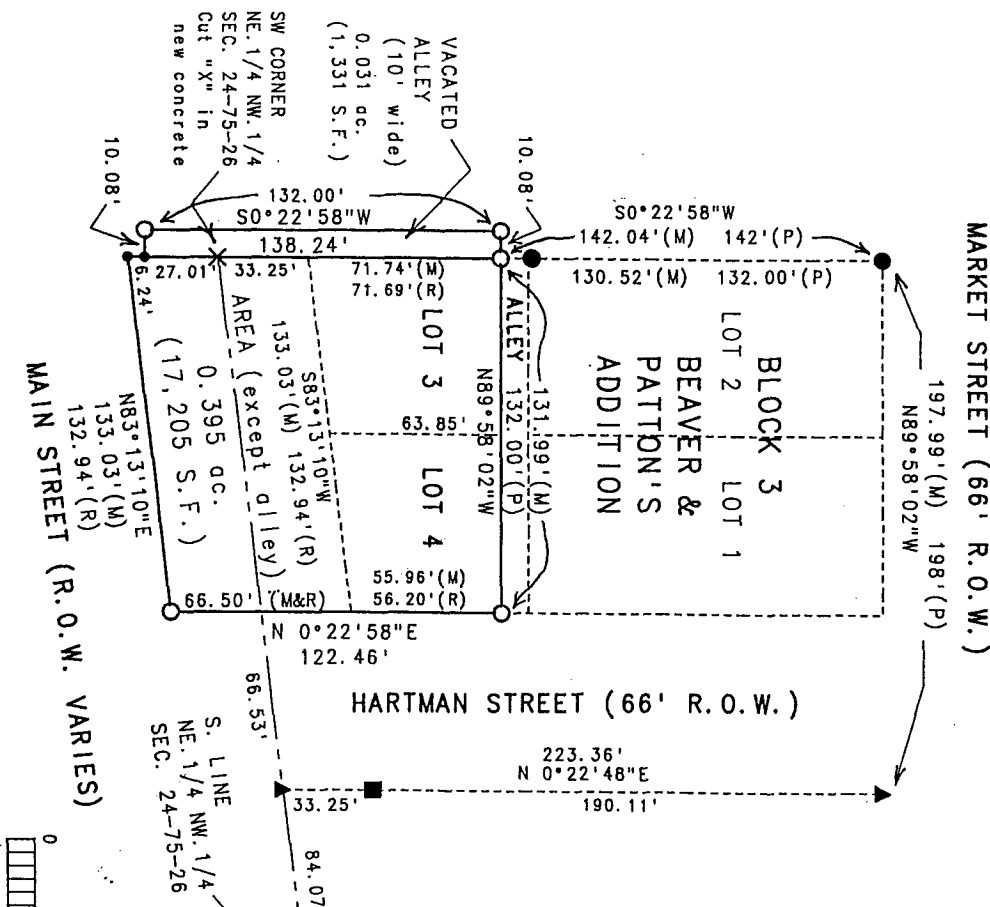
98 DEC 16 PM 3:20

MICHELLE UTSLER  
RECORDER  
MADISON COUNTY, IOWA

COMPUTER ✓  
RECORDED ✓  
COMPARED ✓

VANCE & HOCHSTETLER, P.C. CONSULTING ENGINEERS, WINTERSET, IOWA (515)462-3995  
CHARLES T. VANCE 110 WEST GREEN ST., WINTERSET, IOWA 50273  
JAMES M. HOCHSTETLER, 110 WEST GREEN ST., WINTERSET, IOWA 50273

A PLAT OF SURVEY FOR JOHN K. & BRENDA K. FICKES OF LOTS 3 & 4 OF BEAVER & PATTON'S ADDITION, AND PORTIONS OF VACATED STREETS AND ALLEYS LOCATED IN & FORMING A PART OF THE CITY OF ST. CHARLES, MADISON COUNTY, IOWA.

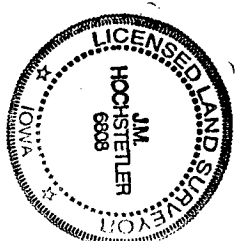


MARKET STREET (66' R.O.W.)

HARTMAN STREET (66' R.O.W.)

MAIN STREET (R.O.W. VARIES)

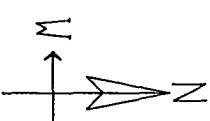
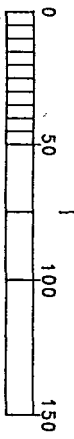
- LEGEND
- Fd. C.I.R. #6808
  - ▲ Fd. C.I.R. #5041
  - Fd. 5/8" Iron Pin
  - × Cut "X" in Concrete slab
  - Set C.I.R. #6808
  - No Monument Set (concrete slab)
  - (M) Measured Dimension
  - (R) Recorded Dimension
  - (P) Platted Dimension
  - Calc. Lot Line
  - Line



I hereby certify that this land surveying document was prepared and the actual survey work was performed by me or under my direct personal supervision and that I am a duly licensed Land Surveyor under the laws of the State of Iowa.

*J.M. Hochstetler*  
J.M. HOCHSTETLER  
License number 6808  
Date 12/14/98  
My license renewal date is December 31, 1999  
Pages or sheets covered by this scale: 1

DATE OF SURVEY:  
December 7, 1998  
SCALE: 1" = 50'



S. LINE  
NE 1/4 NW 1/4  
SEC. 24-75-26