

1356

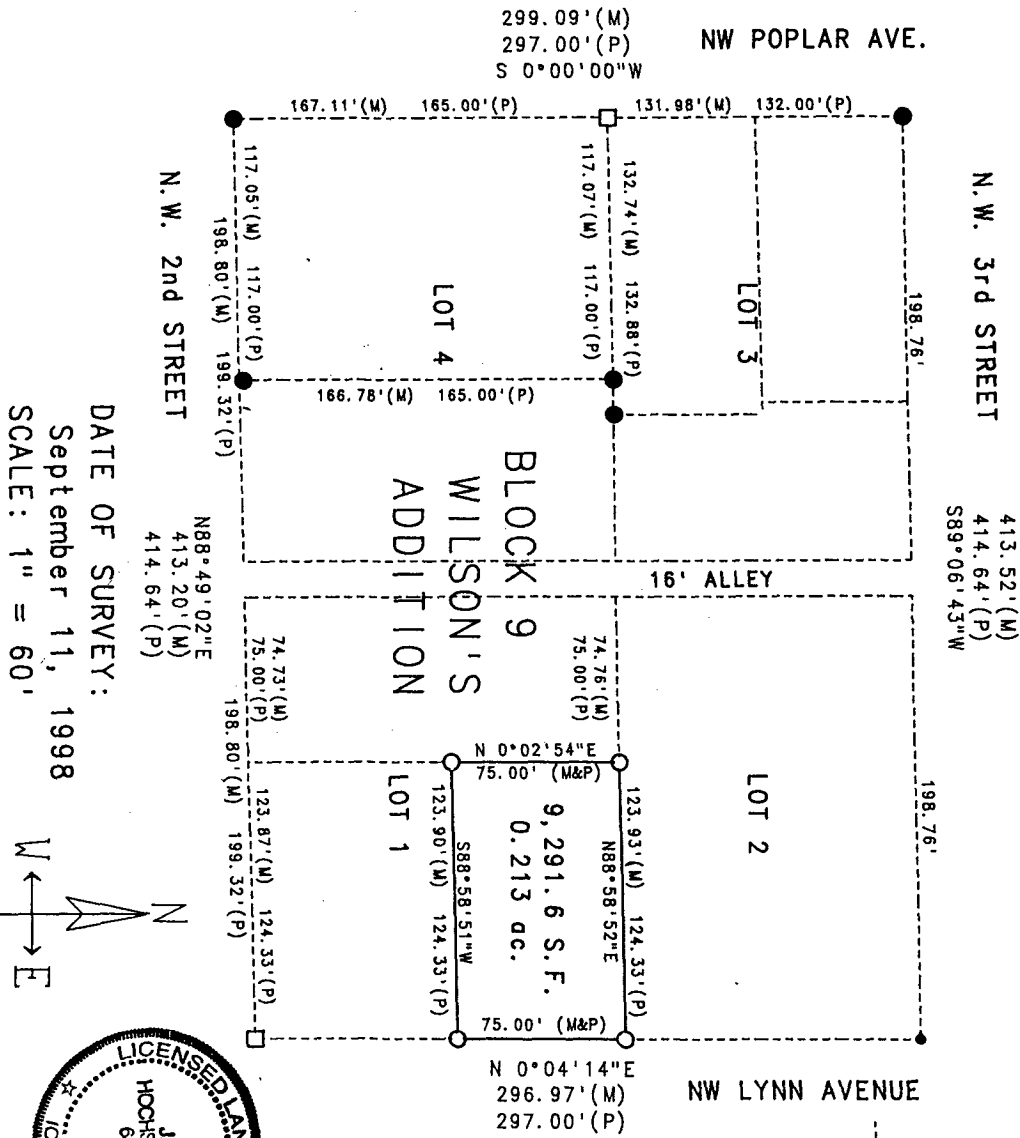
FILED NO. 2 BOOK PAGE 374

REC \$ 5.00
AUD \$
R.M.F. \$ 1.00

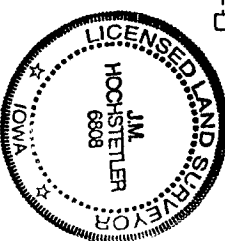
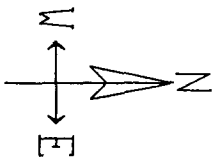
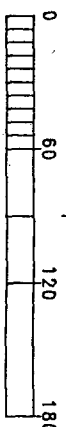
COMPUTER ✓ 98 SEP 25 AM 9:16
RECORDED ✓ MICHELLE UTSLER
COMPARED ✓ RECORDER
MADISON COUNTY, IOWA

VANCE & HOCHSTETLER, P.C. CONSULTING ENGINEERS, WINTERSSET, IOWA (515)462-3995
CHARLES T. VANCE 110 WEST GREEN ST., WINTERSSET, IOWA 50273
JAMES M. HOCHSTETLER, 110 WEST GREEN ST., WINTERSSET, IOWA 50273

A PLAT OF SURVEY FOR ANDREW ARNBURG OF THE NORTH 75 FEET OF THE EAST 124.33 FEET OF LOT 1, BLOCK 9 OF WILSON'S ADDITION TO THE CITY OF EARLHAM, MADISON COUNTY, IOWA.



DATE OF SURVEY:
September 11, 1998
SCALE: 1" = 60'



- LEGEND
- Fd. Nail
 - Fd. Iron Pin
 - Fd. C.I.R. #5041
 - Set C.I.R. #6808
 - Calc. Lot Line
 - Measured Dimension
 - Platted Dimension

I hereby certify that this land surveying document was prepared and the related survey work was performed by me or under my direct personal supervision and that I am a duly licensed Land Surveyor under the laws of the State of Iowa.

J.M. Hochstetler
J.M. HOCHSTETLER
License number 6808
My license renewal date is December 31, 1999.
Date 9/15/98
Pages or sheets covered by this scale: 1