

REC \$ 3.00
AUD \$
R.M.F. \$ 1.00

FILED NO. 5298
Town Plat
BOOK 2 PAGE 358

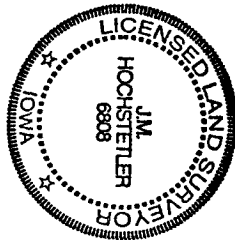
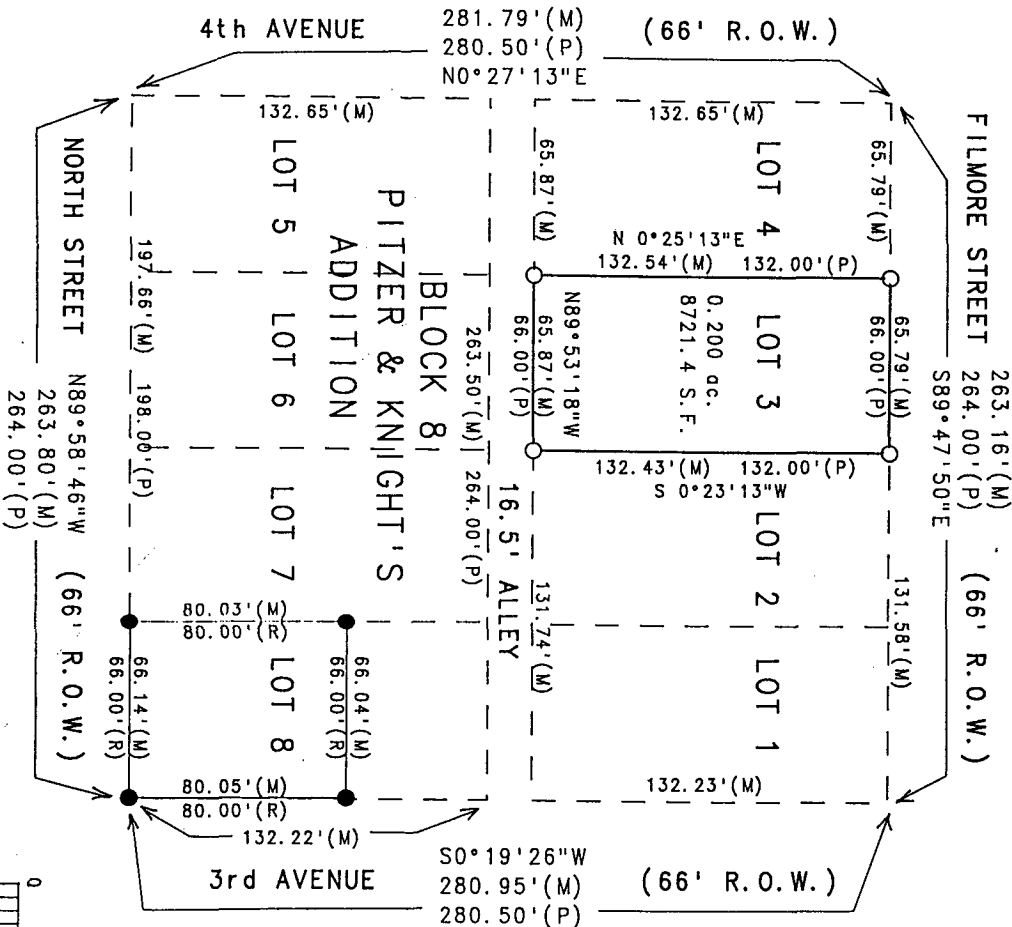
98 JUN 16 PM 3:29

COMPUTER ✓
RECORDED ✓
COMPARED ✓

MICHELLE UTSLER
RECORDER
MADISON COUNTY, IOWA

VANCE & HOCHSTETLER, P.C. CONSULTING ENGINEERS, WINTERSET, IOWA (515)462-3995
CHARLES T. VANCE 110 WEST GREEN ST., WINTERSET, IOWA 50273
JAMES M. HOCHSTETLER, 110 WEST GREEN ST., WINTERSET, IOWA 50273

A PLAT OF SURVEY FOR DAN & DONNA DREY OF LOT 3, BLOCK 8 OF
PITZER & KNIGHT'S ADDITION TO THE CITY OF WINTERSET, MADISON
COUNTY, IOWA.

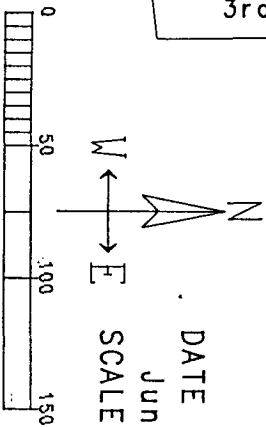


I hereby certify that this land surveying document was prepared and the related survey work was performed by me or under my direct personal supervision and that I am a duly Licensed Land Surveyor under the laws of the State of Iowa.

J.M. Hochstetler
J.M. HOCHSTETLER
License number 6808
Date 6/16/98
My license renewal date is December 31, 1999.
Pages or sheets covered by this seal: 1

LEGEND

● F.d. C.I.R. #5041
○ Set C.I.R. #6808
--- Calc. Lot Line
--- Measured Dimension
--- Recorded Dimension
--- Platted Dimension



DATE OF SURVEY:
June 9, 1998
SCALE: 1" = 50'