

98-341

REC \$ 5.00

FILED NO. 3541

AUD \$

BOOK 2 PAGE 345

R.M.F. \$ 1.00

98 MAR 19 AM 10:58

COMPUTER ✓

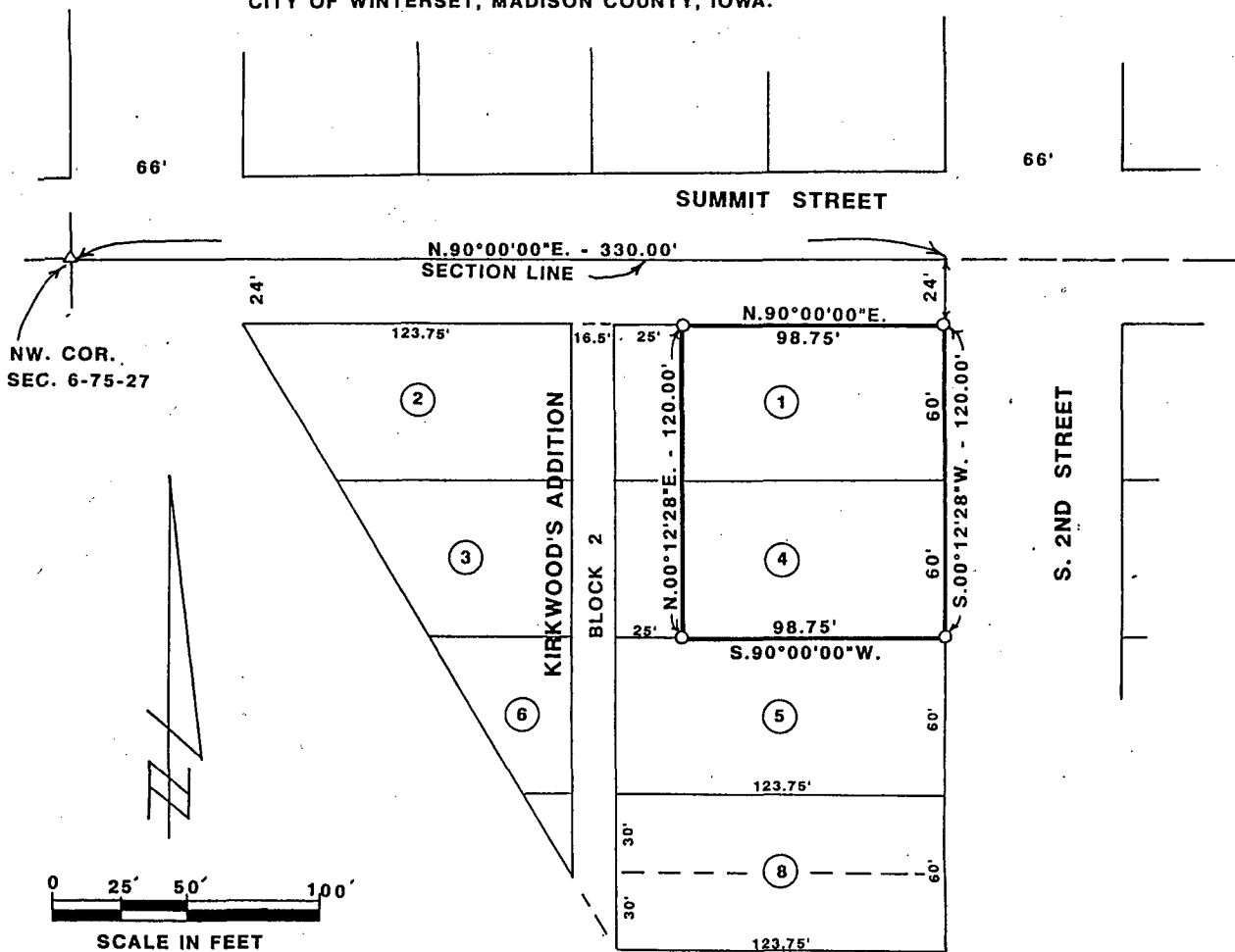
RECORDED ✓

COMPARED ✓

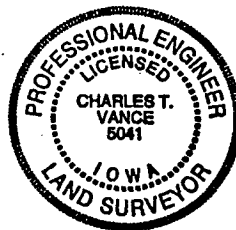
MICHELLE UTSLER
RECORDER
MADISON COUNTY, IOWA

VANCE & HOCHSTETLER, P.C., CONSULTING ENGINEERS, WINTERSET, IOWA (515) 462-3995
CHARLES T. VANCE, 110 WEST GREEN ST., WINTERSET, IOWA 50273
JAMES M HOCHSTETLER, 110 WEST GREEN ST., WINTERSET, IOWA 50273

PLAT OF SURVEY FOR BLAINE S. LOWDEN OF THE EAST 98.75 FEET
OF LOTS 1 AND 4 IN BLOCK 2 OF KIRKWOOD'S ADDITION TO THE
CITY OF WINTERSET, MADISON COUNTY, IOWA.



△ FOUND P.K. NAIL
○ SET C.I.R. # 5401
DATE OF SURVEY:
FEBRUARY 26 & 27, 1998



I hereby certify that this engineering or land surveying document was prepared and the related survey work was performed by me or under my direct personal supervision and that I am a duly licensed Professional Engineer and Land Surveyor under the laws of the State of Iowa.

Charles T. Vance 2 March 1998
Charles T. Vance Date

License number 5041
My license renewal date is December 31, 1999.

Pages or sheets covered by this seal: one