

FILED NO. 2768

BOOK 2 PAGE 335

98 JAN 29 PM 3:40

MICHELLE OTSLER  
RECORDER  
MADISON COUNTY, IOWA

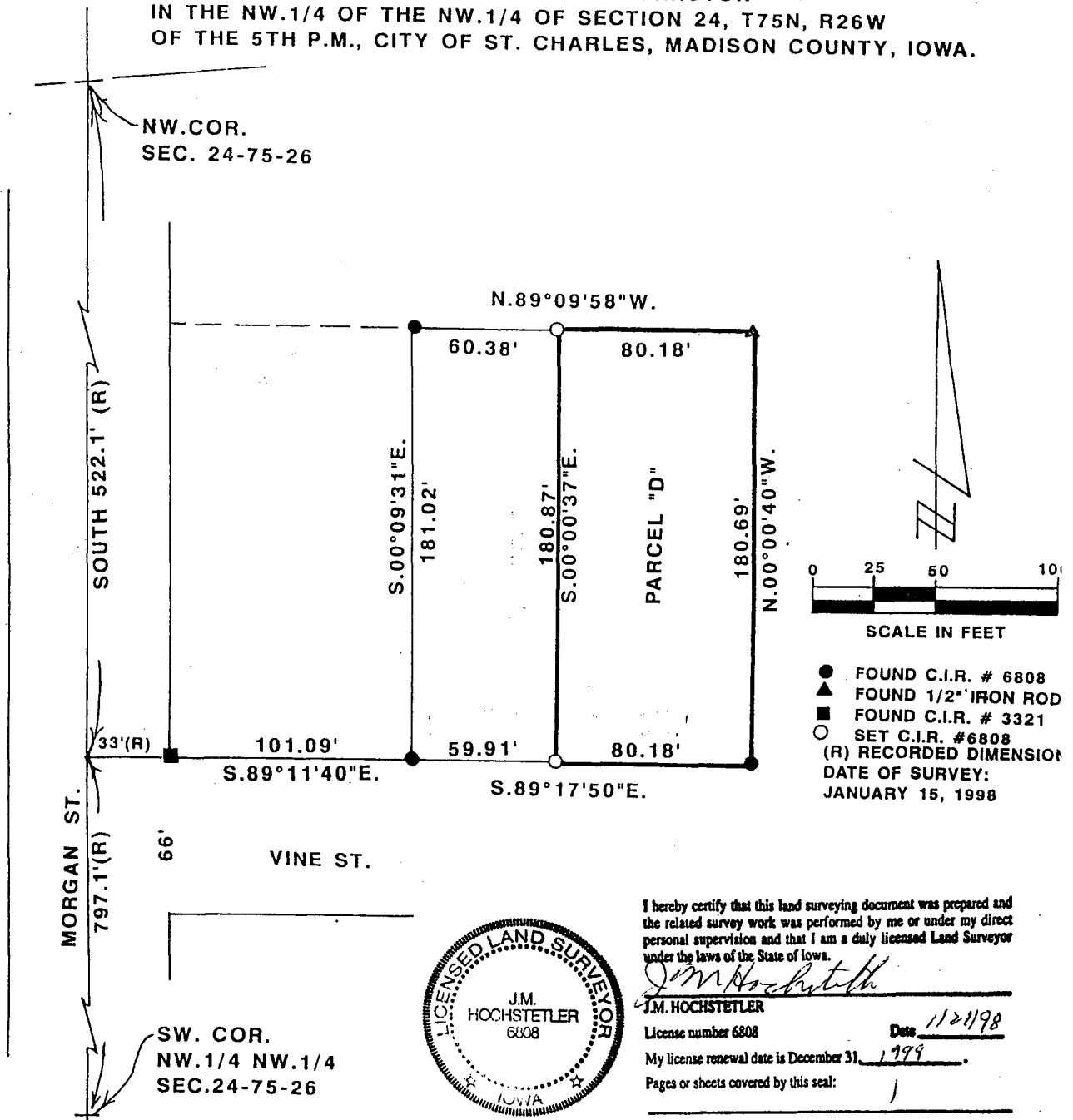
REC: 5<sup>00</sup>  
AUG:         
R.M.F. \$    

COMPUTER   
RECORDED   
COMPARED

VANCE & HOCHSTETLER, P.C. CONSULTING ENGINEERS, WINTERSSET, IOWA (515)462-3995

CHARLES T. VANCE, 110 WEST GREEN ST., WINTERSSET, IOWA 50273  
JAMES M. HOCHSTETLER, 110 WEST GREEN ST., WINTERSSET, IOWA 50273

PLAT OF SURVEY MADE FOR JOHNNIE JOHNSTON  
IN THE NW.1/4 OF THE NW.1/4 OF SECTION 24, T75N, R26W  
OF THE 5TH P.M., CITY OF ST. CHARLES, MADISON COUNTY, IOWA.



DESCRIPTION:

Parcel "D" in the Northwest Quarter of the Northwest Quarter of Section 24, Township 75 North, Range 26 West of the 5th Principal Meridian, City of St. Charles, Madison County, Iowa, more particularly described as follows:

Commencing at a point 522.1 feet South and 134.09 feet South 89°11'40" East of the Northwest Corner of Section 24, T75N, R26W of the 5th P.M.; thence South 89°17'50" East, 59.91 feet to the point of beginning. Thence continuing South 89°17'50" East, 80.18 feet; thence North 00°00'40" West, 180.69 feet; thence North 89°09'58" West, 80.18 feet; thence South 00°00'37" East, 180.87 feet to the point of beginning. Said Parcel "D" contains 14,493 square feet.

For Amended Survey see  
Town Plat 2-350  
4-20-98 & 2-349, 04-14-98