

FILED NO. **4112**

BOOK 2 PAGE 351

98 APR 23 PM 2:02

MICHELLE UTSLER
RECORDER
MADISON COUNTY, IOWA

REC \$ 5⁰⁰
AUD \$ 1⁰⁰
R.M.F. \$ 1⁰⁰

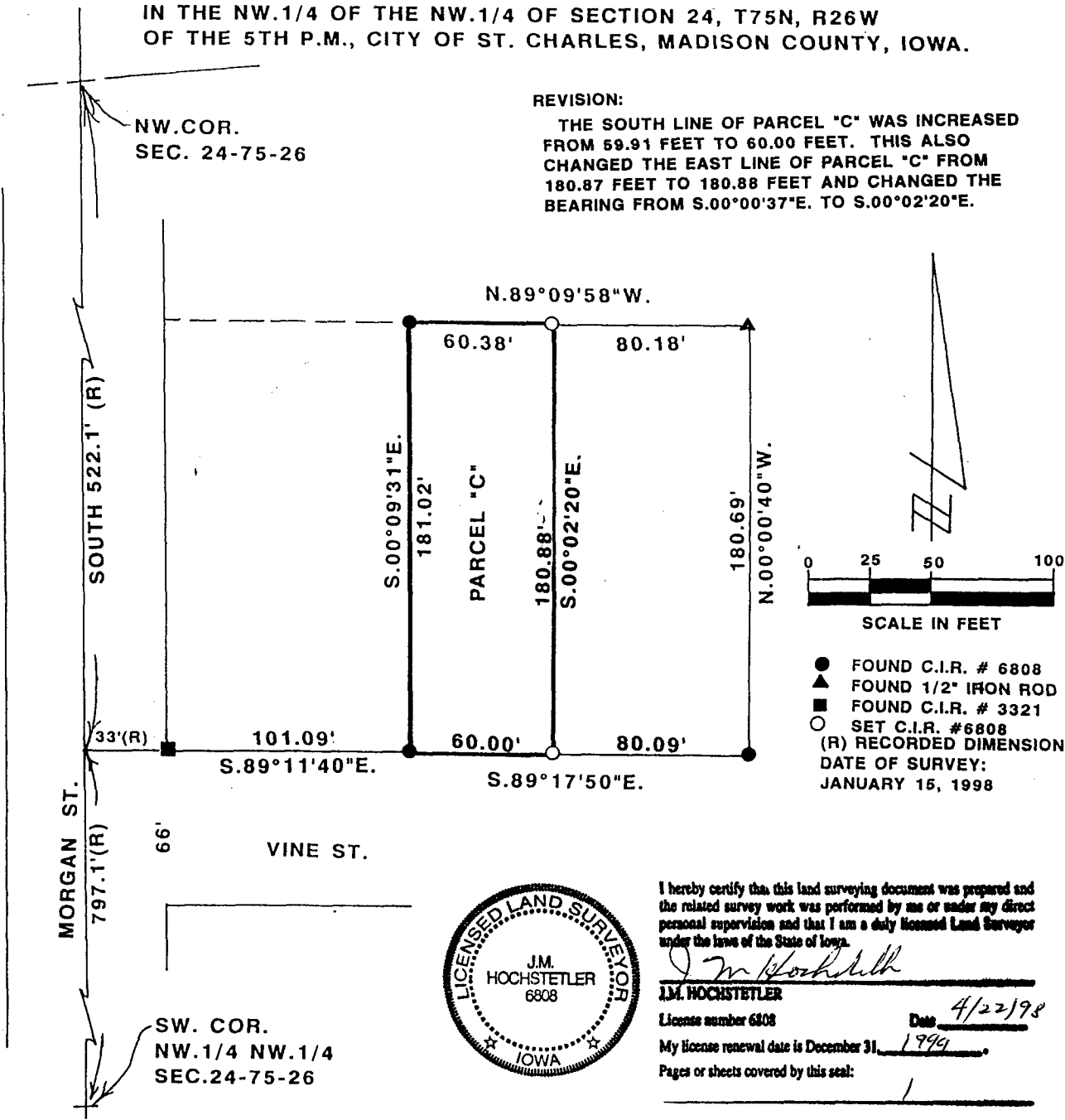
COMPUTER
RECORDED
COMPARED

VANCE & HOCHSTETLER, P.C. CONSULTING ENGINEERS, WINTERSSET, IOWA (515)462-3995

CHARLES T. VANCE, 110 WEST GREEN ST., WINTERSSET, IOWA 50273
JAMES M. HOCHSTETLER, 110 WEST GREEN ST., WINTERSSET, IOWA 50273

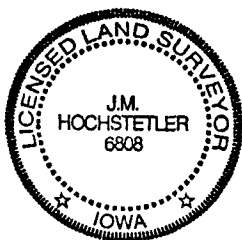
AMENDED PLAT OF SURVEY TO REPLACE A SURVEY FILED ON APRIL 14, 1998
IN BOOK 2 PAGE 349 AT THE MADISON COUNTY RECORDER'S OFFICE.

PLAT OF SURVEY MADE FOR JOHNNIE JOHNSTON
IN THE NW.1/4 OF THE NW.1/4 OF SECTION 24, T75N, R26W
OF THE 5TH P.M., CITY OF ST. CHARLES, MADISON COUNTY, IOWA.



I hereby certify that this land surveying document was prepared and the related survey work was performed by me or under my direct personal supervision and that I am a duly licensed Land Surveyor under the laws of the State of Iowa.

J.M. Hochstetler
J.M. HOCHSTETLER
License number 6808 Date 4/22/98
My license renewal date is December 31, 1999.
Pages or sheets covered by this seal: 1



DESCRIPTION:
Parcel "C" in the Northwest Quarter of the Northwest Quarter of Section 24, Township 75 North, Range 26 West of the 5th Principal Meridian, City of St. Charles, Madison County, Iowa more particularly described as follows:

Beginning at a point 522.1 feet South and 134.09 feet South 89°11'40" East of the Northwest Corner of Section 24, T75N, R26W of the 5th P.M.; thence South 89°17'50" East, 60.00 feet; thence North 00°00'37" West, 180.88 feet; thence North 89°09'58" West, 60.38 feet; thence South 00°09'31" East, 181.02 feet to the point of beginning. Said Parcel "C" contains 10,890 square feet.