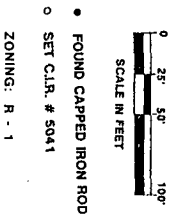
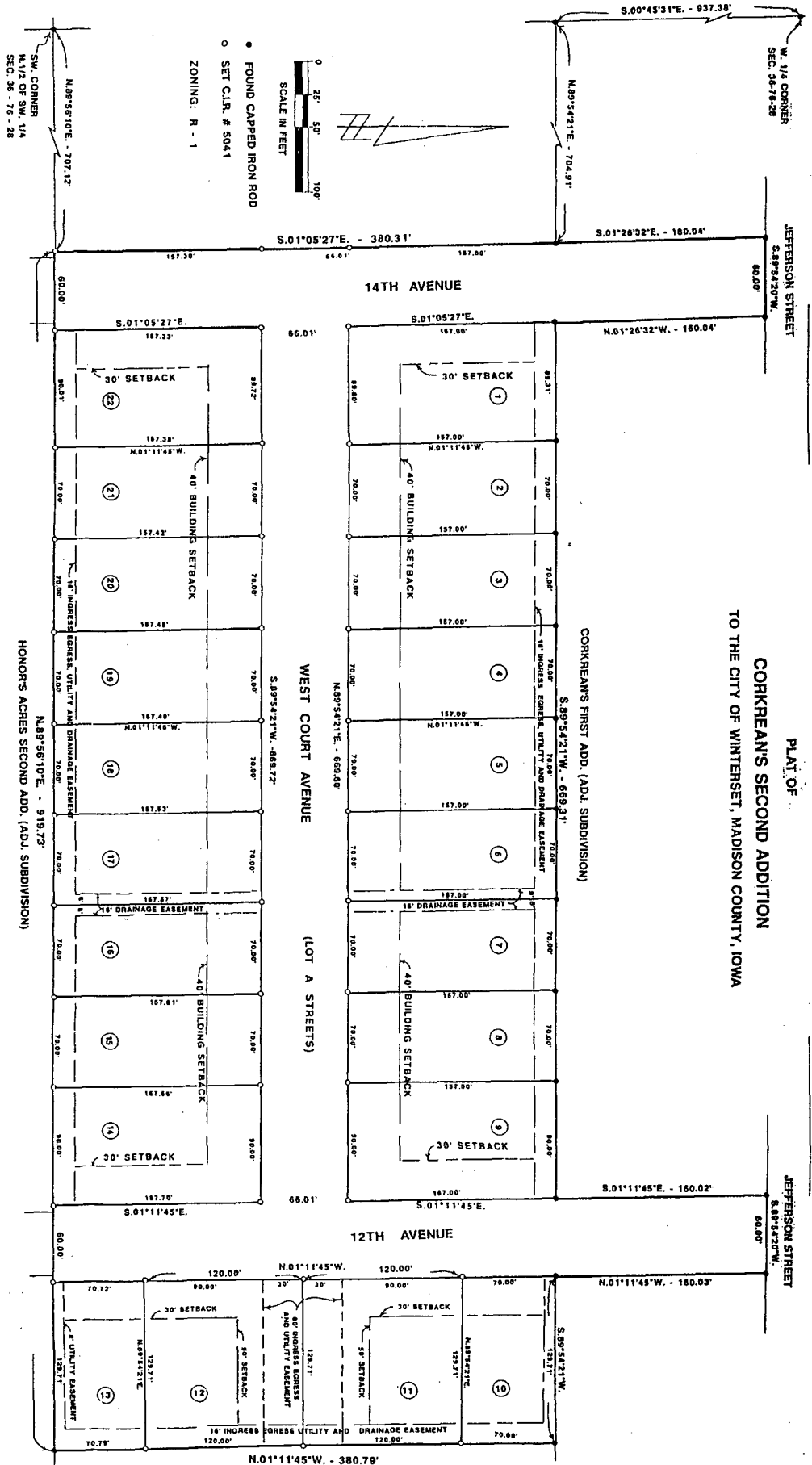


For Dedication, Resolution & Certificates - See Deed Record 61-783

FILED NO. 167-1
BOOK 2 PAGE 324
TOWN PLAT
97 JUL 14 AM 10:39

MICHELLE UTSLER
RECORDER
MADISON COUNTY, IOWA

VANCE & HOCHSTETLER, P.C. CONSULTING ENGINEERS, WINTERSET, IOWA (515) 462-3995
CHARLES T. VANCE, 110 WEST GREEN ST., WINTERSET, IOWA 50273
JAMES M. HOCHSTETLER, 110 WEST GREEN ST., WINTERSET, IOWA 50273



DESCRIPTION:

A parcel of land in the North Half (N. 1/2) of the Southwest Quarter (SW. 1/4) of Section 36, Township 76 North, Range 28 West of the 5th principal Meridian, City of kindred containing the East Quarter Parcel (E. 1/4) of said Section 36, 828.89 of the 5th P.M. - Madison County, Iowa; thence, along the West line of said Section 36, South 00°45'31" East, 937.38 feet; thence North 89°54'21" East, 704.91 feet along the South line of Corkrean's First Addition, to the point of beginning; thence South 01°05'27" East, 380.31 feet to the North line of Honor's Acres Second Addition; thence, along said North line, North 99°56'10" East, 919.73 feet; thence North 01°11'45" West, 895.42 feet to a point on the boundary of Corkrean's First Addition; thence South 03°05'42" West, 71.71 feet along said boundary; thence North 89°54'21" East, 160.02 feet; thence South 89°54'20" West, 60.00 feet along the South line of Jefferson Street; thence South 01°11'45" East, 160.02 feet; thence South 89°54'20" West, 160.04 feet; thence South 89°54'20" West, 60.00 feet along the South line of Jefferson Street; thence South 01°26'32" East, 160.04 feet to the point of beginning. Said parcel of land contains 8.471 Acres.

NOTE: The North line of the SW. 1/4 of Section 36, T76N, R28W is assumed to bear due East and West.



I hereby certify that this plat conforms to the requirements of said Statute and that the same is a true and correct copy of the original plat as shown to me by the owner or his duly authorized agent. My commission expires on December 31, 1997.

FINAL PLAT

CORKREAN'S SECOND ADDITION

OWNER-DEVELOPER:
PATRICK F. CORKREAN
719 N. 8TH AVENUE
WINTERSET, IOWA 50273

VANCE & HOCHSTETLER, P.C.
CONSULTING ENGINEERS
110 WEST GREEN STREET
WINTERSET, IOWA 50273